

APPLICATION MAP FOR PERMIT TO ENLARGE A RESERVOIR

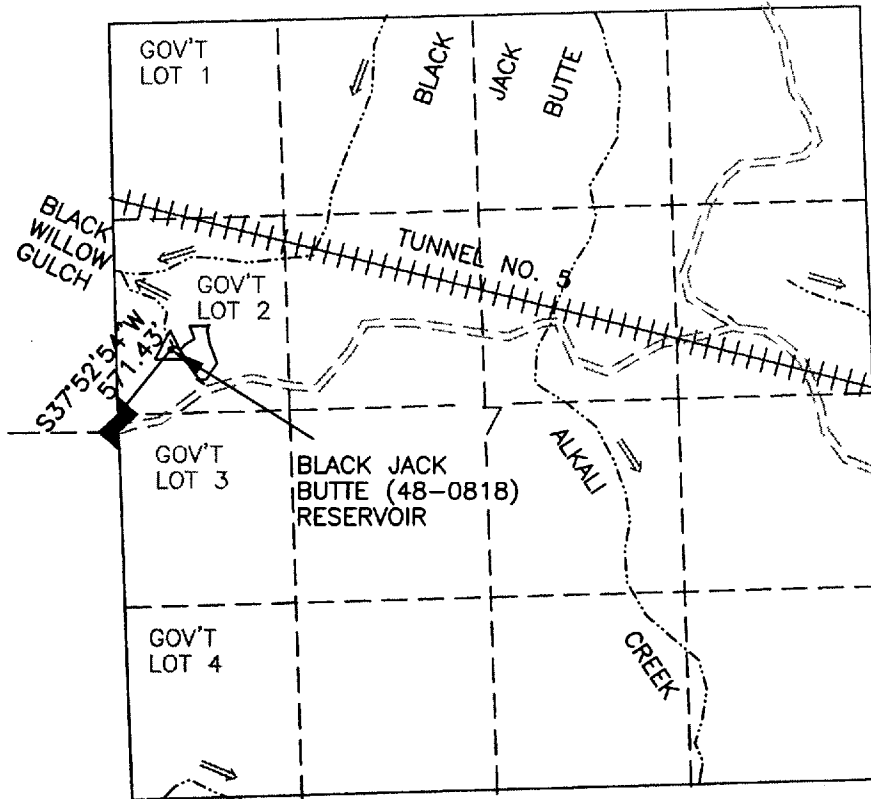
GOV'T LOT 2 SEC 7 T 22S R 46E W.M.

U.S.G.S. QUAD - OWYHEE DAM, OREG. - 7 1/2'

RECEIVED

DEC 09 2002

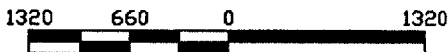
WATER RESOURCES DEPT.
SALEM, OREGON



- LEGEND**
- RESERVOIR
 - ROAD
 - CHANNEL
 - FD SEC COR
 - TUNNEL
 - PROJECT MON.

BLACK JACK BUTTE (48-0818) RESERVOIR

app# R-85397
Permit # R-13575



SCALE 1"=1320'

THIS MAP IS FOR THE PURPOSE OF LOCATING
A WATER RIGHT AND IS NOT INTENDED TO
PROVIDE LEGAL DIMENSIONS FOR LOCATION
OF PROPERTY BOUNDARIES.



UNITED STATES DEPARTMENT OF THE INTERIOR
BUREAU OF LAND MANAGEMENT
DIVISION OF OPERATIONS VALE DISTRICT

BLACK JACK BUTTE (48-0818) RESERVOIR

DESIGNED _____
REVIEWED *John R. Hill*
APPROVED *Thomas Stearns*
CHIEF, BRANCH OF ENGINEERING

DRAWN: CG SCALE: 1"=1320'
DATE: 11/06/02 SHEET 1 OF 1

DRAWING NO. OR-03-9172.45-1156

ACAD2000
DWG FILE: BLACKJACK.DWG