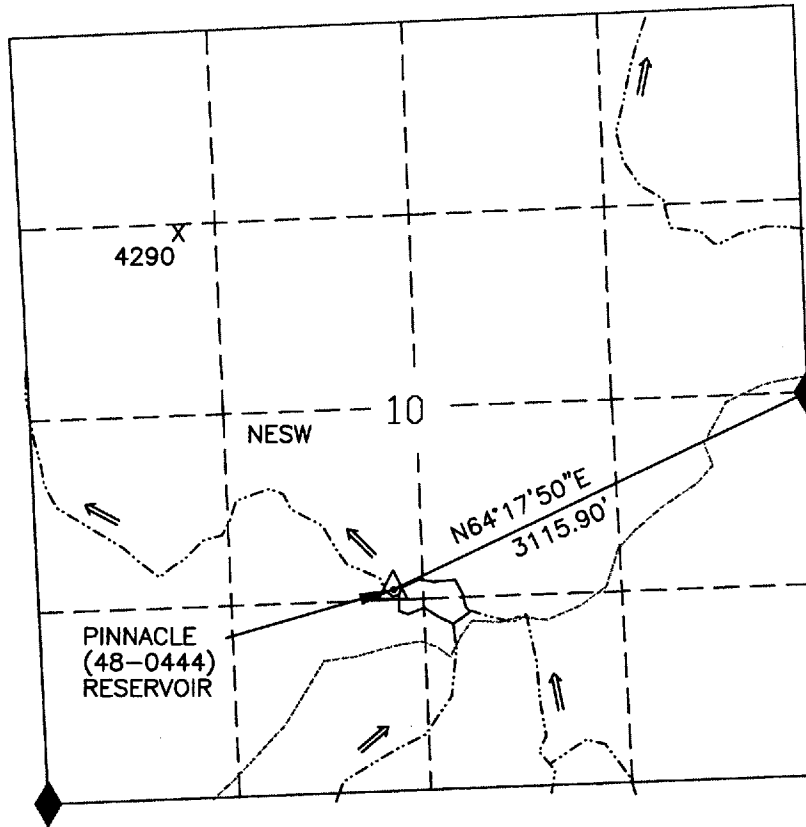


APPLICATION MAP FOR PERMIT TO ENLARGE A RESERVOIR

NE1/4 SW1/4 SEC 10 T 25S R 45E W.M.

U.S.G.S. QUAD - THREE FINGERS ROCK OREG. - 7 1/2'



LEGEND

- RESERVOIR
- JEEP TRAIL
- CHANNEL
- FD SEC COR
- PROJECT MON. ELEVATION

PINNACLE (48-0444) RESERVOIR

RECEIVED

DEC 06 2002

WATER RESOURCES DEPT.
SALEM, OREGON

app # R-85407
Permit # R-13584



SCALE 1"=1320'

THIS MAP IS FOR THE PURPOSE OF LOCATING
A WATER RIGHT AND IS NOT INTENDED TO
PROVIDE LEGAL DIMENSIONS FOR LOCATION
OF PROPERTY BOUNDARIES.



ACAD2000
DWG FILE: PINNACLE.DWG

UNITED STATES DEPARTMENT OF THE INTERIOR BUREAU OF LAND MANAGEMENT DIVISION OF OPERATIONS VALE DISTRICT	
PINNACLE (48-0444) RESERVOIR	
DESIGNED	
REVIEWED	<i>Long R. Hall</i>
APPROVED	<i>Thom J. Terry</i> CHIEF, BRANCH OF ENGINEERING
DRAWN: CG	SCALE: 1"=1320'
DATE: 11/12/02	SHEET 1 OF 1
DRAWING NO. DR-03-9172.45-1162	