

M.

MAY 03 2004 37s 6w 17

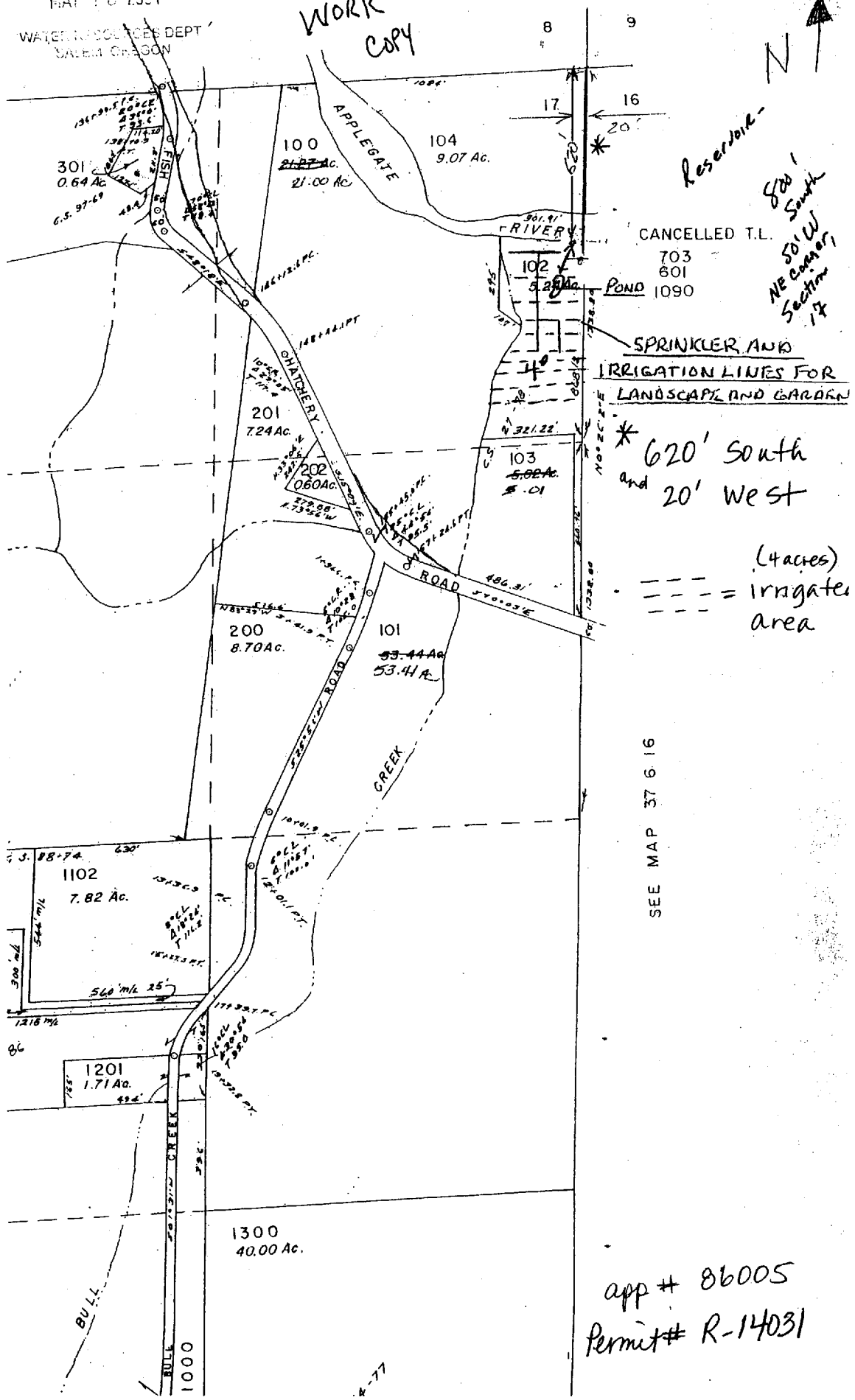
RECEIVED SCALE 1" = 400'

WATER RESOURCES DEPT SALEM, OREGON

MAY 13 2004

WATER RESOURCES DEPT SALEM, OREGON

WORK COPY



CANCELLED T.L. 703 601 1090

SPRINKLER AND IRRIGATION LINES FOR LANDSCAPE AND GARDEN

* 620' South and 20' West

(4 acres) irrigated area

SEE MAP 37 6 16

app # 86005 Permit # R-14031

4-77