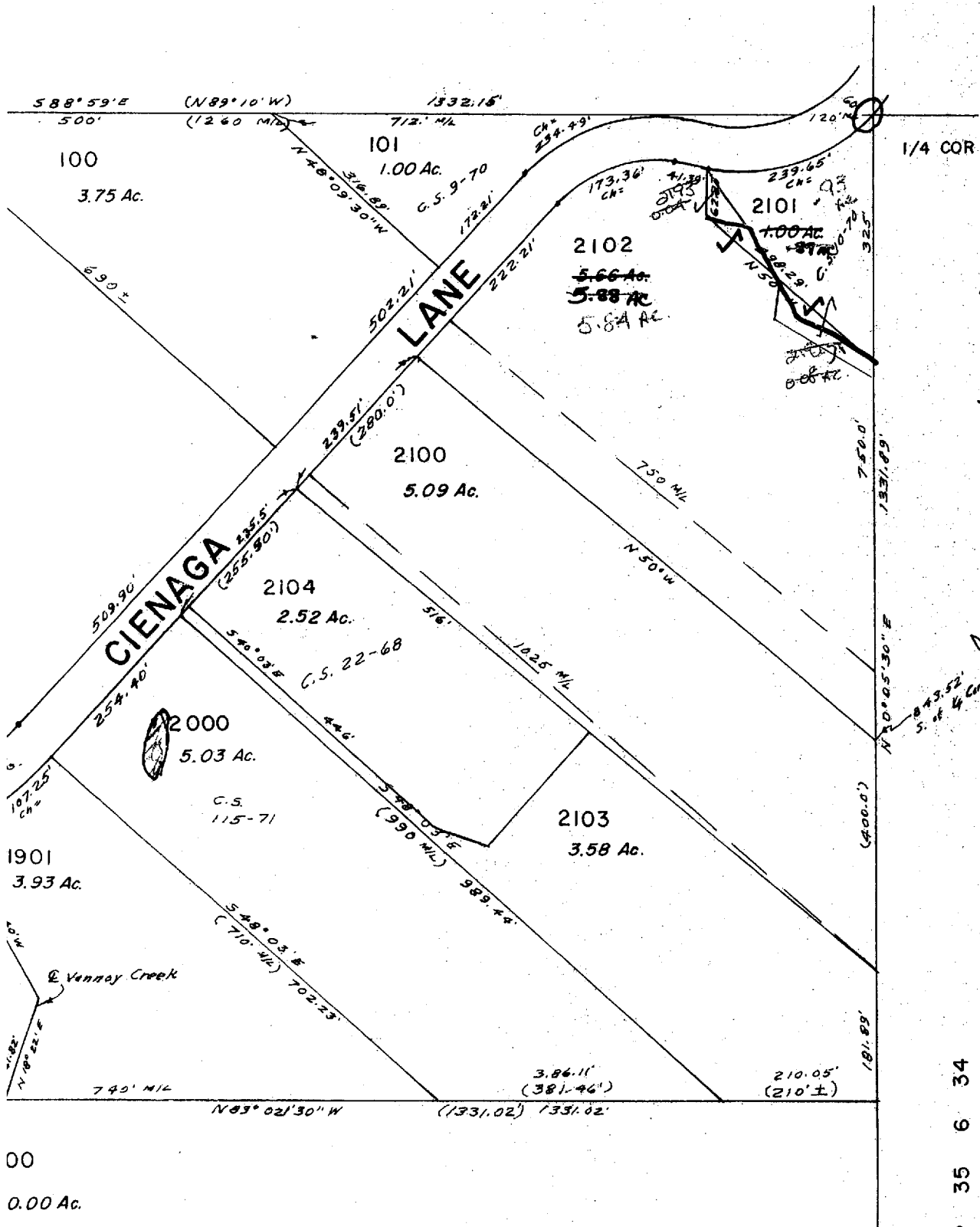


SCALE
1" = 200'

RECEIVED
MAY 10 2004
WATER RESOURCES DEPT
SALEM, OREGON

N ↑

33



RESERVOIR LOCATED
FROM E 1/4 CORNER SECTION 33
860 FEET SOUTH
975 FEET WEST

REVIEWED MAP
WITH DEWIS
GETZ
BY PHOENIX
AT MOUNTAIN

00
0.00 Ac.

35 6 34