



U.S. Fish & Wildlife Service
William L. Finley National Wildlife Refuge
 Benton County, Oregon

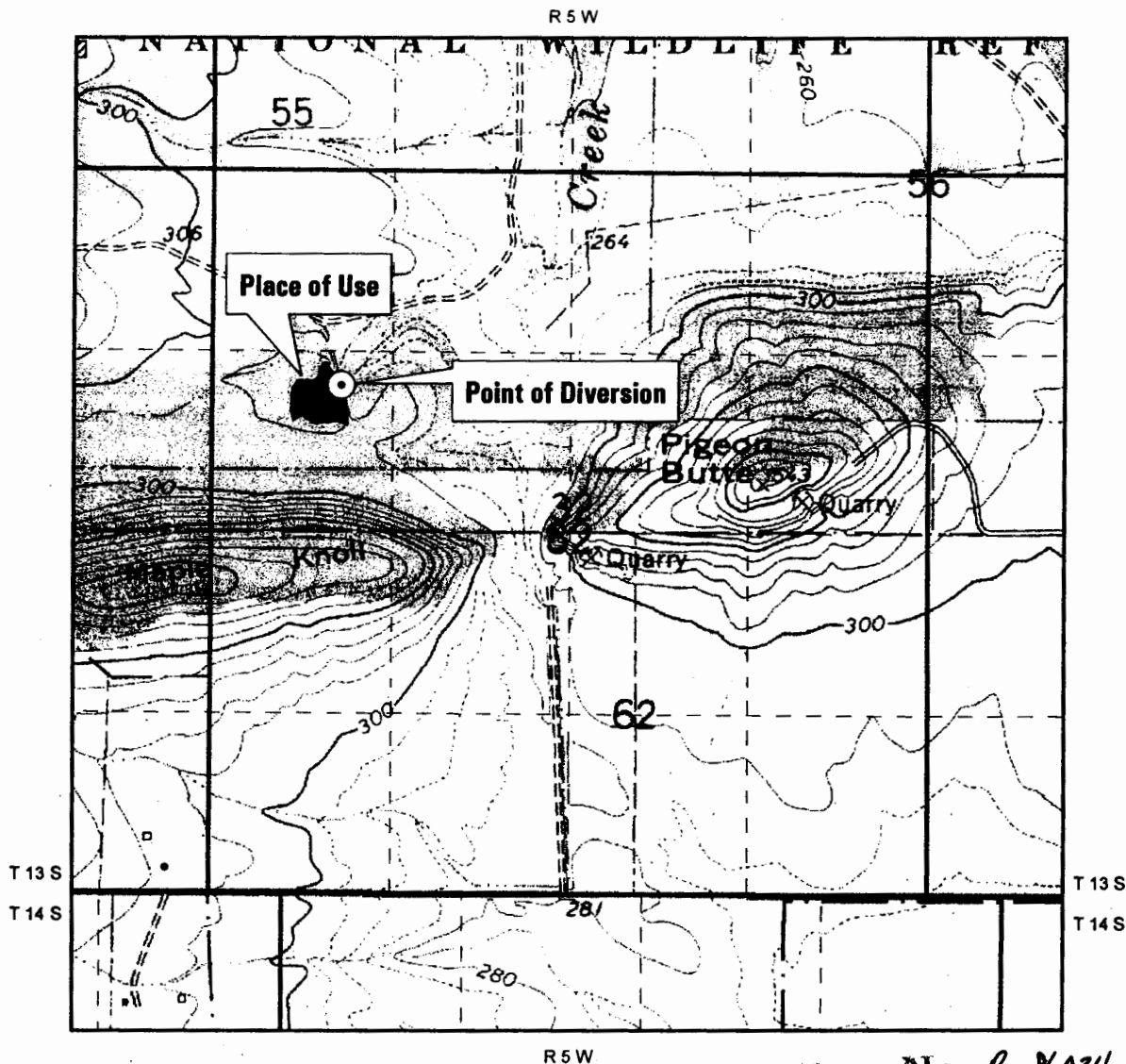
RECEIVED

JUN 07 2004

Application Map for Beaver Pond

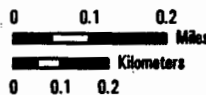
WATER RESOURCES DEPT
 SALEM, OREGON

Place of Use: SW 1/4 NW 1/4 Section 32, T13S, R5W, W.M. as projected in DLC 55.
 Point of Diversion: South 1540 feet, East 940 feet from NW corner of Section 32, T13S, R5W, W.M.,
 being within the SW 1/4 NW 1/4 of Section 32 as projected in DLC 55.



Application No. R 26034
 Permit No. R 14065

THE PURPOSE OF THIS MAP IS TO IDENTIFY THE LOCATION OF THE WATER RIGHT. IT IS NOT INTENDED TO PROVIDE INFORMATION RELATIVE TO THE LOCATION OF PROPERTY OWNERSHIP BOUNDARY LINES.



Water Resources Branch
 R1 Division of Engineering
 911 NE 11th Avenue
 Portland, OR 97232-4191
 KOR-2R1-R251

