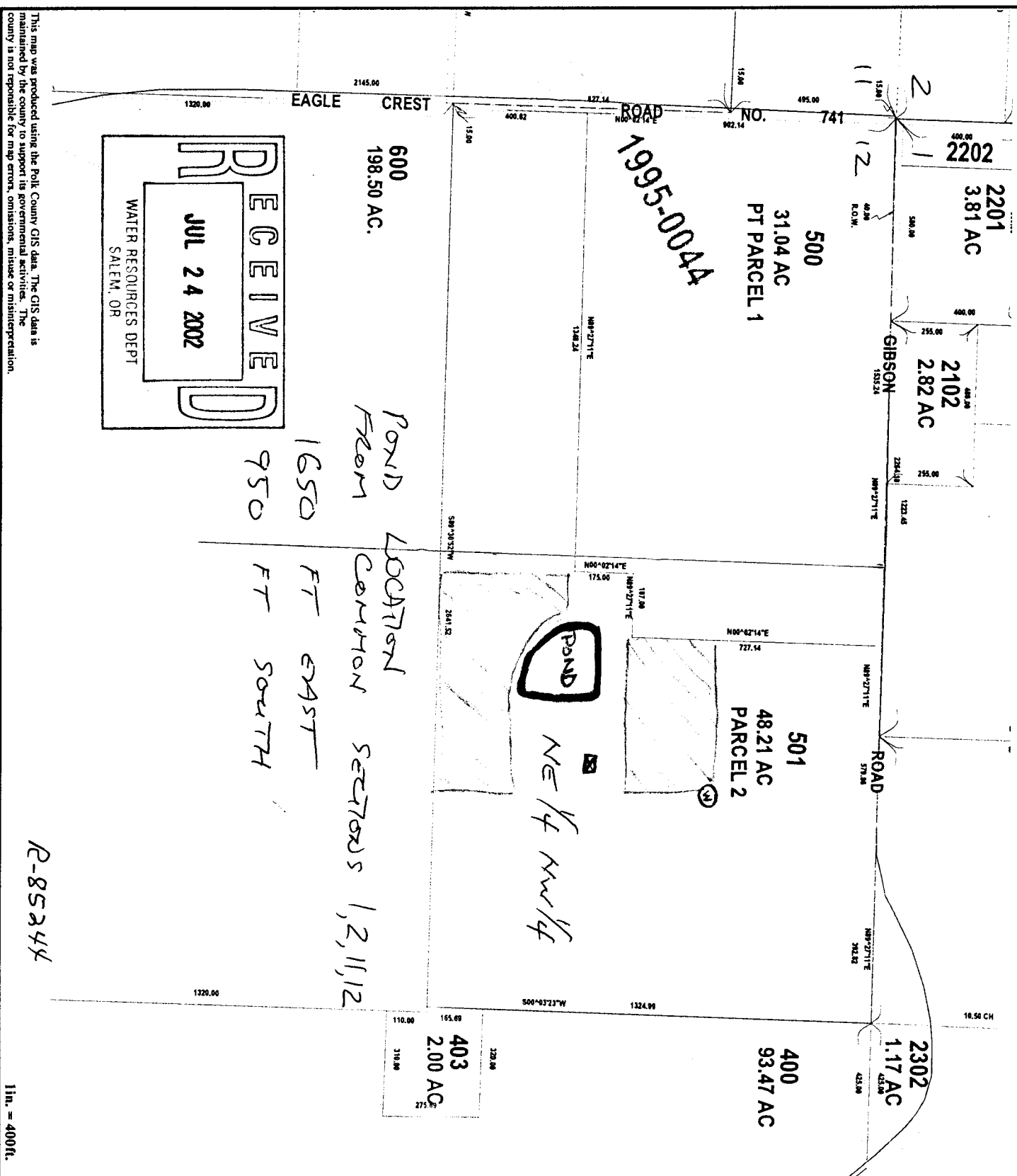


7 S 4 W SECTION 12



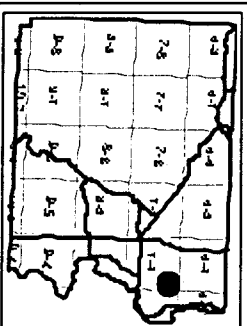
This map was produced using the Polk County GIS data. The GIS data is maintained by the county to support its governmental activities. The county is not responsible for map errors, omissions, misuse or misinterpretation.

Polk County Map

Community Development

- Roads
- OTHER
- CO-GRAVEL
- STATEWAY
- CO-PAVED
- Section
- Taxlot
- Taxlot Arrows
- Taxlot Boundary
- TaxMap
- TaxMap Line
- TaxMap Sub Line
- TaxMap/Par

- well
- pond
- drip irrigation
- site for future orchards that may need drip irrigation to get plants started.
- barn to water animals



7/23/2002
POLK COUNTY

1 in. = 400 ft.