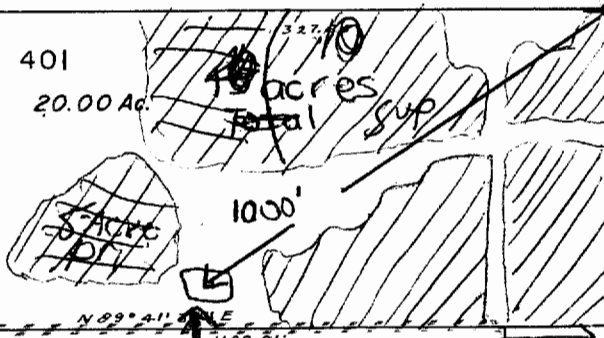
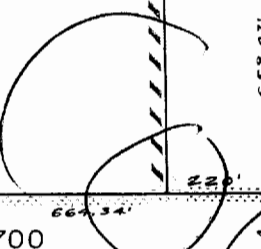


Diversion Point
 for Primary Right
 10 Acre

Prop
 Secondary
 5 acre Proposed
 150'
 Spring
 water
 run-off



PARTITION pond
 SEE SURV. BY U.R. WHITE
 FAT HORSE-HEAD LINE
 CORP. 1947



Basin 15 Rogue / Powell Cr

appno R. B. STOR
 309°43'W
 79.30 ch (GLD)

SEE MAP 38 5 22

1" = 400' scale