

# Polk County Map

app no. R-86059  
Permit no.

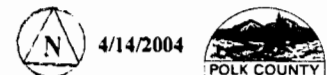
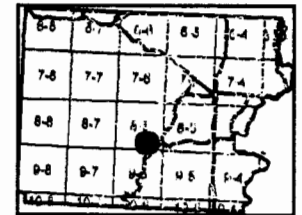
## Community Development

- Roads**
- OTHER
  - CO-GRAVL
  - STATEHWY
  - CO-PAVED
- Section**
- 1
  - 5
- Taxlot**
- Taxlot Arrows
  - Taxlot Boundary

*The Dams form  
the North Edge  
of Both Ponds*

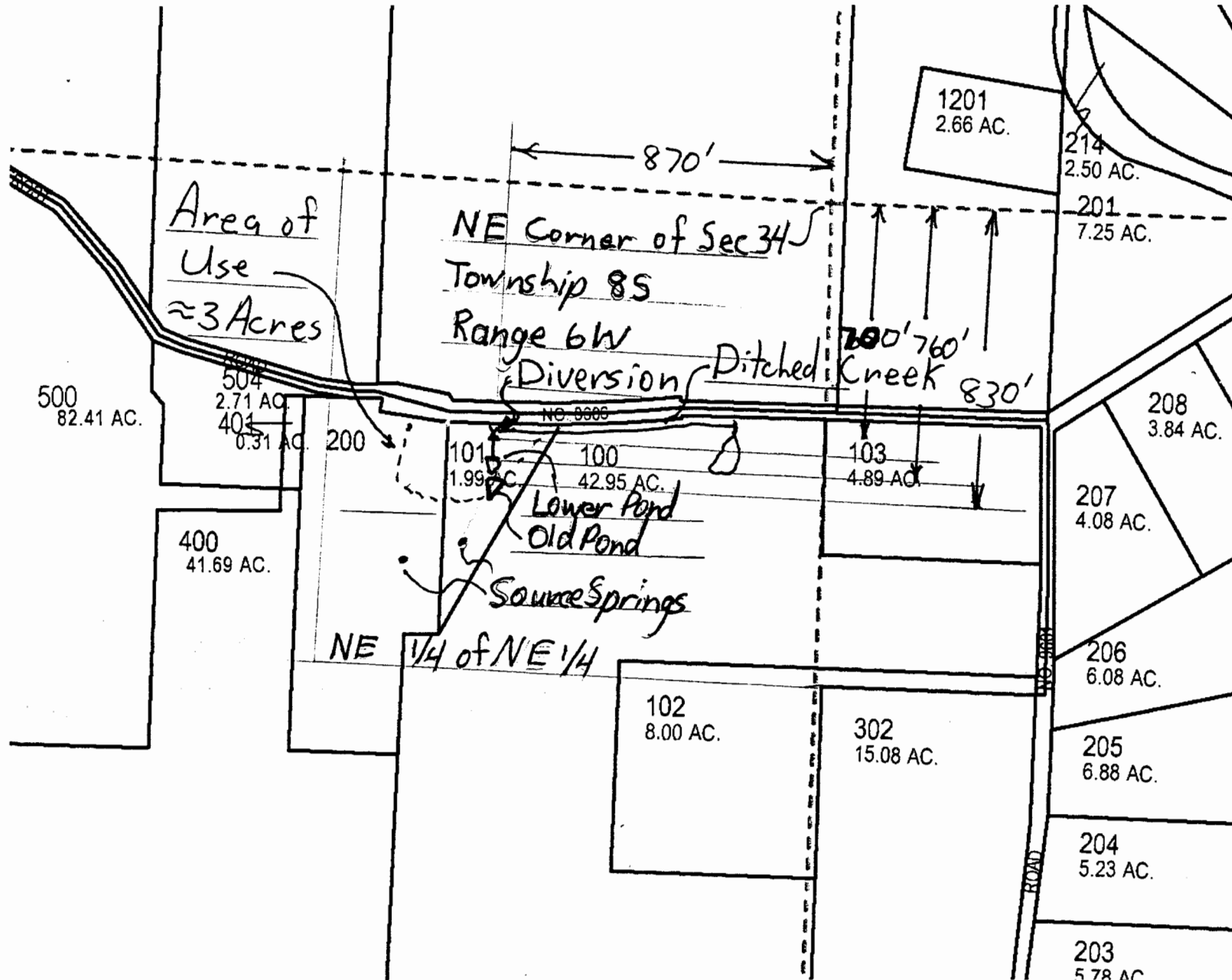
**RECEIVED**

JUL 22 2004  
WATER RESOURCES DEPT  
SALEM, OREGON



4/14/2004

POLK COUNTY



This map was produced using the Polk County GIS data. The GIS data is maintained by the county to support its governmental activities. The county is not responsible for map errors, omissions, misuse or misinterpretation.

1 in. = 400 ft.