

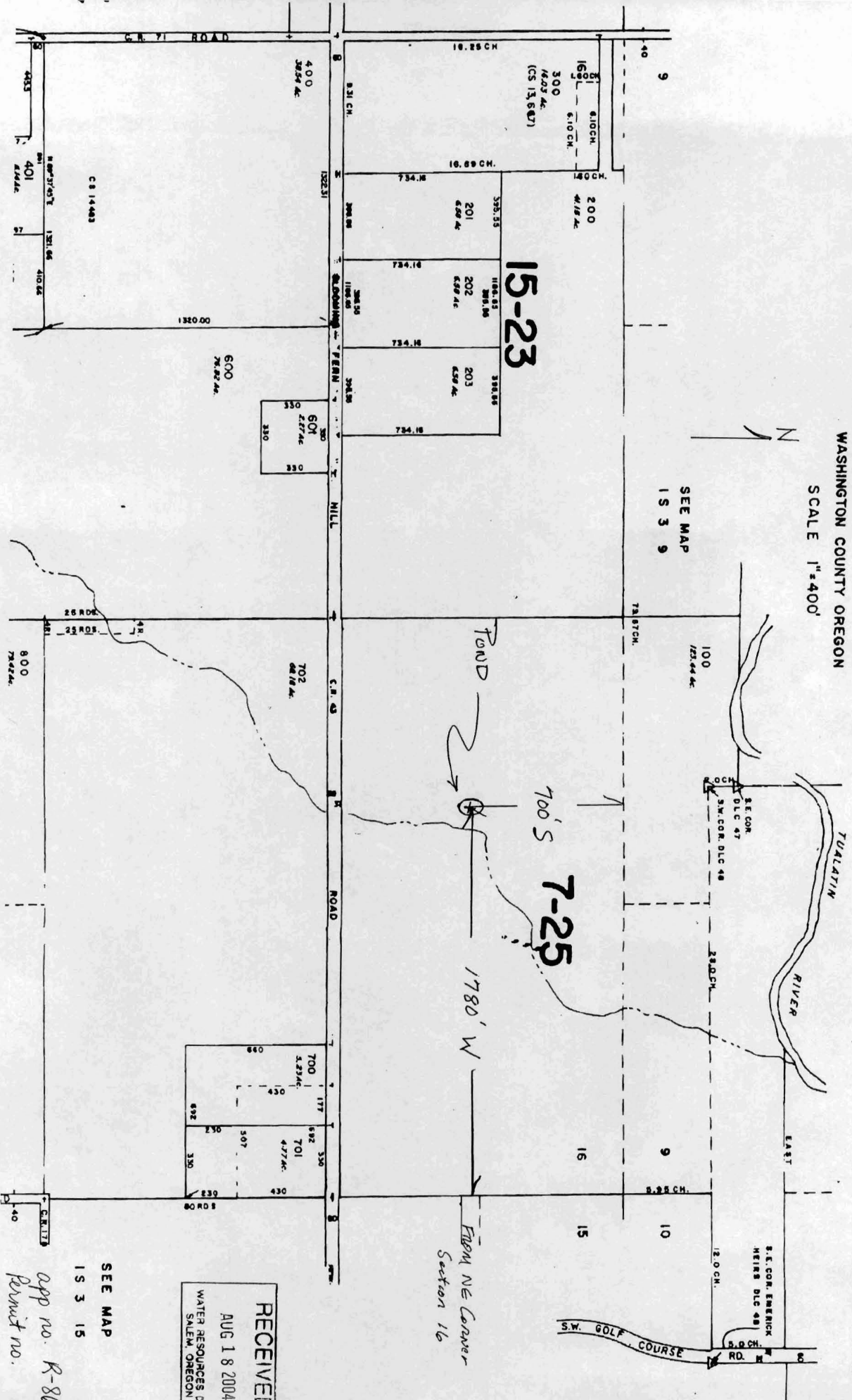
Grace Dinsdale WRP
Washington Co, Oregon

SECTION 16 T1S R3W W.M.

WASHINGTON COUNTY OREGON

SCALE 1"=400'

Updated Map
8-16-2004
15 3 16



15-23

700'S 7-25

1780' W

FIRM NE Corner
Section 16

RECEIVED
AUG 18 2004
WATER RESOURCES DEPT
SALEM, OREGON

SEE MAP
15 3 15

app no. R-86073
Permit no.