

App R 85875 - R 85882

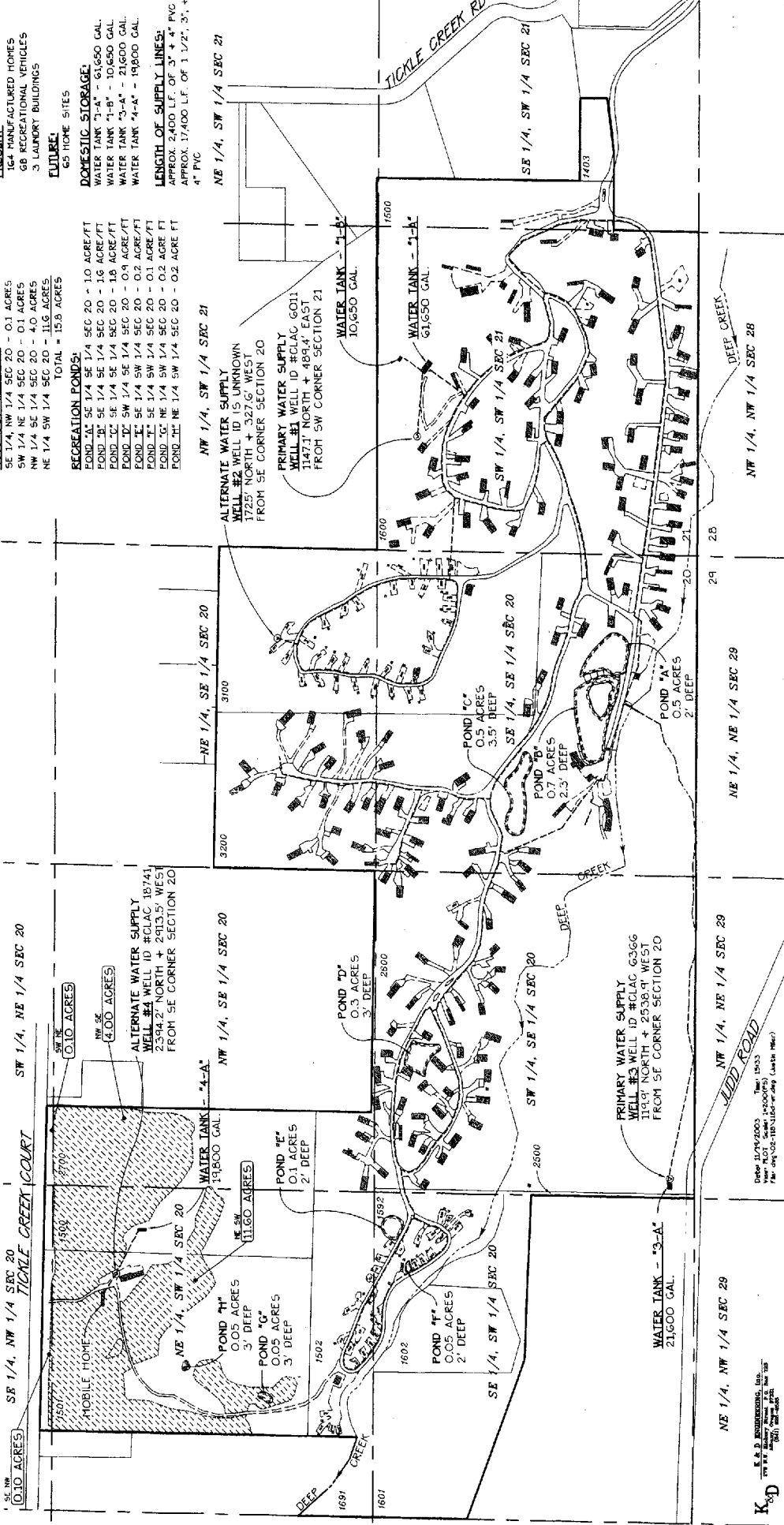
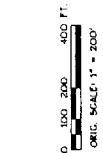
GROUND WATER APPLICATION MAP

IN NAME OF
BIG VALLEY WOODS WATER CORPORATION
LOCATED IN SECTIONS 20 + 21, T. 2 S.,
R. 4 E., W.M., CLACKAMAS COUNTY, OREGON

NOVEMBER 19, 2003

LEGEND

- WATER SUPPLY + DISTRIBUTION LINES
- █ MANUFACTURED HOMES
- ▒ RECREATIONAL VEHICLES
- WELL
- ▨ AREA TO BE IRRIGATED



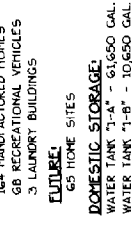
IRRIGATION OF LAWNS
AROUND RESIDENCES - UP TO 52.2 ACRES

IRRIGATION OF 9 HOLE GOLF COURSE:
SE 1/4, NW 1/4 SEC 20 - 0.1 ACRES
SW 1/4 NE 1/4 SEC 20 - 0.1 ACRES
NW 1/4 SE 1/4 SEC 20 - 4.0 ACRES
NE 1/4 SW 1/4 SEC 20 - 11.6 ACRES
TOTAL = 15.8 ACRES

RECREATION PONDS:
POND #1 SE 1/4, SE 1/4 SEC 20 - 1.0 ACRE/FT
POND #2 SE 1/4, SE 1/4 SEC 20 - 1.0 ACRE/FT
POND #3 SE 1/4, SE 1/4 SEC 20 - 1.8 ACRE/FT
POND #4 SW 1/4, SE 1/4 SEC 20 - 0.9 ACRE/FT
POND #5 SW 1/4, SW 1/4 SEC 20 - 0.2 ACRE/FT
POND #6 SE 1/4, SW 1/4 SEC 20 - 0.1 ACRE/FT
POND #7 SE 1/4, SW 1/4 SEC 20 - 0.2 ACRE/FT
POND #8 NE 1/4, SW 1/4 SEC 20 - 0.2 ACRE/FT
POND #9 NE 1/4, SW 1/4 SEC 20 - 0.2 ACRE/FT

DOMESTIC STORAGE:
WATER TANK "1-A" - 21,000 GAL
WATER TANK "1-B" - 10,650 GAL
WATER TANK "3-A" - 21,000 GAL
WATER TANK "4-A" - 19,800 GAL

LENGTH OF SUPPLY LINES:
APPROX. 2,400 LF. OF 3" + 4" PVC
APPROX. 17,400 LF. OF 1 1/2", 3", + 4" PVC



PRESENT:
164 MANUFACTURED HOMES
88 RECREATIONAL VEHICLES
3 LAUNDRY BUILDINGS

FUTURE:
65 HOME SITES

DOMESTIC (1227 TOTAL)

NE 1/4, SW 1/4 SEC 21
SE 1/4, SW 1/4 SEC 21

ALTERNATE WATER SUPPLY
WELL #2 WELL ID IS UNKNOWN
1725' NORTH + 327' WEST
FROM SE CORNER SECTION 20

PRIMARY WATER SUPPLY
WELL #3 WELL ID #CLAC 6011
1147' NORTH + 489.4' EAST
FROM SW CORNER SECTION 21

WATER TANK
10,650 GAL

WATER TANK
61,650 GAL

POND "C"
0.5 ACRES
3.5' DEEP

POND "D"
0.7 ACRES
2.3' DEEP

POND "E"
0.5 ACRES
3' DEEP

WATER TANK
21,000 GAL

WATER TANK
10,650 GAL

POND "F"
0.1 ACRES
2' DEEP

POND "G"
0.05 ACRES
3' DEEP

POND "H"
0.05 ACRES
3' DEEP

WATER TANK
21,000 GAL

WATER TANK
21,000 GAL

NE 1/4, NW 1/4 SEC 29
SW 1/4, NE 1/4 SEC 29
SE 1/4, NE 1/4 SEC 29
NW 1/4, NE 1/4 SEC 29

K&D
K. & D. ENGINEERING, Inc.
100 W. 1st Street, Suite 102
Gresham, Oregon 97030
(503) 666-4848

Date: 10/16/2003
Time: 1:00:00 PM
User: KDO
Scale: 1"=200'(H)S
Proj: App-03-169-110-110-01-Water (L&S) (RBR)