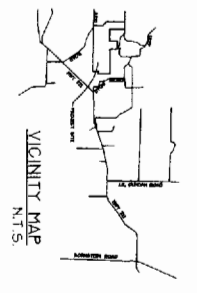


- LEGEND**
- WATER SUPPLY + DISTRIBUTION LINES
 - MANUFACTURED HOMES
 - ▣ RECREATIONAL VEHICLES
 - WELL
 - ▨ AREA TO BE IRRIGATED

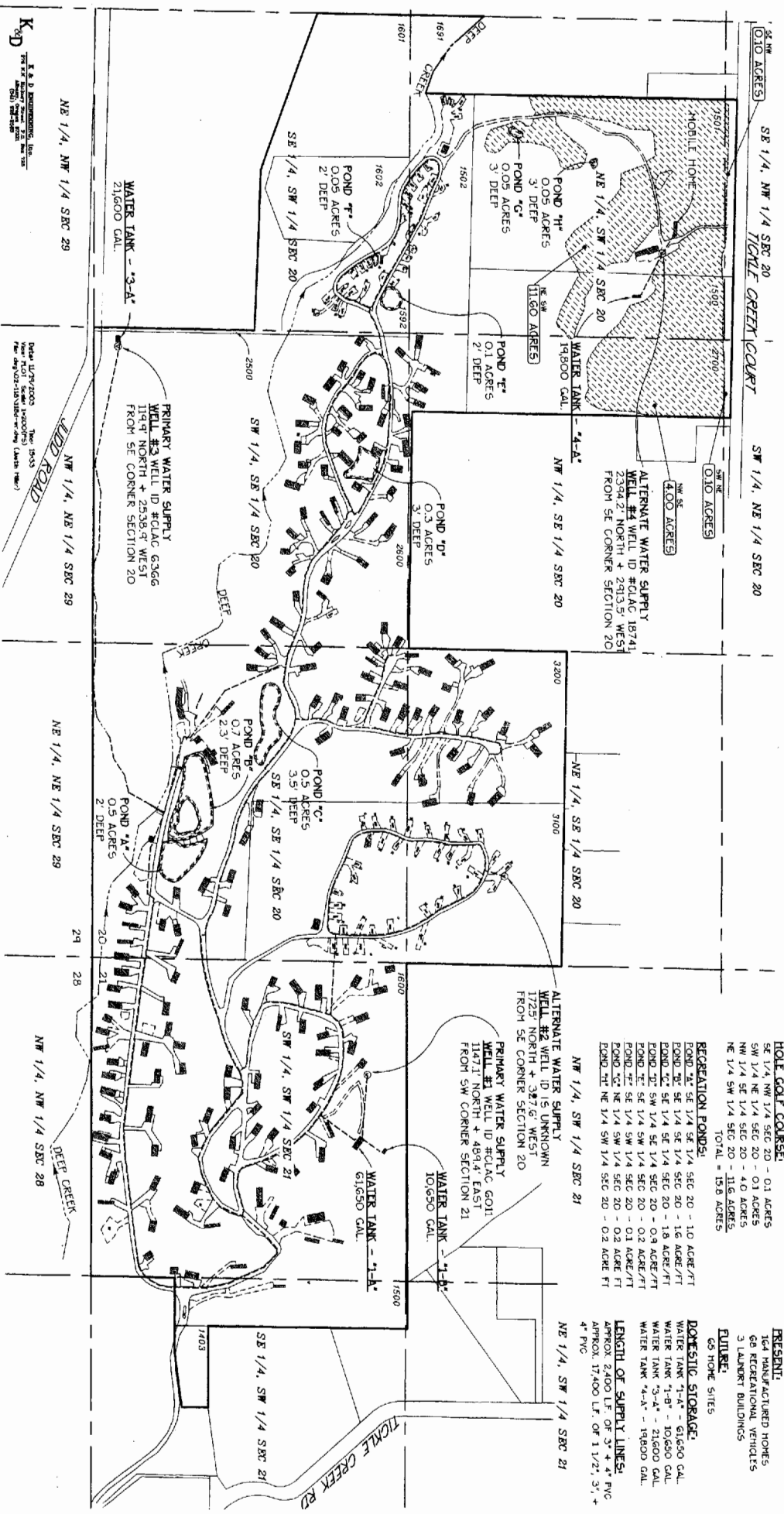
GROUND WATER APPLICATION MAP
 IN NAME OF
BIG VALLEY WOODS WATER CORPORATION
 LOCATED IN SECTIONS 20 + 21, T. 2 S.,
 R. 4 E, W.M., CLACKAMAS COUNTY, OREGON

NOVEMBER 19, 2003

SITE ADDRESS:
 32700 SE LEEWOOD LANE
 BORING, OR 97004



Copy R 85875 - R 85882.



IRRIGATION OF LAWNS
 AROUND RESIDENCES - UP TO 52.2 ACRES

USE:

DOMESTIC (227 TOTAL)

IRRIGATION OF 9 HOLE GOLF COURSE:
 SE 1/4, NW 1/4 SEC 20 - 0.1 ACRES
 SW 1/4 NE 1/4 SEC 20 - 0.1 ACRES
 NW 1/4 SE 1/4 SEC 20 - 4.0 ACRES
 NE 1/4 SW 1/4 SEC 20 - 11.6 ACRES
 TOTAL = 15.8 ACRES

PRESENT:
 164 MANUFACTURED HOMES
 68 RECREATIONAL VEHICLES
 3 LAUNDRY BUILDINGS

RECREATION PONDS:
 POND 1-A SE 1/4 SE 1/4 SEC 20 - 1.0 ACRE/FT
 POND 1-B SE 1/4 SE 1/4 SEC 20 - 1.6 ACRE/FT
 POND 1-C SE 1/4 SE 1/4 SEC 20 - 1.8 ACRE/FT
 POND 1-D SW 1/4 SE 1/4 SEC 20 - 0.9 ACRE/FT
 POND 1-E SE 1/4 SW 1/4 SEC 20 - 0.2 ACRE/FT
 POND 1-F SE 1/4 SW 1/4 SEC 20 - 0.1 ACRE/FT
 POND 1-G NE 1/4 SW 1/4 SEC 20 - 0.2 ACRE FT
 POND 1-H NE 1/4 SW 1/4 SEC 20 - 0.2 ACRE FT

DOMESTIC STORAGE:
 WATER TANK 1-A - 61,650 GAL.
 WATER TANK 1-B - 10,650 GAL.
 WATER TANK 1-C - 21,600 GAL.
 WATER TANK 1-D - 19,800 GAL.
 WATER TANK 1-E - 19,800 GAL.

ALTERNATE WATER SUPPLY WELL #2 WELL ID #CLAC 18741
 1725' NORTH + 327'6" WEST
 FROM SE CORNER SECTION 20

LENGTH OF SUPPLY LINES:
 APPROX. 2,400 LF. OF 3" + 4" PVC
 APPROX. 17,400 LF. OF 1 1/2", 3", + 4" PVC

ALTERNATE WATER SUPPLY WELL #3 WELL ID #CLAC 6366
 1147' NORTH + 489'4" EAST
 FROM SW CORNER SECTION 21

NE 1/4, SW 1/4 SEC 21

ALTERNATE WATER SUPPLY WELL #1 WELL ID #CLAC 6011
 1147' NORTH + 489'4" EAST
 FROM SW CORNER SECTION 21

NE 1/4, SW 1/4 SEC 21

K&B ENGINEERING, INC.
 700 NE 10th Street, Suite 100
 Portland, OR 97232
 (503) 255-1111

DANA LUTZ/2000
 NEW FLOOR SLAB LAYOUTS
 NEW 194' NORTH + 253'8" WEST
 FROM SE CORNER SECTION 20

DANA LUTZ/2000
 NEW FLOOR SLAB LAYOUTS
 NEW 194' NORTH + 253'8" WEST
 FROM SE CORNER SECTION 20