

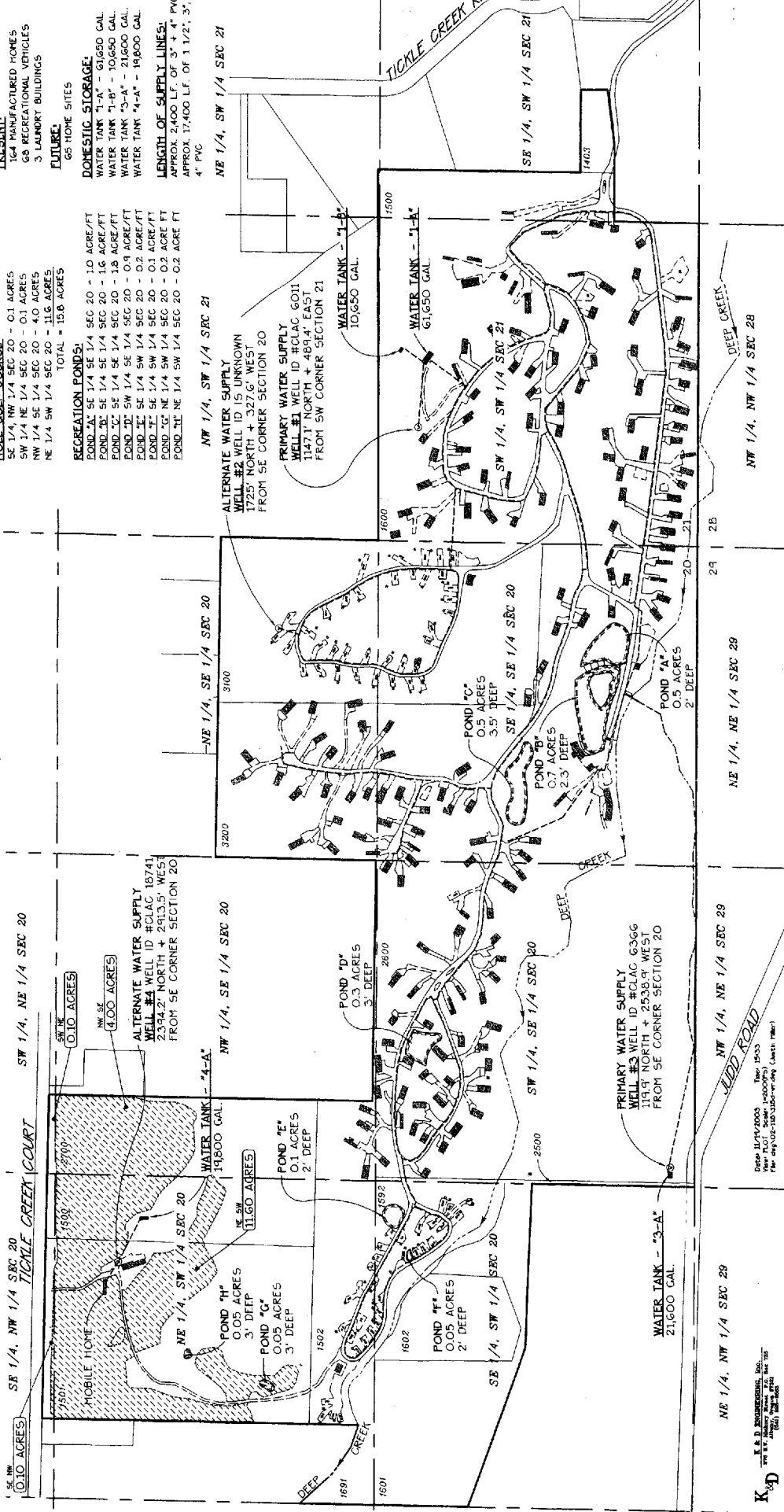
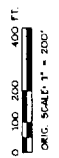
App R 85875 - R 85882

GROUND WATER APPLICATION MAP

IN NAME OF  
**BIG VALLEY WOODS WATER CORPORATION**  
 LOCATED IN SECTIONS 20 + 21, T. 2 S.,  
 R. 4 E., W.M., CLACKAMAS COUNTY, OREGON

NOVEMBER 19, 2003

- LEGEND**
- WATER SUPPLY + DISTRIBUTION LINES
  - MANUFACTURED HOMES
  - RECREATIONAL VEHICLES
  - WELL
  - ▨ AREA TO BE IRRIGATED



IRRIGATION OF LAWNS  
 AROUND RESIDENCES - UP TO 52.2 ACRES

IRRIGATION OF 9  
 HOLE GOLF COURSE:  
 SE 1/4, NW 1/4 SEC 20 - 0.1 ACRES  
 SW 1/4, NE 1/4 SEC 20 - 0.1 ACRES  
 NW 1/4, SE 1/4 SEC 20 - 4.0 ACRES  
 NE 1/4, SW 1/4 SEC 20 - 11.6 ACRES  
 TOTAL = 15.8 ACRES

RECREATION PONDS:  
 POND #1 SE 1/4, SE 1/4 SEC 20 - 1.0 ACRE/FT  
 POND #2 SE 1/4, SE 1/4 SEC 20 - 1.5 ACRE/FT  
 POND #3 SE 1/4, SE 1/4 SEC 20 - 1.8 ACRE/FT  
 POND #4 SE 1/4, SE 1/4 SEC 20 - 0.9 ACRE/FT  
 POND #5 SE 1/4, SW 1/4 SEC 20 - 0.2 ACRE/FT  
 POND #6 SE 1/4, SW 1/4 SEC 20 - 0.1 ACRE/FT  
 POND #7 NE 1/4, SW 1/4 SEC 20 - 0.2 ACRE/FT  
 POND #8 NE 1/4, SW 1/4 SEC 20 - 0.2 ACRE/FT  
 POND #9 NE 1/4, SW 1/4 SEC 20 - 0.2 ACRE/FT

DOMESTIC STORAGE:  
 WATER TANK "1-A" - 61,650 GAL  
 WATER TANK "1-B" - 10,650 GAL  
 WATER TANK "3-A" - 21,600 GAL  
 WATER TANK "4-A" - 19,800 GAL

LENGTH OF SUPPLY LINES:  
 APPROX. 2,400 LF. OF 3" + 4" PVC  
 APPROX. 17,400 LF. OF 1 1/2", 3", +  
 4" PVC

VICINITY MAP  
 N.T.S.

DOMESTIC (227 TOTAL)  
 PRESENT:  
 164 MANUFACTURED HOMES  
 63 RECREATIONAL VEHICLES  
 3 LAUNDRY BUILDINGS  
 FUTURE:  
 63 HOME SITES

NE 1/4, SW 1/4 SEC 21  
 SE 1/4, SW 1/4 SEC 21  
 NW 1/4, NW 1/4 SEC 28  
 NE 1/4, NE 1/4 SEC 29

NE 1/4, SW 1/4 SEC 21  
 SE 1/4, SW 1/4 SEC 21  
 NW 1/4, NW 1/4 SEC 28  
 NE 1/4, NE 1/4 SEC 29

NE 1/4, SW 1/4 SEC 21  
 SE 1/4, SW 1/4 SEC 21  
 NW 1/4, NW 1/4 SEC 28  
 NE 1/4, NE 1/4 SEC 29

NE 1/4, SW 1/4 SEC 21  
 SE 1/4, SW 1/4 SEC 21  
 NW 1/4, NW 1/4 SEC 28  
 NE 1/4, NE 1/4 SEC 29

NE 1/4, SW 1/4 SEC 21  
 SE 1/4, SW 1/4 SEC 21  
 NW 1/4, NW 1/4 SEC 28  
 NE 1/4, NE 1/4 SEC 29

NE 1/4, SW 1/4 SEC 21  
 SE 1/4, SW 1/4 SEC 21  
 NW 1/4, NW 1/4 SEC 28  
 NE 1/4, NE 1/4 SEC 29

NE 1/4, SW 1/4 SEC 21  
 SE 1/4, SW 1/4 SEC 21  
 NW 1/4, NW 1/4 SEC 28  
 NE 1/4, NE 1/4 SEC 29

NE 1/4, SW 1/4 SEC 21  
 SE 1/4, SW 1/4 SEC 21  
 NW 1/4, NW 1/4 SEC 28  
 NE 1/4, NE 1/4 SEC 29

NE 1/4, SW 1/4 SEC 21  
 SE 1/4, SW 1/4 SEC 21  
 NW 1/4, NW 1/4 SEC 28  
 NE 1/4, NE 1/4 SEC 29

NE 1/4, SW 1/4 SEC 21  
 SE 1/4, SW 1/4 SEC 21  
 NW 1/4, NW 1/4 SEC 28  
 NE 1/4, NE 1/4 SEC 29

NE 1/4, SW 1/4 SEC 21  
 SE 1/4, SW 1/4 SEC 21  
 NW 1/4, NW 1/4 SEC 28  
 NE 1/4, NE 1/4 SEC 29

NE 1/4, SW 1/4 SEC 21  
 SE 1/4, SW 1/4 SEC 21  
 NW 1/4, NW 1/4 SEC 28  
 NE 1/4, NE 1/4 SEC 29

NE 1/4, SW 1/4 SEC 21  
 SE 1/4, SW 1/4 SEC 21  
 NW 1/4, NW 1/4 SEC 28  
 NE 1/4, NE 1/4 SEC 29

NE 1/4, SW 1/4 SEC 21  
 SE 1/4, SW 1/4 SEC 21  
 NW 1/4, NW 1/4 SEC 28  
 NE 1/4, NE 1/4 SEC 29

NE 1/4, SW 1/4 SEC 21  
 SE 1/4, SW 1/4 SEC 21  
 NW 1/4, NW 1/4 SEC 28  
 NE 1/4, NE 1/4 SEC 29

NE 1/4, SW 1/4 SEC 21  
 SE 1/4, SW 1/4 SEC 21  
 NW 1/4, NW 1/4 SEC 28  
 NE 1/4, NE 1/4 SEC 29

NE 1/4, SW 1/4 SEC 21  
 SE 1/4, SW 1/4 SEC 21  
 NW 1/4, NW 1/4 SEC 28  
 NE 1/4, NE 1/4 SEC 29

NE 1/4, SW 1/4 SEC 21  
 SE 1/4, SW 1/4 SEC 21  
 NW 1/4, NW 1/4 SEC 28  
 NE 1/4, NE 1/4 SEC 29

NE 1/4, SW 1/4 SEC 21  
 SE 1/4, SW 1/4 SEC 21  
 NW 1/4, NW 1/4 SEC 28  
 NE 1/4, NE 1/4 SEC 29

NE 1/4, SW 1/4 SEC 21  
 SE 1/4, SW 1/4 SEC 21  
 NW 1/4, NW 1/4 SEC 28  
 NE 1/4, NE 1/4 SEC 29

NE 1/4, SW 1/4 SEC 21  
 SE 1/4, SW 1/4 SEC 21  
 NW 1/4, NW 1/4 SEC 28  
 NE 1/4, NE 1/4 SEC 29

NE 1/4, SW 1/4 SEC 21  
 SE 1/4, SW 1/4 SEC 21  
 NW 1/4, NW 1/4 SEC 28  
 NE 1/4, NE 1/4 SEC 29

NE 1/4, SW 1/4 SEC 21  
 SE 1/4, SW 1/4 SEC 21  
 NW 1/4, NW 1/4 SEC 28  
 NE 1/4, NE 1/4 SEC 29

DATE: 11/19/2003  
 DRAWN BY: [Name]  
 CHECKED BY: [Name]  
 PROJECT: [Name]

K&D  
 K&D ENGINEERING, Inc.  
 1000 N. [Address]  
 [City], [State] [Zip]