

App R 85875 - R 85882

GROUND WATER APPLICATION MAP

IN NAME OF
BIG VALLEY WOODS WATER CORPORATION
 LOCATED IN SECTIONS 20 + 21, T. 2 S.,
 R. 4 E., W.M., CLACKAMAS COUNTY, OREGON

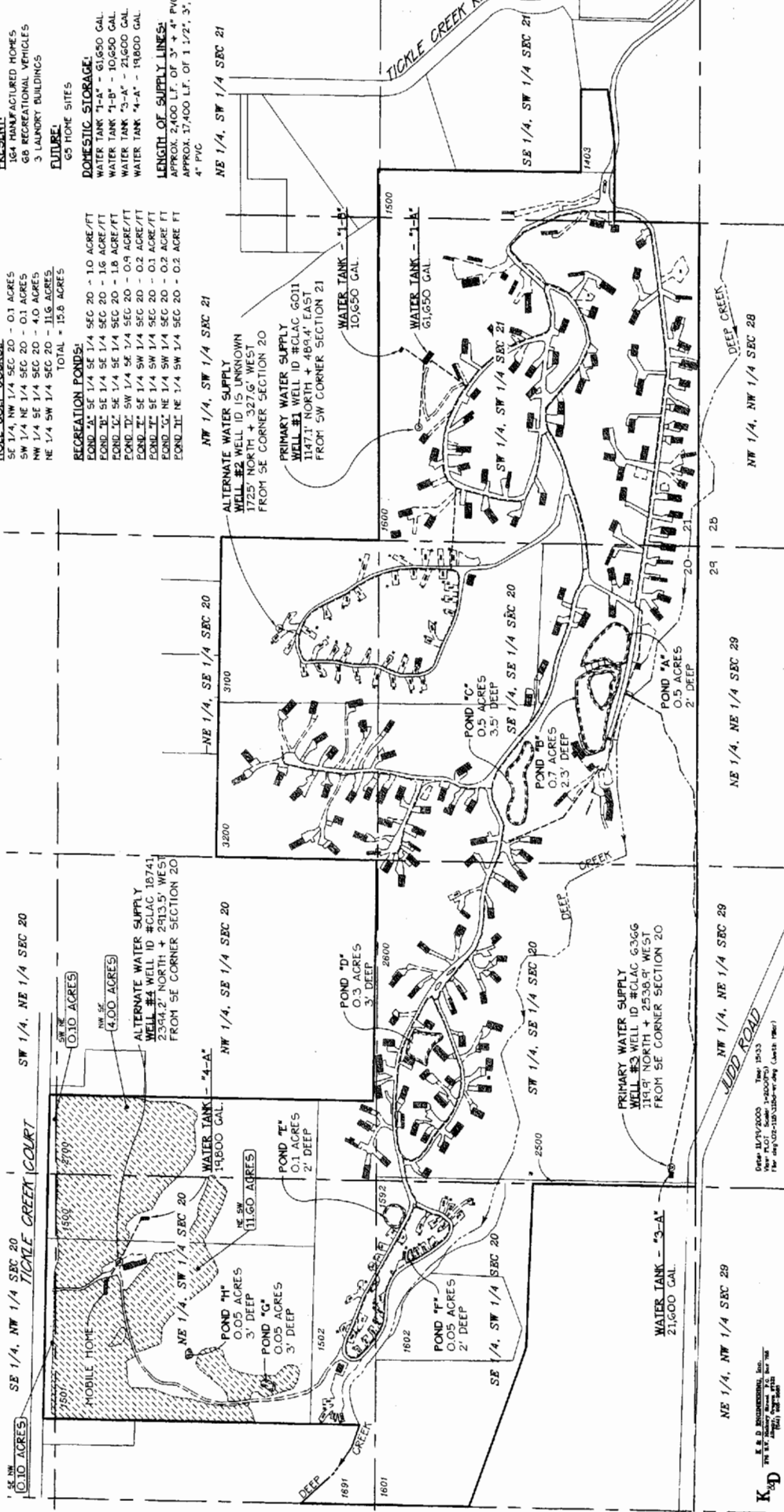
NOVEMBER 19, 2003

LEGEND
 WATER SUPPLY + DISTRIBUTION LINES
 MANUFACTURED HOMES
 RECREATIONAL VEHICLES
 WELL
 AREA TO BE IRRIGATED

0 100 200 400 FT.
 ORIG. SCALE: 1" = 200'



SE 1/4, NW 1/4 SBC 20
 TIGLE CREEK COURT
 SW 1/4, NE 1/4 SBC 20



SITE ADDRESS:
 32700 SE LEWOOD LANE
 BORING, OR 97004

USES:

IRRIGATION OF LAWNS
 AROUND RESIDENCES - UP TO 52.2 ACRES

IRRIGATION OF 9
 HOLE GOLF COURSE:
 SE 1/4, NW 1/4 SEC 20 - 0.1 ACRES
 SW 1/4, NE 1/4 SEC 20 - 0.1 ACRES
 NW 1/4, SE 1/4 SEC 20 - 4.0 ACRES
 NE 1/4, SW 1/4 SEC 20 - 11.6 ACRES
 TOTAL = 15.8 ACRES

RECREATION PONDS:
 POND #1 SE 1/4, SE 1/4 SEC 20 - 1.0 ACRE/FT
 POND #2 SE 1/4, SE 1/4 SEC 20 - 1.6 ACRE/FT
 POND #3 SE 1/4, SE 1/4 SEC 20 - 1.8 ACRE/FT
 POND #4 SE 1/4, SE 1/4 SEC 20 - 0.9 ACRE/FT
 POND #5 SE 1/4, SW 1/4 SEC 20 - 0.2 ACRE/FT
 POND #6 SE 1/4, SW 1/4 SEC 20 - 0.1 ACRE/FT
 POND #7 SE 1/4, SW 1/4 SEC 20 - 0.1 ACRE/FT
 POND #8 NE 1/4, SW 1/4 SEC 20 - 0.2 ACRE/FT
 POND #9 NE 1/4, SW 1/4 SEC 20 - 0.2 ACRE/FT

DOMESTIC STORAGE:
 WATER TANK #1-A - 61,650 GAL
 WATER TANK #1-B - 10,650 GAL
 WATER TANK #3-A - 21,600 GAL
 WATER TANK #4-A - 19,800 GAL

LENGTH OF SUPPLY LINES:
 APPROX. 2,400 FT. OF 3" + 4" PVC
 APPROX. 17,400 FT. OF 1 1/2", 3", +
 4" PVC

VICINITY MAP
 N.T.S.

DOMESTIC (2227 TOTAL)
 PRESENT:
 154 MANUFACTURED HOMES
 68 RECREATIONAL VEHICLES
 3 LAUNDRY BUILDINGS
 FUTURE:
 65 HOME SITES

NE 1/4, SW 1/4 SBC 21
 ALTERNATE WATER SUPPLY
 WELL #2 WELL ID IS UNKNOWN
 1725' NORTH + 327.6' WEST
 FROM SE CORNER SECTION 20
 PRIMARY WATER SUPPLY
 WELL #1 WELL ID #CLAG 6011
 1147.7' NORTH + 484.4' EAST
 FROM SW CORNER SECTION 21
 WATER TANK #1-B
 10,650 GAL
 WATER TANK #1-A
 61,650 GAL
 SE 1/4, SW 1/4 SBC 21
 NW 1/4, NE 1/4 SBC 29
 NE 1/4, NE 1/4 SBC 29
 NW 1/4, NW 1/4 SBC 28

Scale: 1/4" = 200'
 Date: 11/19/2003
 Ver. PLOT: Scale: 1/4" = 200'
 The City of Boring, Oregon (Clark 1981)

K
 K & B ENGINEERING, Inc.
 1111 S. BROADWAY SUITE 110, BORING, OR 97004
 (503) 338-2271