

WORK COPY

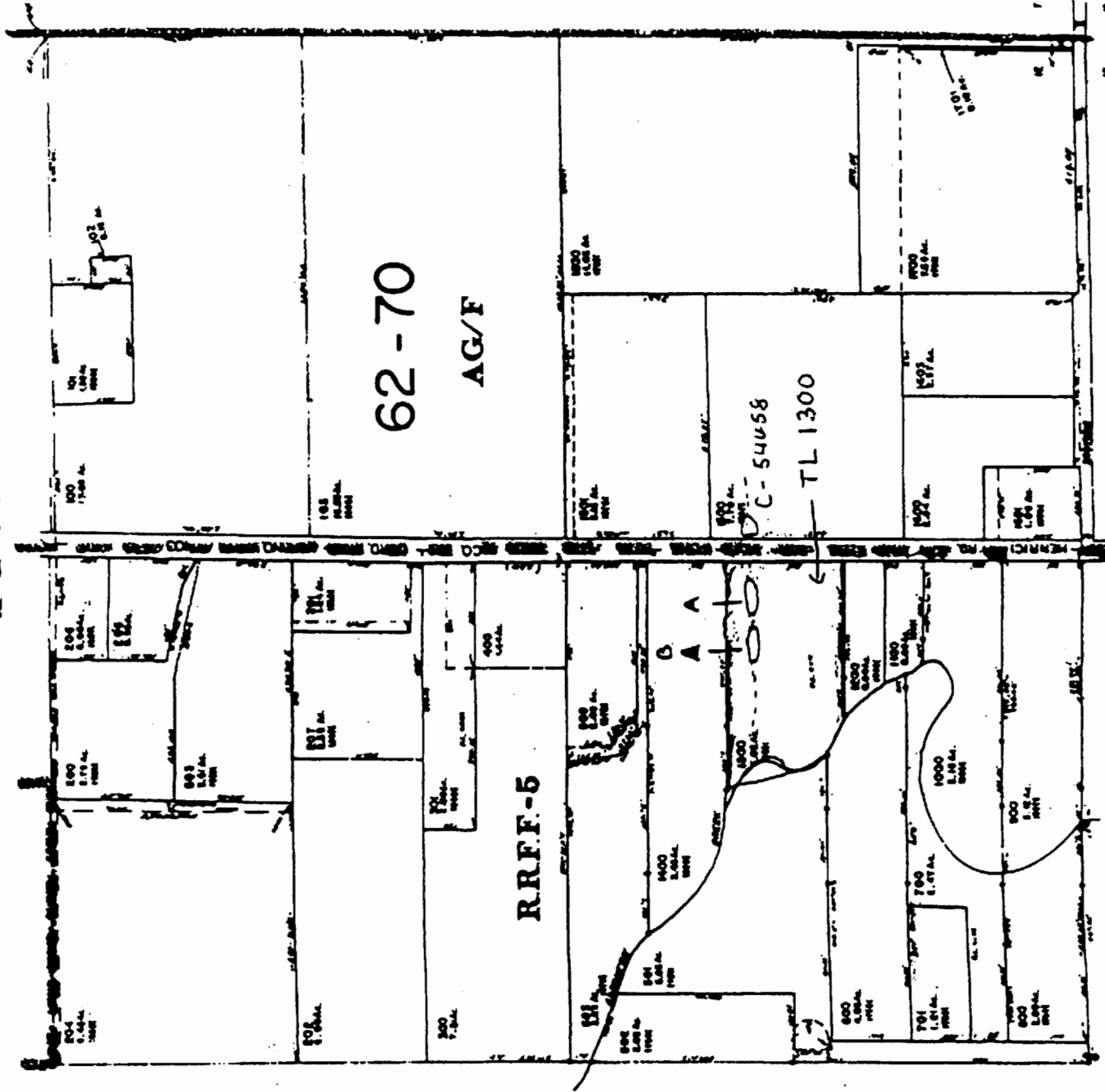
RECEIVED  
NOV 02 2004  
WATER RESOURCES DEPT  
SALEM, OREGON

APPROX  
SCALE

1" = 400 FEET

SE 1/4 SEC 12 T35 R2E W.M.  
CLACKAMAS COUNTY

This map was prepared for  
assessment purposes only.



Pond A - Dam Loc:  
835' N and 1145' E

Pond B - Dam Loc:  
835' N and 1035' E  
SW corner of the SE 1/4  
35, 2E, Sec 12

TL 1300 SEC 12 DC  
T35 R2E W.M.  
1" = 440'  
REVISED TO  
1" = 400 FEET