

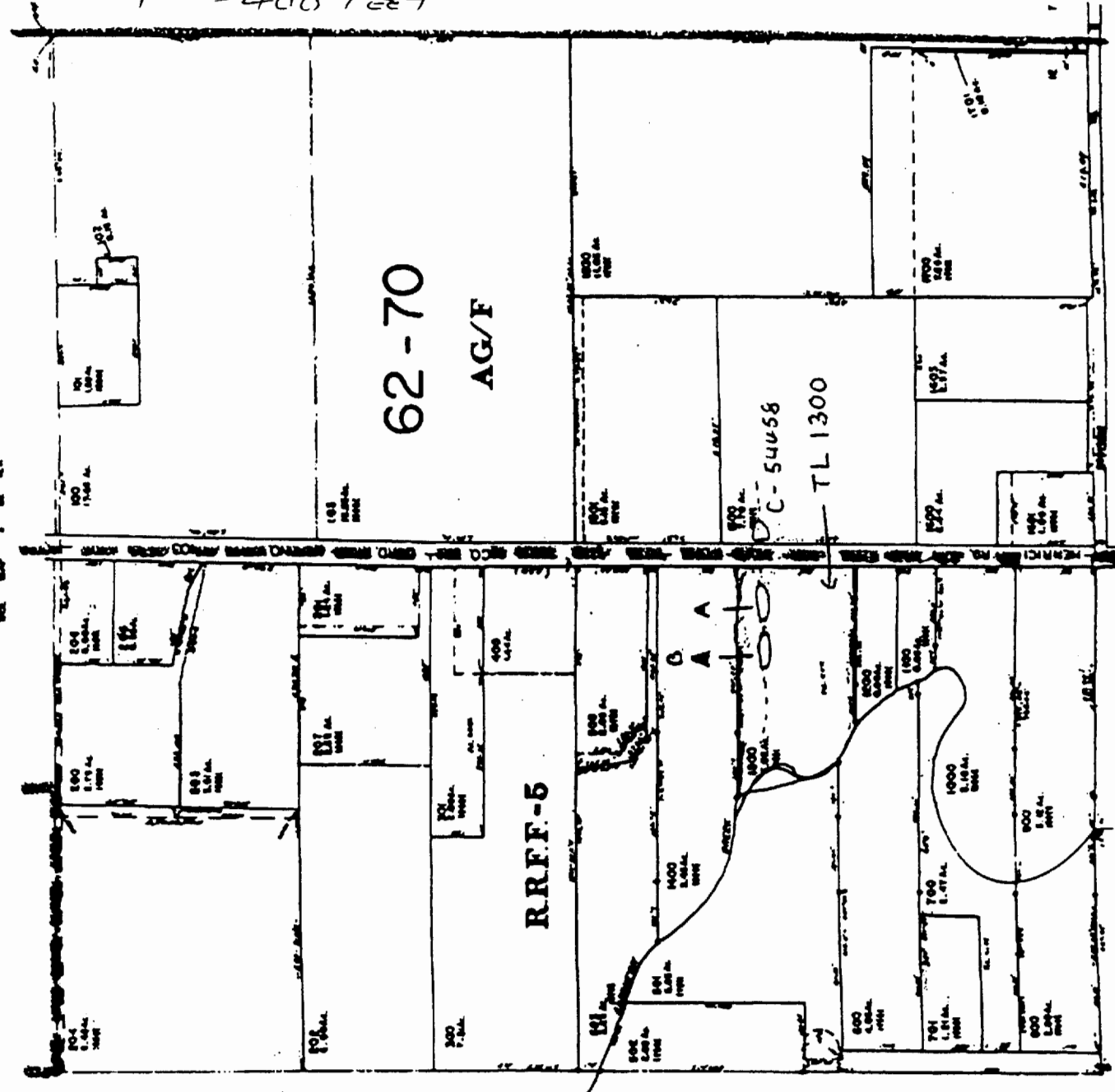
WORK COPY

RECEIVED
NOV 02 2004
WATER RESOURCES DEPT
SALEM, OREGON

APPROX.
SCALE
1" = 400 FEET

SE 1/4 SEC 12 T35 R2E W.M.
CLACKAMAS COUNTY

This map was prepared for
assessment purposes only.



Pond A - Dam Loc:
835' N and 1145' E

Pond B - Dam Loc:
835' N and 1035' E
SW corner of the SE 1/4
35, 2E, Sec 12

TL 1300 SEC 12 DC
T35 R2E W.M.
1" = 440'
REVISED SCALE
TO 1" = 400 FEET