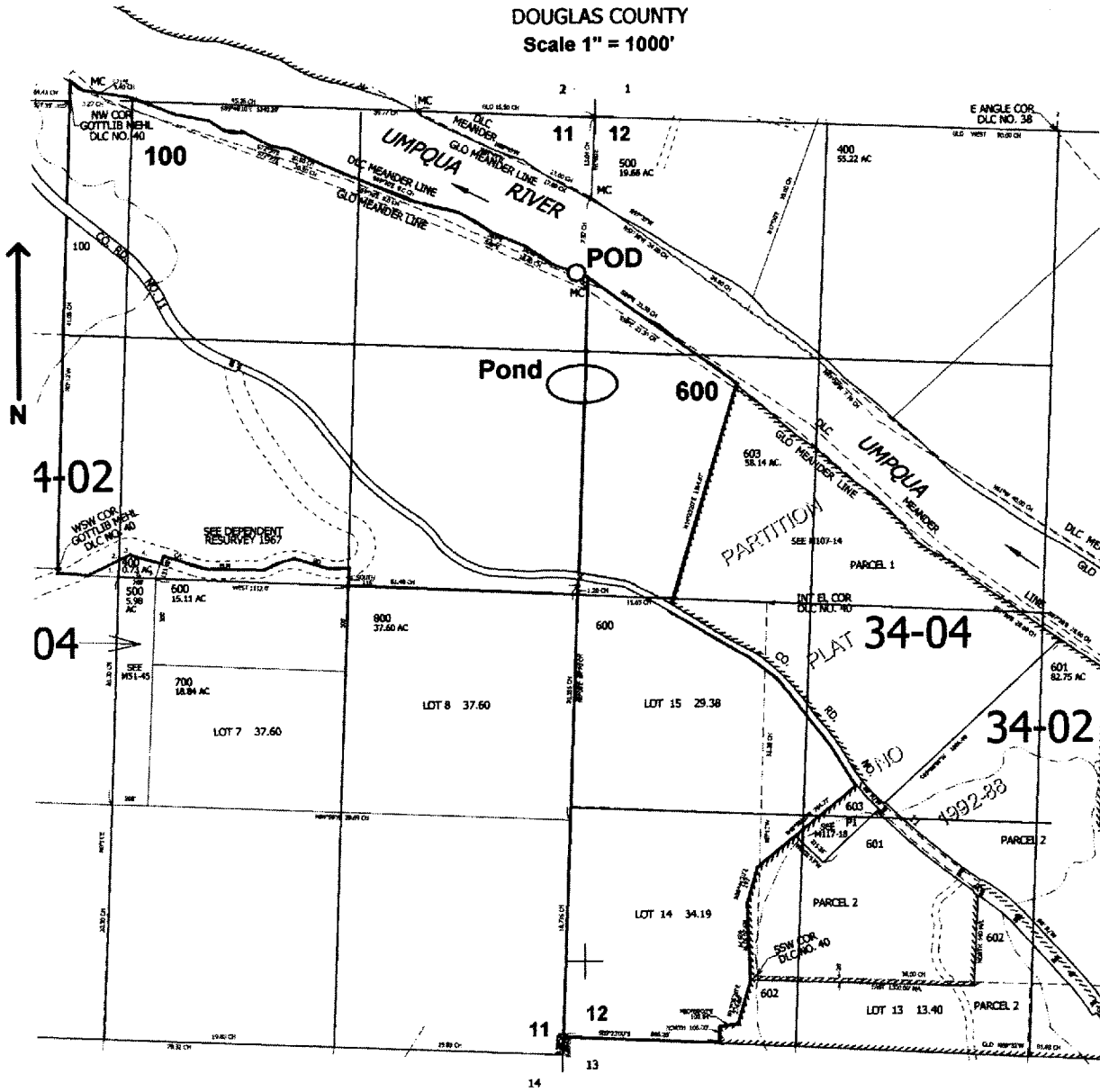


T.23S. R.8W. W.M.  
DOUGLAS COUNTY  
Scale 1" = 1000'



POD is located 900 ft. S. and 50 ft. W. } from the NE corner of Sec. 11  
 Pond is located 1550 ft. S. }

RECEIVED  
 OCT 08 2004  
 WATER RESOURCES DEPT  
 SALEM, OREGON