

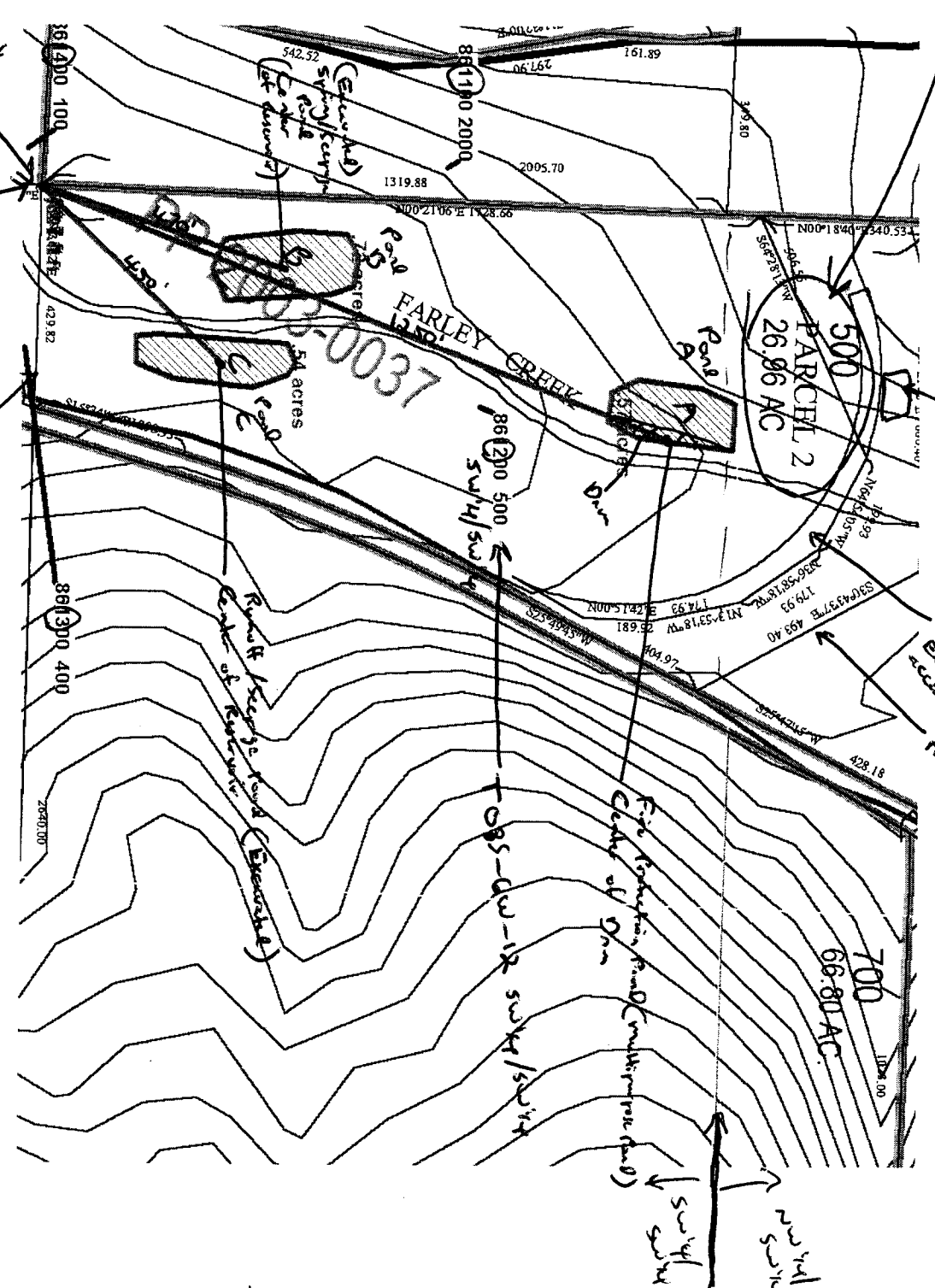
Jim Salcedo - 3810 Limestone Rd, Dallas, OK. 91338

# Polk County Map

T 08 S - R 06 W - S 12 SW 1/4 SW 1/4

2

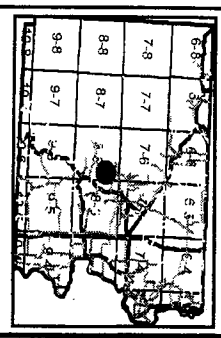
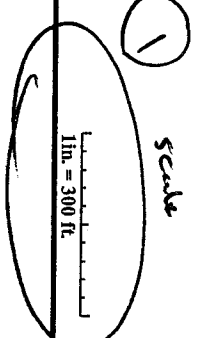
Taxlot 500  
26.96 AC



RECEIVED

JAN 26 2005

WATER RESOURCES DEPT  
SALEM, OREGON



1/18/05



- Community Development**
- Contours
  - Roads
  - OTHER
  - CO-GRAVEL
  - STATEHWY
  - CO-PAVED
  - Taxlots
  - Taxlot Arrows05
  - Taxlot Boundaries2
  - Taxlot05
  - TaxMap
  - TaxMap Line
  - TaxMap
  - TaxMap Line
  - TaxMap

- Pond Descriptions**
- Pond A 1250' North 390' East
  - Pond B 470' North 140' East
  - Pond C 450' North 300' East

④ All three ponds are located in SW 1/4 SW 1/4

This map was produced using the Polk County GIS data. The GIS data is maintained by the county to support its governmental activities. The county is not responsible for map errors, omissions, misuse or misinterpretation.

5

Govt survey corner  
Section 5 11, 12, 13 & 14  
Survey Line

3

TaxMap Sub Line  
TaxMap