

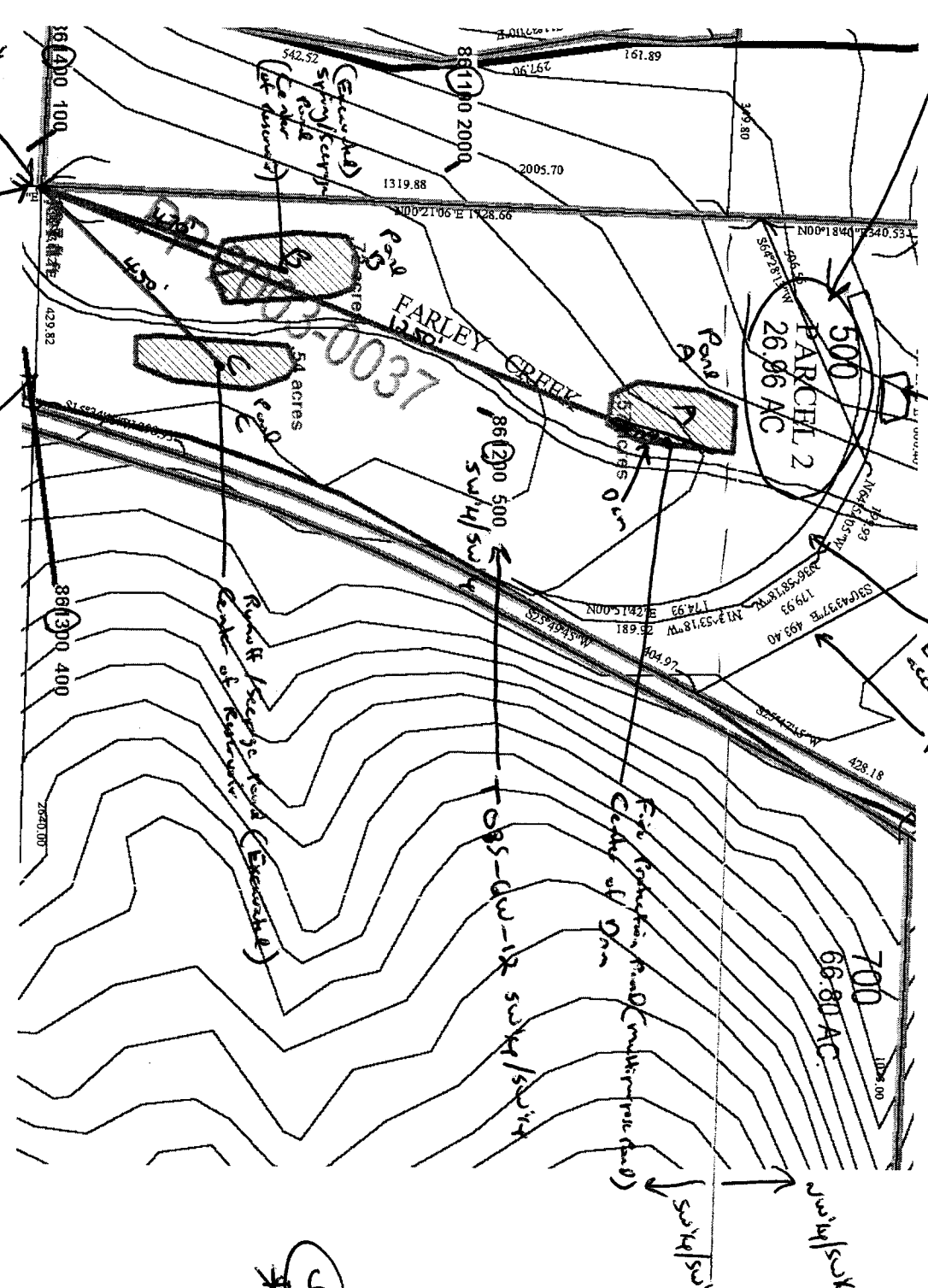
Jim Salsdorf - 3810 Limestone Rd, Davis, OR. 97338

Polk County Map

T 085 - R 03 - S 12 SW 1/4 SW 1/4

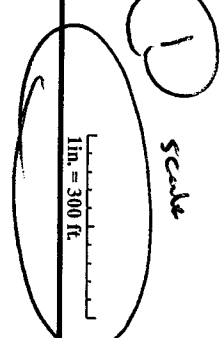
2

Total 500  
26.96 AC



5  
 \* Govt  
 survey  
 corner  
 Govt  
 survey  
 corner  
 11, 12, 13 & 14  
 Property Line

RECEIVED  
 JAN 28 2005  
 WATER RESOURCES DEPT  
 SALEM, OREGON



Community Development

- Contours
- Roads
- OTHER
- CO-GRAVEL
- STATEHWY
- CO-PAVED
- Taxlot05
- Taxlot Arrow05
- Taxlot Boundary?
- Taxlot05
- TaxMap Line
- TaxMap Sub Line
- TaxMap Ar

(Pond Description)

3

Pond A 1250' North 390' East

Pond B 470' North 140' East

Pond C 450' North 300' East

All three ponds are located in the SW 1/4 SW 1/4

6.8	7.8	8.8	9.8
5.3	7.7	8.7	9.7
6.4	7.6	8.6	9.6
7.5	7.5	8.5	9.5

1/18/05

This map was produced using the Polk County GIS data. The GIS data is maintained by the county to support the general public. The county is not responsible for map errors, omissions, misuse or misinterpretation.