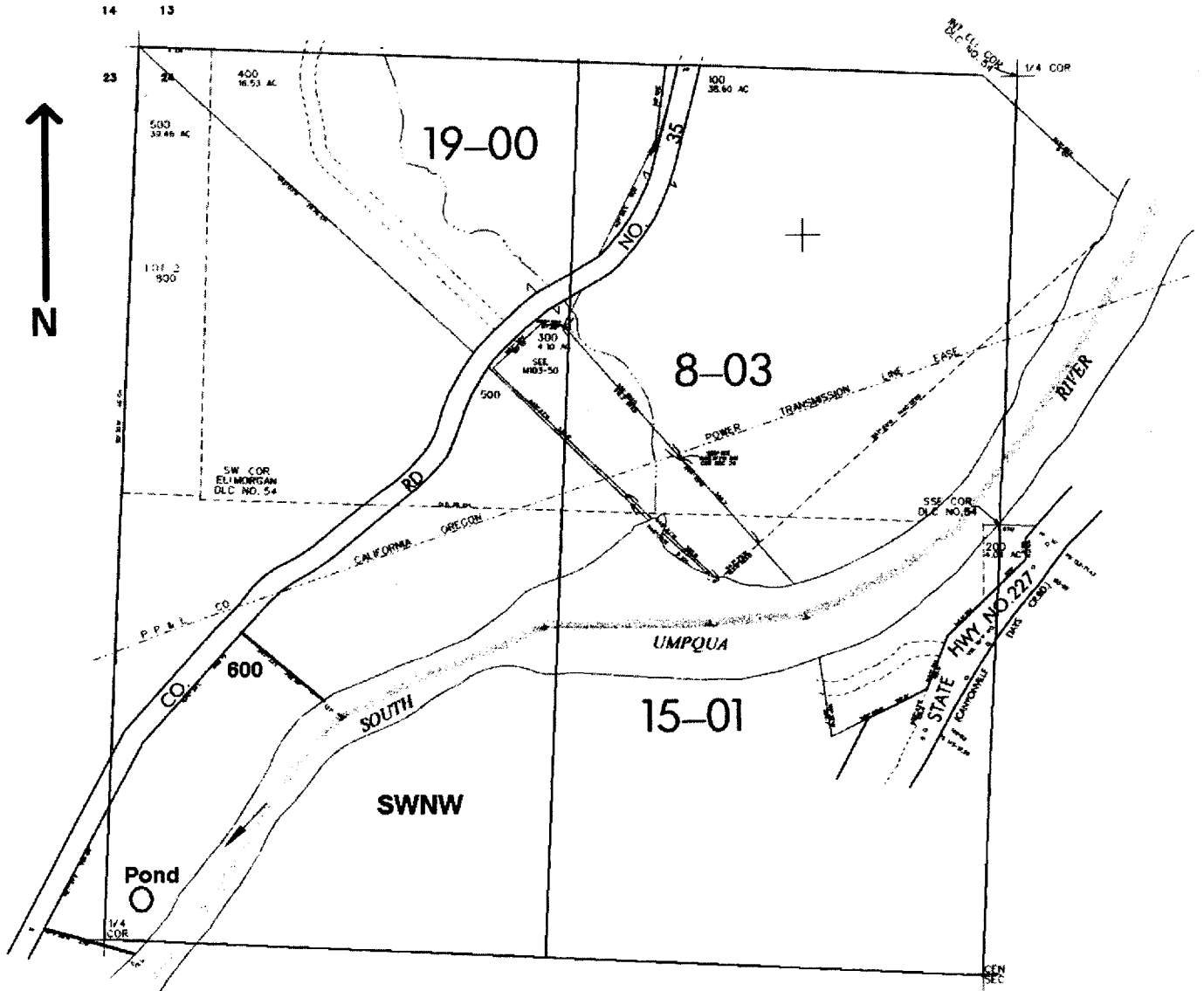


NW1/4 SEC. 24 T.30S. R.5 W. W.M.  
DOUGLAS COUNTY

Scale: 1" = 500'



Pond located 120 ft. N. and 100 ft. E. from the W. 1/4 corner of Sec. 24

app # R86153

**RECEIVED**  
JAN 26 2005  
WATER RESOURCES DEPT  
SALEM, OREGON