

7145 R6W  
SECTION 14 T.14S. R.6W. W.M.  
BENTON COUNTY

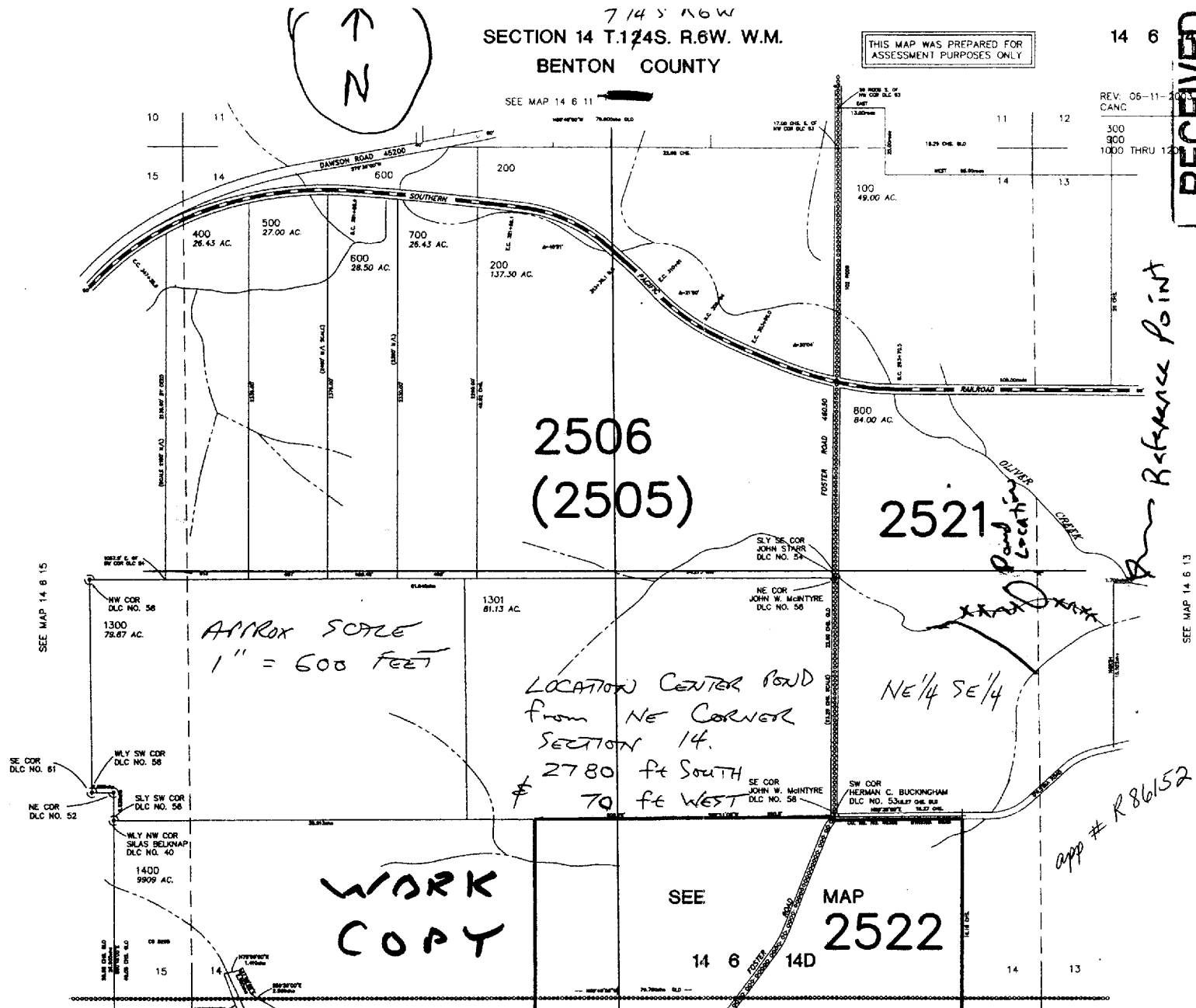
THIS MAP WAS PREPARED FOR  
ASSESSMENT PURPOSES ONLY

14 6

RECEIVED

JAN 24 2005

WATER RESOURCES DEF  
SALEM, OREGON



SEE MAP 14 B 15

SEE MAP 14 6 13

Reference Point

~~XXXX~~ incorrect seasonal stream location

— correct seasonal stream location

Pond location - SW 1/4 NE 1/4 SW 1/4 S19 T14S R6W

TAX LOT # 188395

app # R86152

SEE MAP 2522  
14 6 14D