

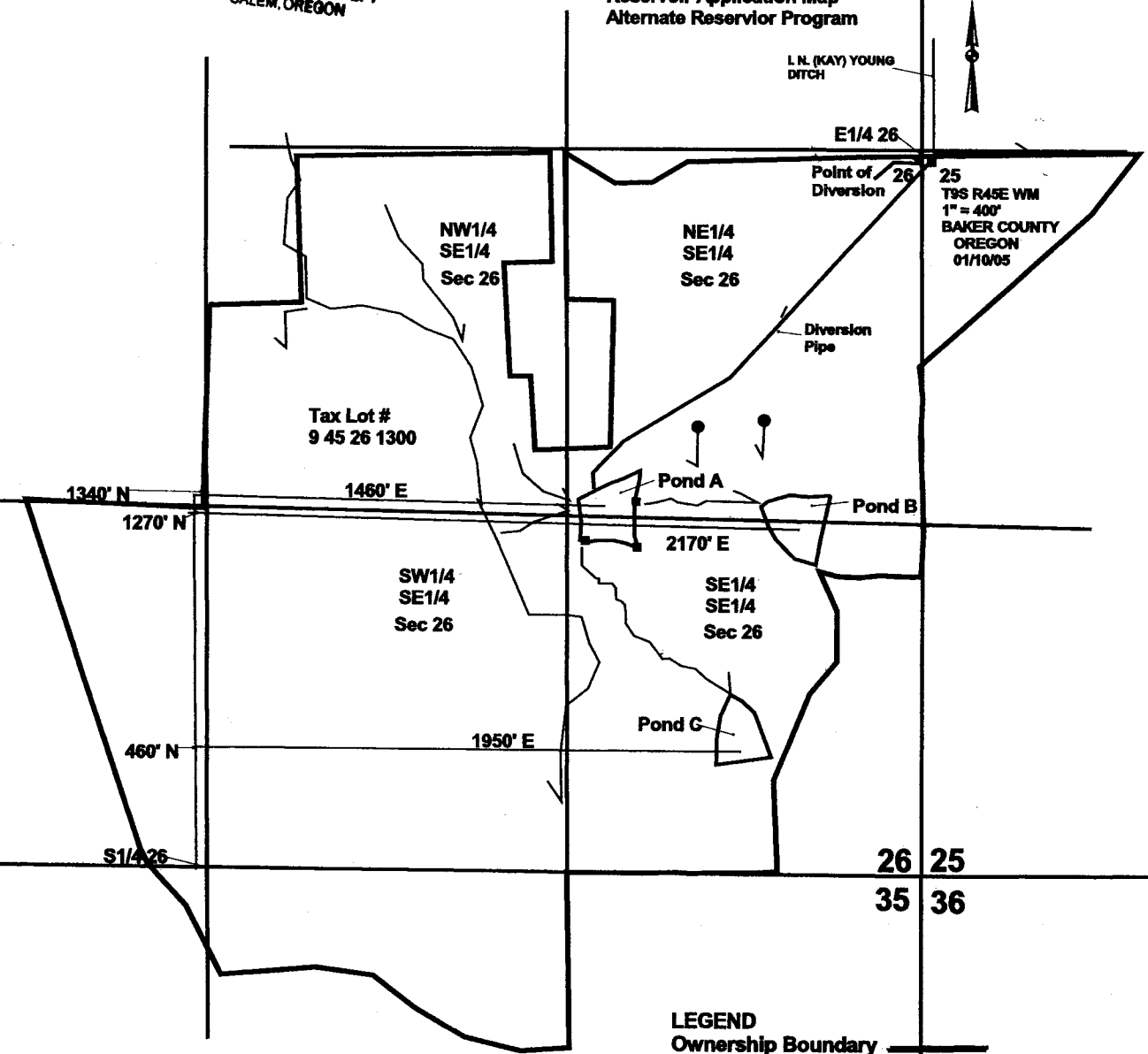
RECEIVED

FEB 02 2005
WATER RESOURCES DEPT
SALEM, OREGON

R. MURRAY

**Reservoir Application Map
Alternate Reservoir Program**

L.N. (KAY) YOUNG
DITCH



25
T9S R45E WM
1" = 400'
BAKER COUNTY
OREGON
01/10/05

POND A is N 1340' & E 1460'
of S1/4 Sec 26
POND B is N 1270' & E 2170'
of S1/4 Sec 26
POND C is N 460' & E 1950'
of S1/4 Sec 26

app # R 86165

LEGEND
Ownership Boundary ———
Irrig. Ditch/Swale ———
Pond ◁
Spring ●
Structure ■