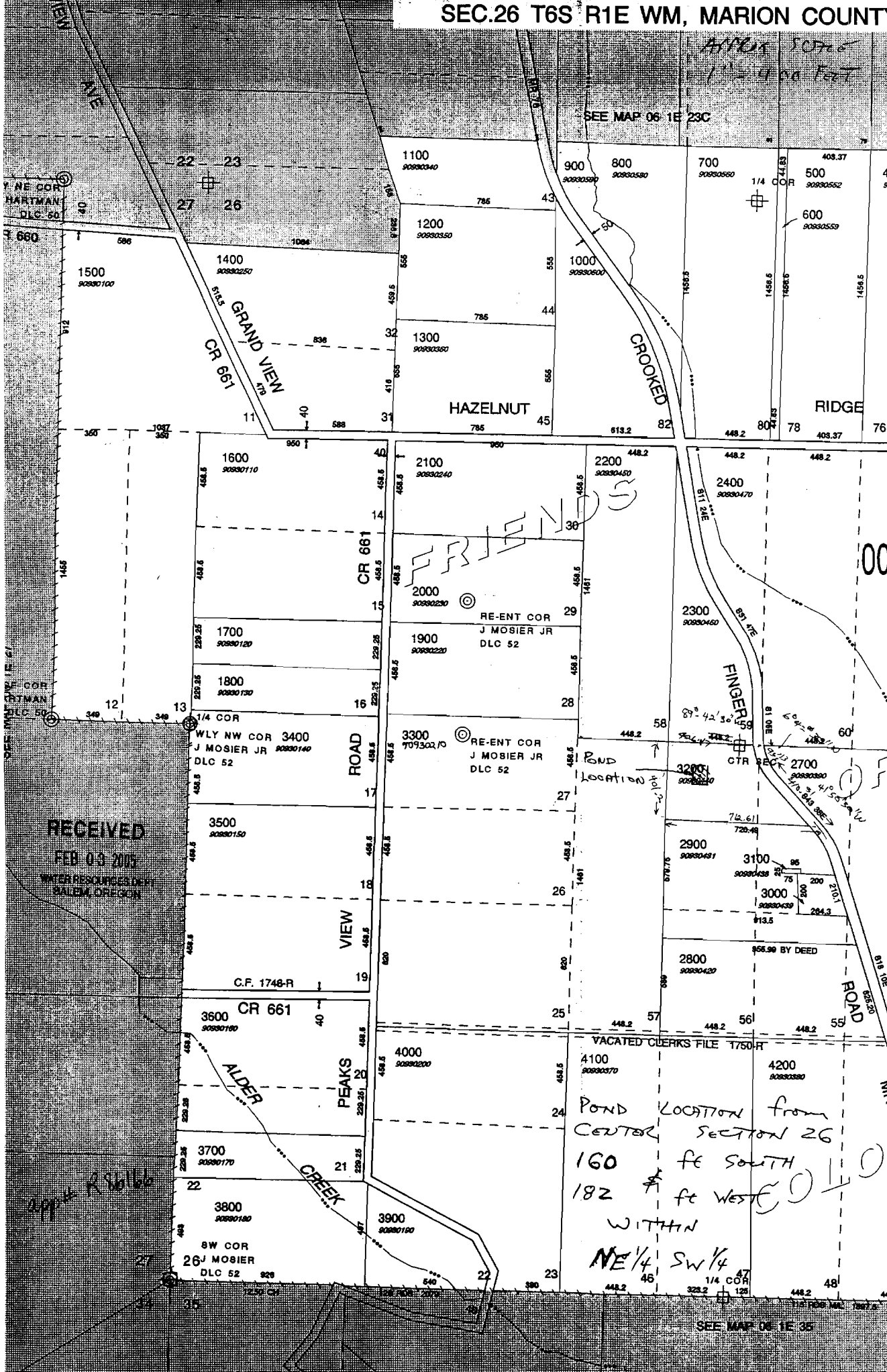


SEC.26 T6S R1E WM, MARION COUNTY



RECEIVED  
FEB 03 2005  
WATER RESOURCES DIV  
SALEM, OREGON

*app R 30166*

VACATED CLERKS FILE T750R  
POND LOCATION from  
CENTER SECTION 26  
160 FE SOUTH  
182 FE WEST  
WITHIN  
NE 1/4 SW 1/4

SEE MAP 06 1E 35