

T14S R6W
SECTION 14 T.14S. R.6W. W.M.
BENTON COUNTY

THIS MAP WAS PREPARED FOR
ASSESSMENT PURPOSES ONLY

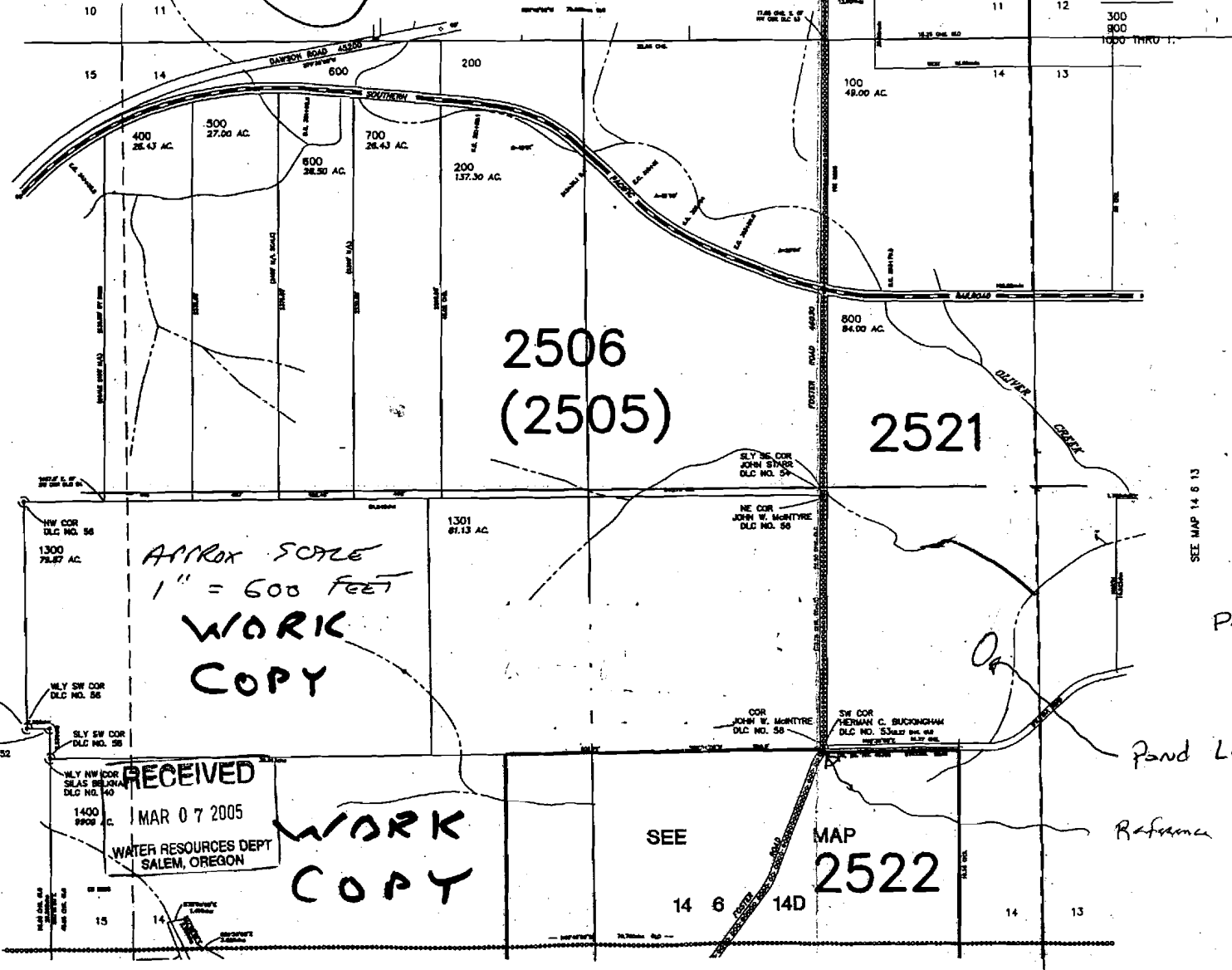
14 6

app # R86191

SEE MAP 14 6 11

REV: 06-11-
CANC

300
900
1000 THRU 1



POND LOCATED FROM
SE CORNER
SECTION 14
1700 ft NORTH
320 ft WEST

TAX Lot # 188395

Pond Location - 1050' - MAX ± 38'
From Reference Point

Pond Location - N44° 21.040'
W 123° 22.343'

Reference Point - SW corner of Property
N44° 20.957'
W 123° 22.558'

APPROX SCALE
1" = 600 FEET
WORK
COPY

RECEIVED
MAR 07 2005
WATER RESOURCES DEPT
SALEM, OREGON

WORK
COPY

SEE
MAP
2522

14 6 14D

SEE MAP 14 6 15

SEE MAP 14 6 13