

44-8

RECEIVED

MAR 03 2005

WATER RESOURCES DEPT
SALEM, OREGON

OWNERSHIP
BOUNDARY Lot 202

SE 1/4 SEC. 12
T6S R6W W4
Polk County

Pond is

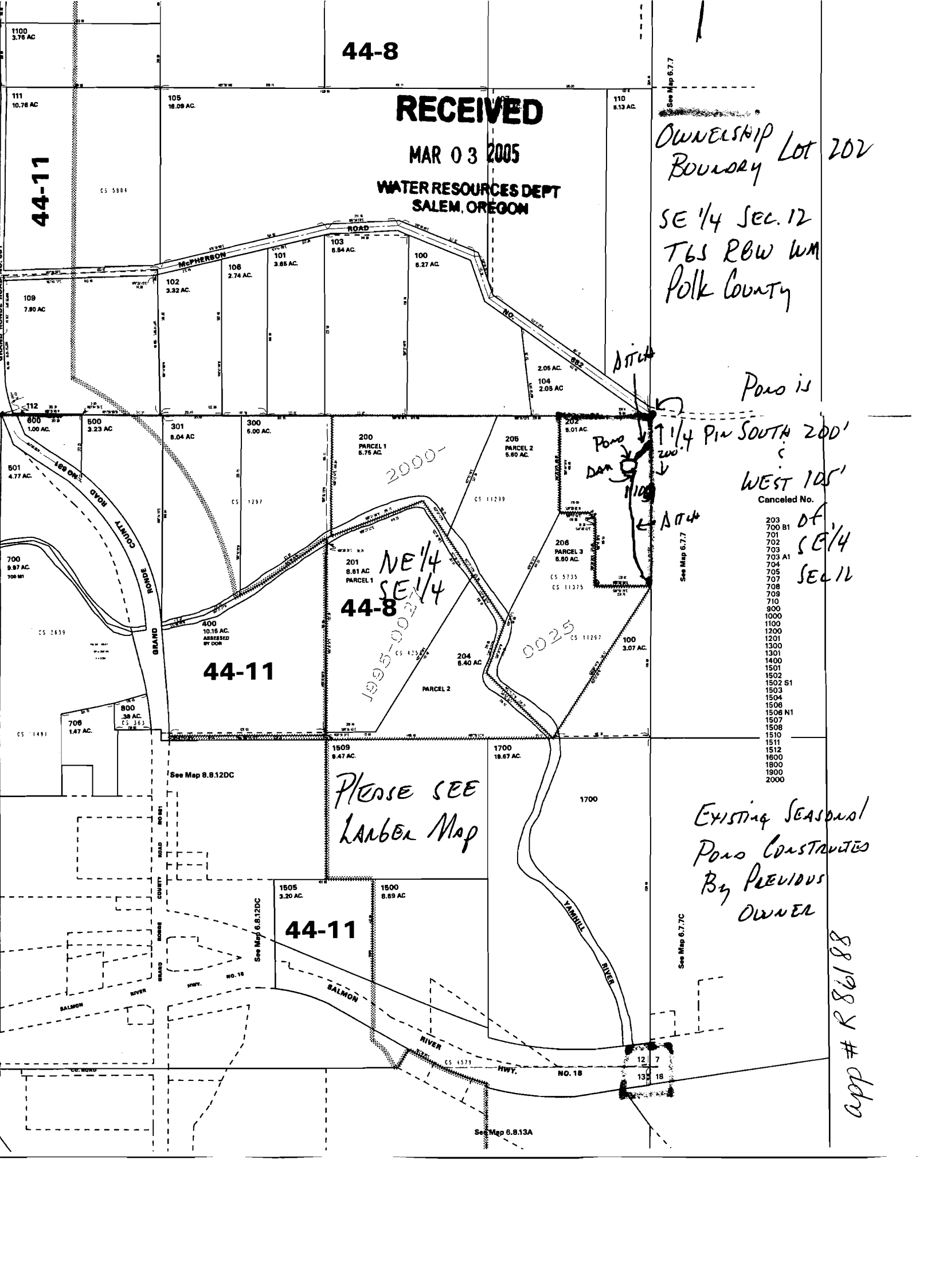
1/4 Pin SOUTH 200'
WEST 105'

Canceled No.

- 203
- 700 B1
- 701
- 702
- 703
- 703 A1
- 704
- 705
- 707
- 708
- 709
- 710
- 900
- 1000
- 1100
- 1200
- 1201
- 1300
- 1301
- 1400
- 1501
- 1502
- 1502 S1
- 1503
- 1504
- 1508
- 1508 N1
- 1507
- 1508
- 1510
- 1511
- 1512
- 1600
- 1800
- 1900
- 2000

EXISTING SEASONAL
POND CONSTRUCTED
BY PREVIOUS
OWNER

app # R 86188



44-11

44-8

44-11

PLEASE SEE
LAMBEA Map

NE 1/4
SE 1/4

2000-

0025

44-11

See Map 6.7.7

See Map 6.7.7

See Map 6.7.7C

See Map 6.8.13A

See Map 8.8.12DC

See Map 6.8.12DC

app # R 86188

Map Tax Lot
B11200 202
Serial #
403962
Map
b. B. 120
Tax Lot
202

0000
McKensie-Ro
bans Rowse

202
5.01 AC.

N89°55'05"W 375.00

Scale:
1" = 70'

Existing
Ditch

1/4 Pin

Ownership
Boundary



200'

Dam

Existing
Ditch

Pond is
South 200'
&
West 105'
of SE 1/4
Sec 12

NE Corner of
NE 1/4
SE 1/4

120.00

S89°50'05"W

S89°57'54"E

120.00

35.28

S44°48'42"E

650.00

N
↑

SE 1/4 Sec 12
T6S R14W W4
Polk County
Tax Lot 202

206
PARCEL 3
6.80 AC.

165.53

S00°19'50"W

S00°29'30"W

271.05

RECEIVED

MAR 03 2005

WATER RESOURCES DEPT
SALEM, OREGON

230.00

N89°55'50"E

S89°55'29"E

229.79

CS 5735

CS 11075

Easting
7400931

Northing
524653

Lon:
-124 23 53.99

Lat:
45 03 42.65