

SECTION 7

ALL BOUNDS MEASURED FROM NE CORNER

I 1600 FT SOUTH AND 2910 FT WEST
II 1660 FT SOUTH AND 2840 FT WEST
III 1530 FT SOUTH AND 2775 FT WEST
IV 1540 FT SOUTH AND 2650 FT WEST

25 FEB 05
Karin Johnson

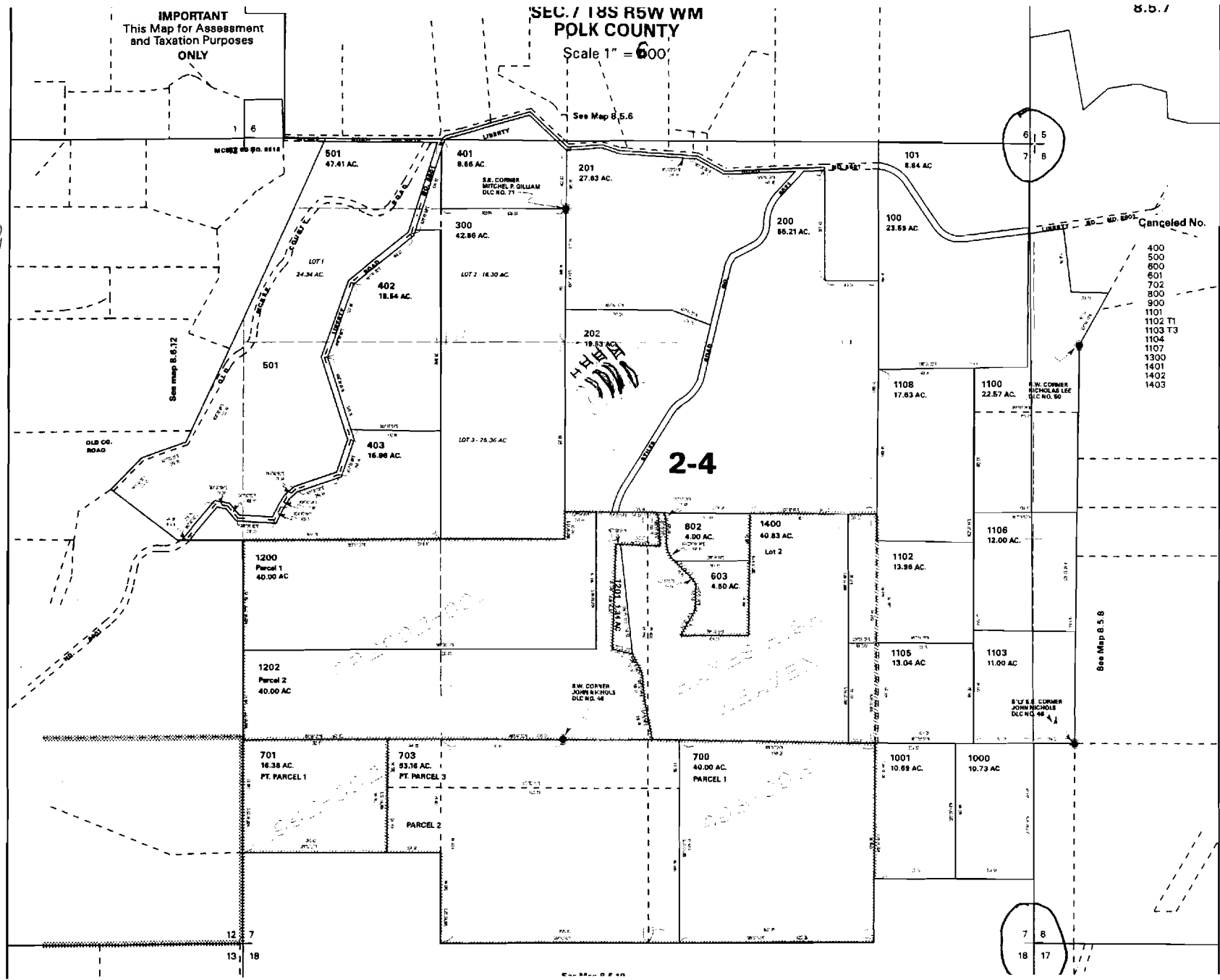
IMPORTANT
This Map for Assessment
and Taxation Purposes
ONLY

**SEC. 7 T8S R5W WM
POLK COUNTY**

Scale 1" = 600'

S. 5. 7

See Map 8.5.6



Canceled No.

- 400
- 500
- 600
- 601
- 702
- 800
- 900
- 1101
- 1102 T1
- 1103 T3
- 1104
- 1107
- 1300
- 1401
- 1402
- 1403

2-4

See Map 8.5.6

app # R 86180