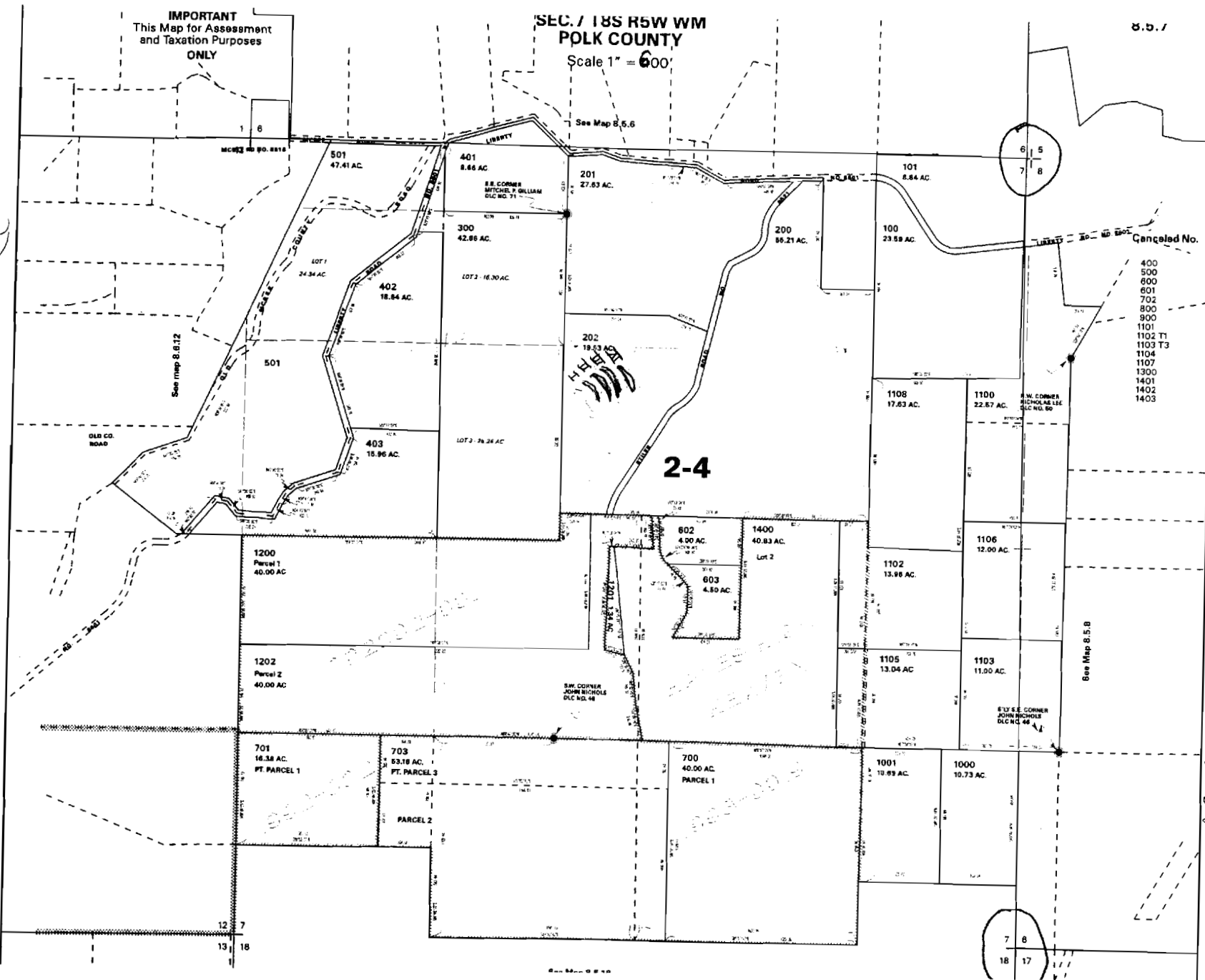


ARC ROWS MEASURED FROM NE CORNER SECTION 7  
1600 FT SOUTH AND 2910 FT WEST  
1560 FT SOUTH AND 2840 FT WEST  
1530 FT SOUTH AND 2775 FT WEST  
1540 FT SOUTH AND 2650 FT WEST

I  
II  
III  
IV

*Kim J. [Signature]*  
25 FEB 05



app # R 86180

8.5.7

SEC. 7 T18S R5W WM  
POLK COUNTY

Scale 1" = 600'

IMPORTANT  
This Map for Assessment  
and Taxation Purposes  
ONLY

See Map 8.5.6

See map 8.8.12

See Map 8.5.8

Canceled No.

- 400
- 500
- 600
- 601
- 702
- 800
- 900
- 1101
- 1102 T1
- 1103 T3
- 1104
- 1107
- 1300
- 1401
- 1402
- 1403

2-4

S.W. CORNER  
JOHN NICHOLS  
DLC NO. 48

S.E. CORNER  
JOHN NICHOLS  
DLC NO. 48

S.W. CORNER  
NICHOLAS LEE  
DLC NO. 60

S.E. CORNER  
MITCHELL P. GILLIAM  
DLC NO. 71

701  
16.38 AC.  
PT. PARCEL 1

703  
53.18 AC.  
PT. PARCEL 3

700  
40.00 AC.  
PARCEL 1

1200  
Parcel 1  
40.00 AC

1202  
Parcel 2  
40.00 AC

403  
15.96 AC

LOT 3 - 76.24 AC

402  
18.84 AC

LOT 2 - 16.30 AC

300  
42.86 AC

501  
47.41 AC

401  
8.86 AC

201  
27.83 AC

200  
56.21 AC

100  
23.59 AC

1108  
17.83 AC

1100  
22.67 AC

1102  
13.88 AC

1106  
12.00 AC

1105  
13.04 AC

1103  
11.00 AC

1001  
10.93 AC

1000  
10.73 AC

802  
4.00 AC

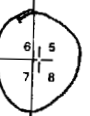
1400  
40.83 AC  
Lot 2

803  
4.50 AC

1201  
13.84 AC

OLD CO.  
ROAD

LIBERTY



See Map 8.5.8