

SE/NE 0.75 Ac
 NE/SE 20.5 Ac
 NW/SE 1.5 Ac
 SE/SE 0.65 Ac

TOTAL 23.40 ACRES
 PRIMARY

RECEIVED
 MAR 23 2005
 WAT. RESOURCES DEPT.
 SALEM, OREGON

RECEIVED
 MAR 23 2005
 WATER RESOURCES DEPT.
 SALEM, OREGON

app # R 86211

17134514
 Assessor SCPLG

LEGEND
 1" = 800 Feet

LINE TYPES

TAX LOT BOUNDARY OLD PROPERTY LINE
 ROAD RIGHT-OF-WAY VACATED RIGHT-OF-WAY
 RAILROAD RAILROAD RIGHT-OF-WAY
 STREAM LAKE, ETC. TAX LOT BOUNDARY STREAM LAKE, ETC. MAP BOUNDARY
 SUBDIVISION BOUNDARY PARTITION PLAT BUY.
 TAX CODE BOUNDARY EASEMENT

SYMBOL TYPES

ALC
 CONTROL POINT
 SURVEY MONUMENTS
 U.S.A. CORNER
 SECTION 1/4 SEC 1/8 SEC 1/16 SEC

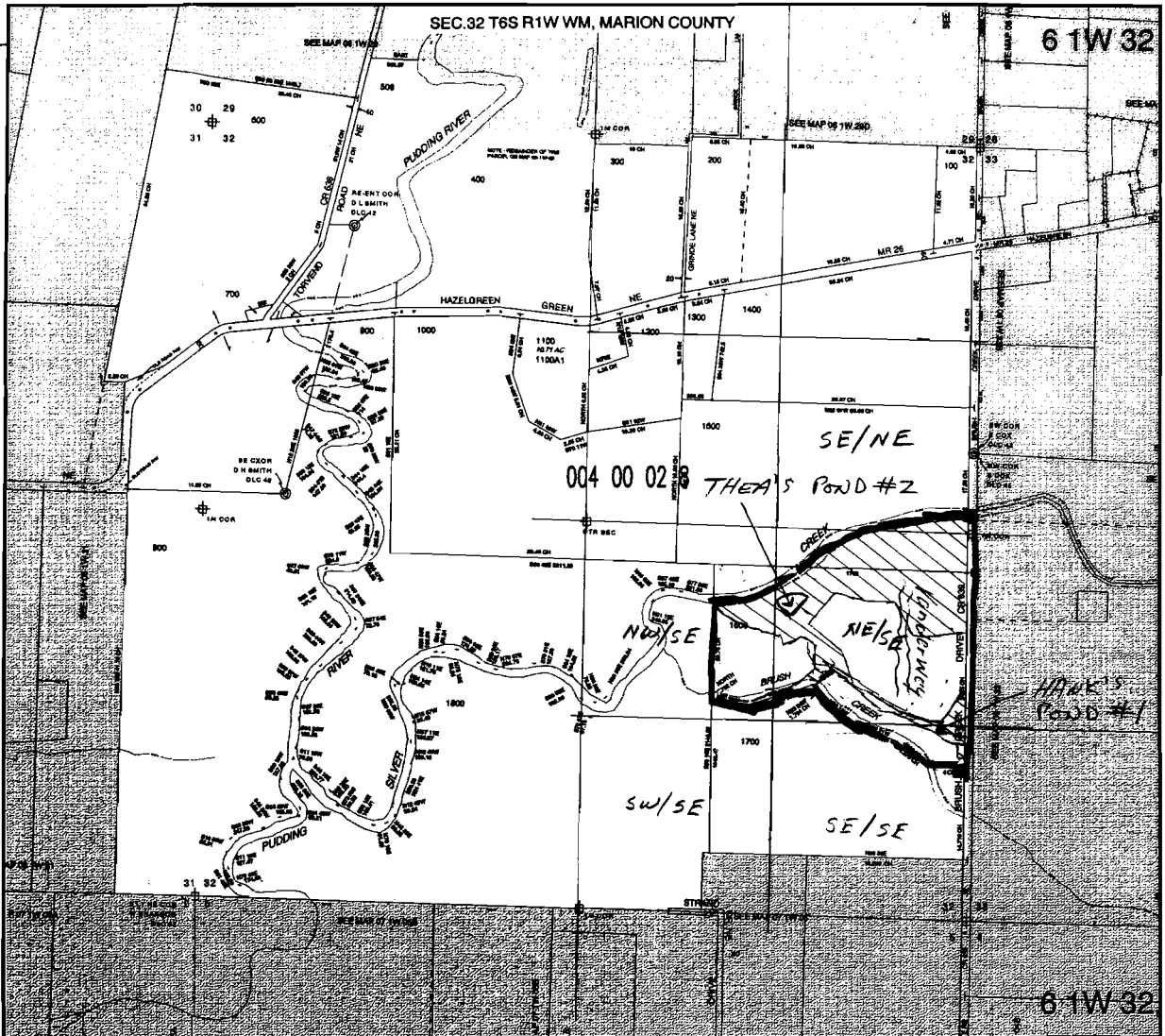
NUMBERS
 TAX CODE NO.
 000 00 00 0

ACRES - ALL ACRES INCLUDE ANY FUTURE THAT MAY BE WITHIN THE BOUNDARY PUBLIC RIGHT OF WAY.
 TICK MARKS - WHEN A TICK MARK IS SHOWN ON THE EXTENSION OF A LINE, THE BOUNDARY LINE IS TO THE TICK MARK, USUALLY THIS IS USED WHEN BOUNDARIES DO NOT FOLLOW EXACTLY TO THE MARK.
 DIMENSIONS ARE USED WITH DIMENSIONS IN AREAS OF GREATER COMPLEXITY.

NOTICE: This map was created for Assessor's Office use ONLY.



SCALE 1" = 800'
 or 1" = 400' of 1:4000
 Plot file created: December 09, 2003



THEA'S POND #2 NE 1/4 SE 1/4
 LOCATED FROM SE CORNER
 SECTION 32
 2120 FE NORTH
 1200 FE WEST

HANK'S POND #1
 POND MEASURED FROM
 SE CORNER SECTION 32
 1640 FE NORTH
 1000 FE WEST