

T. 4S., R. 1E. W.M. Sections 18 & 19

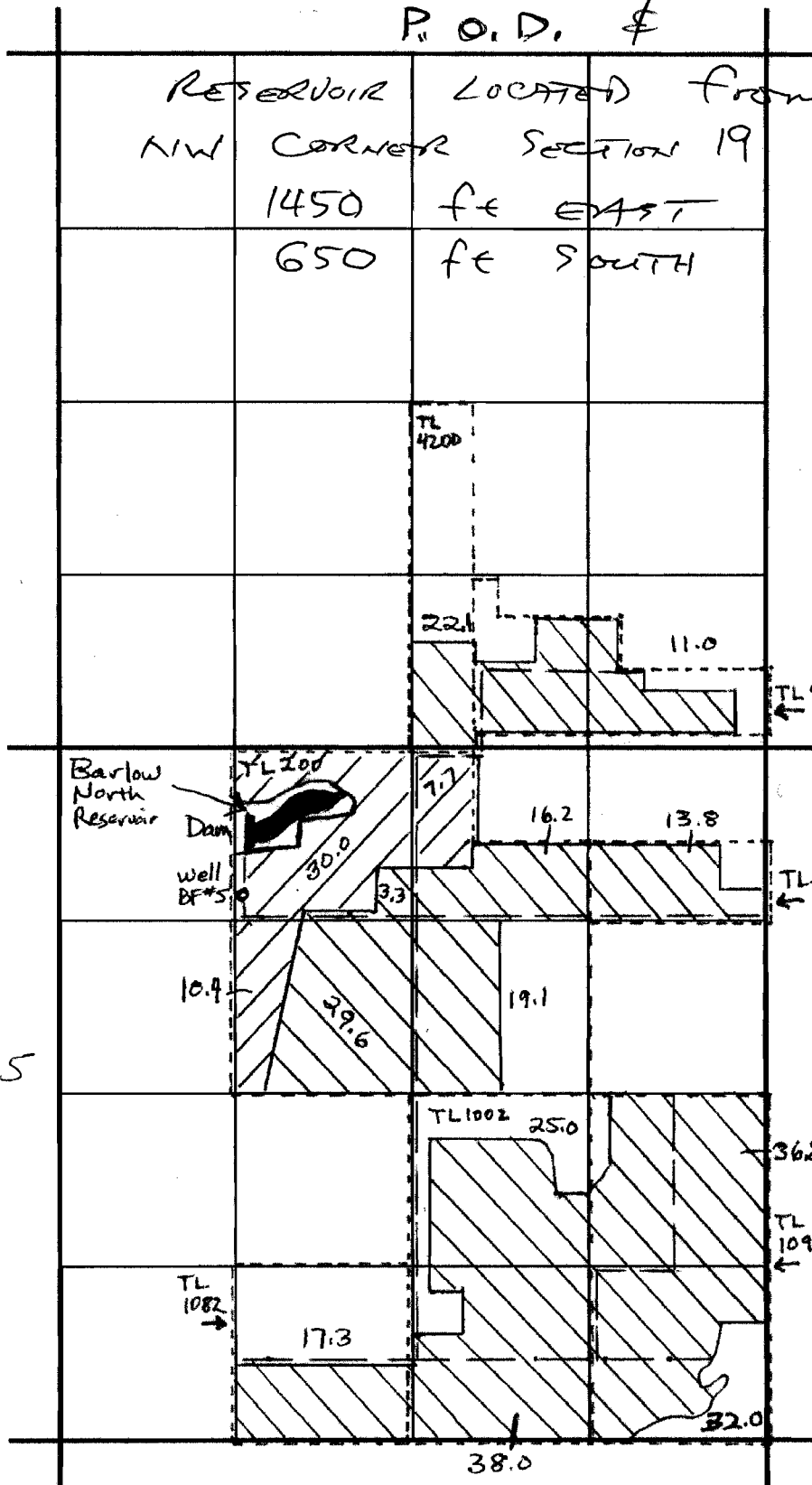
WORK
COPY

P. O. D. \$



RESERVOIR LOCATED FROM
NW CORNER SECTION 19
1450 FE EAST
650 FE SOUTH

RECEIVED
APR 26 2005
WATER RESOURCES DEPT
SALEM, OREGON



app# R 86275

J. Frank Schmidt & Son Co. Surface Water Application

Clackamas County, Willamette Basin

Scale 1" = 1320'