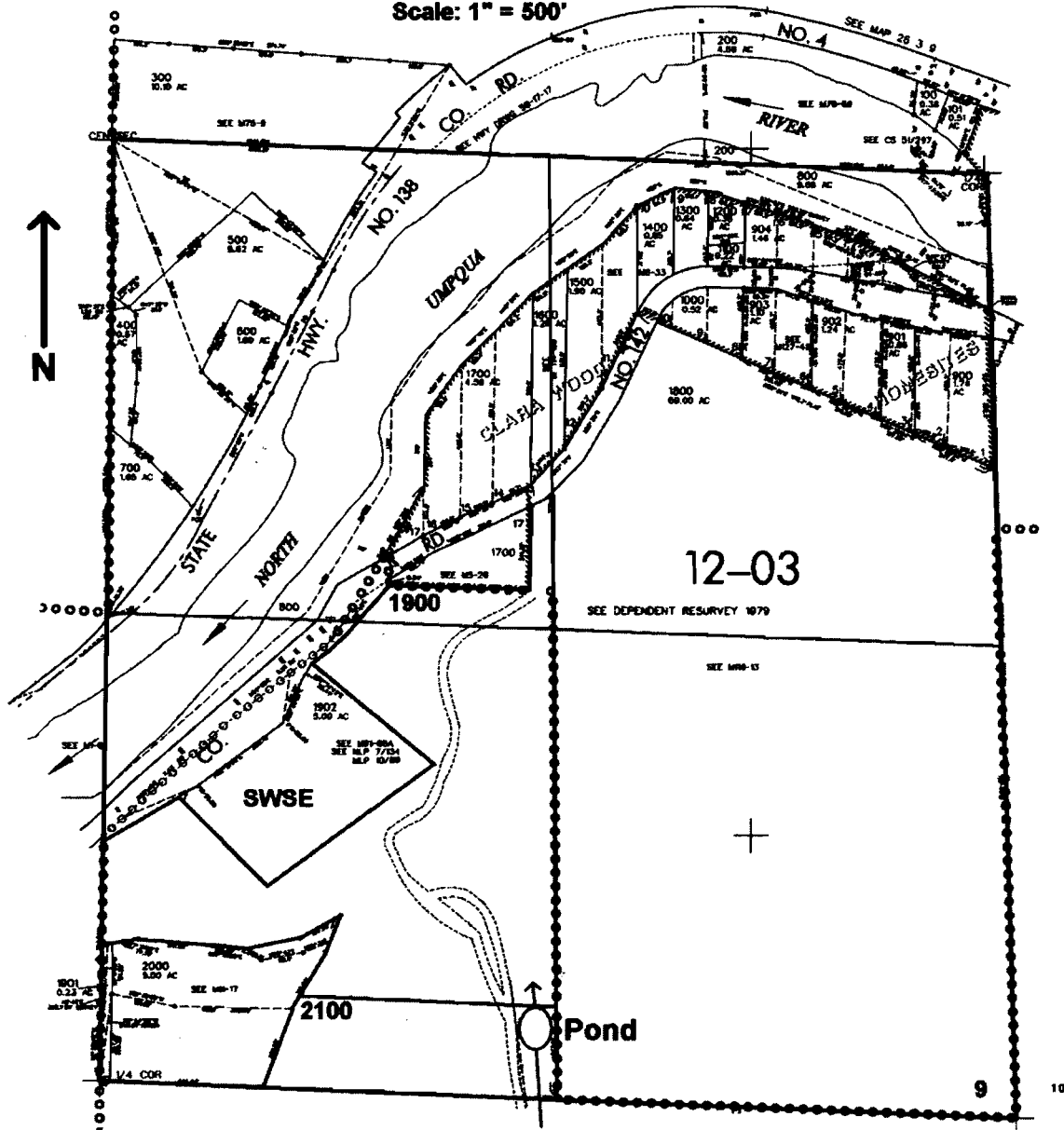


SE 1/4 SEC. 9 T.26S. R. 3W W.M.  
 DOUGLAS COUNTY  
 Scale: 1" = 500'



Pond is located at 250 ft. N. and 1330 ft. W. from the SE corner of Sec. 9

app # R 86266

**RECEIVED**  
 APR 19 2005  
 WATER RESOURCES DEPT  
 SALEM, OREGON