

This map shows existing pond and proposed pond expansion

SECT 33 T.31S. R.15W. W.M.  
CURRY COUNTY

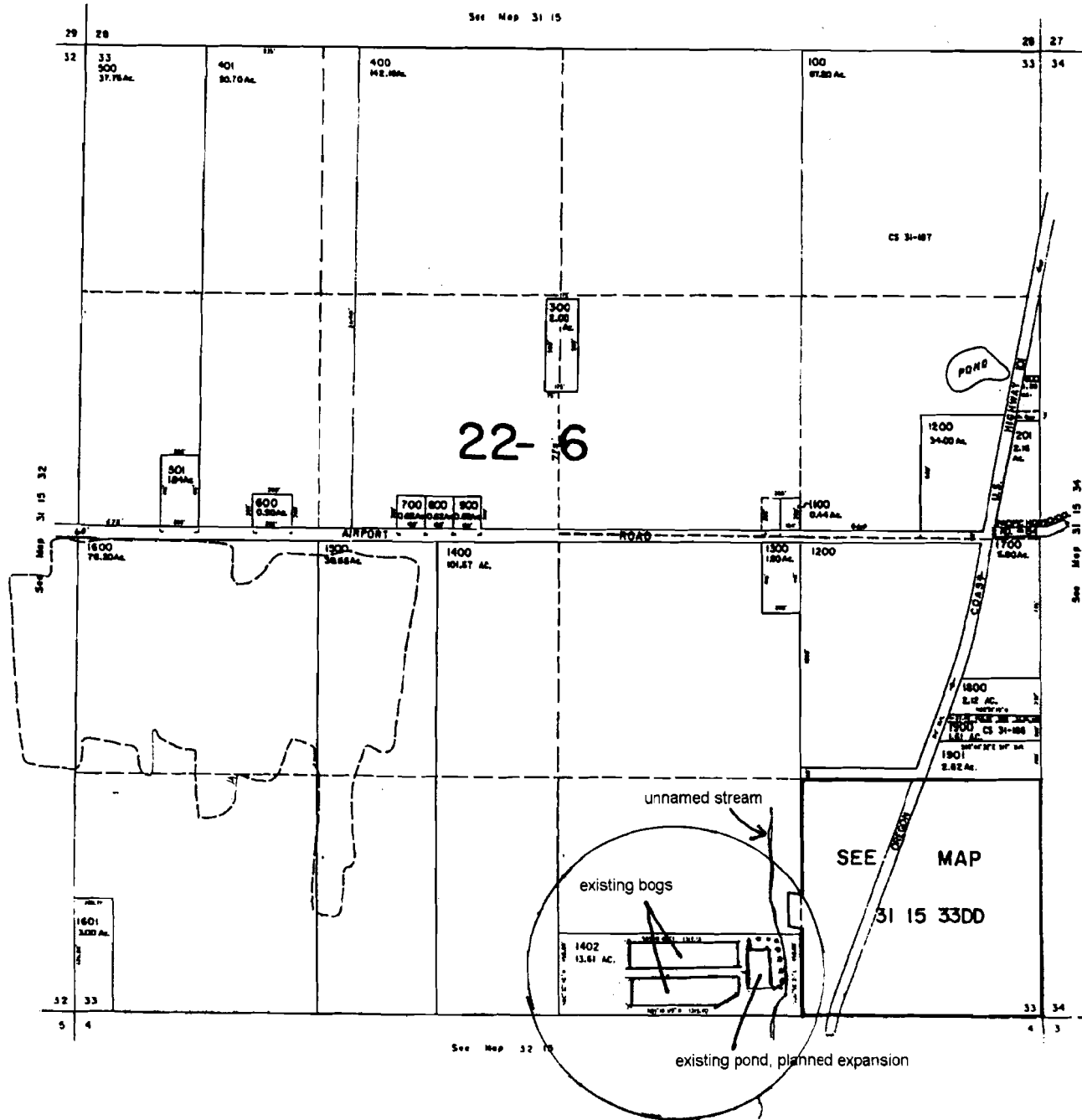
15 33

Pond location: SW1/4 SE1/4, SECTION 33, T 31 S, R 15 W, W.M.  
355 FEET NORTH AND 1400 FEET WEST FROM  
THE SOUTHEAST CORNER OF SECTION 33.



1" = 800'

app # R 86310



31 15 33

Revised 7/22/99. RA