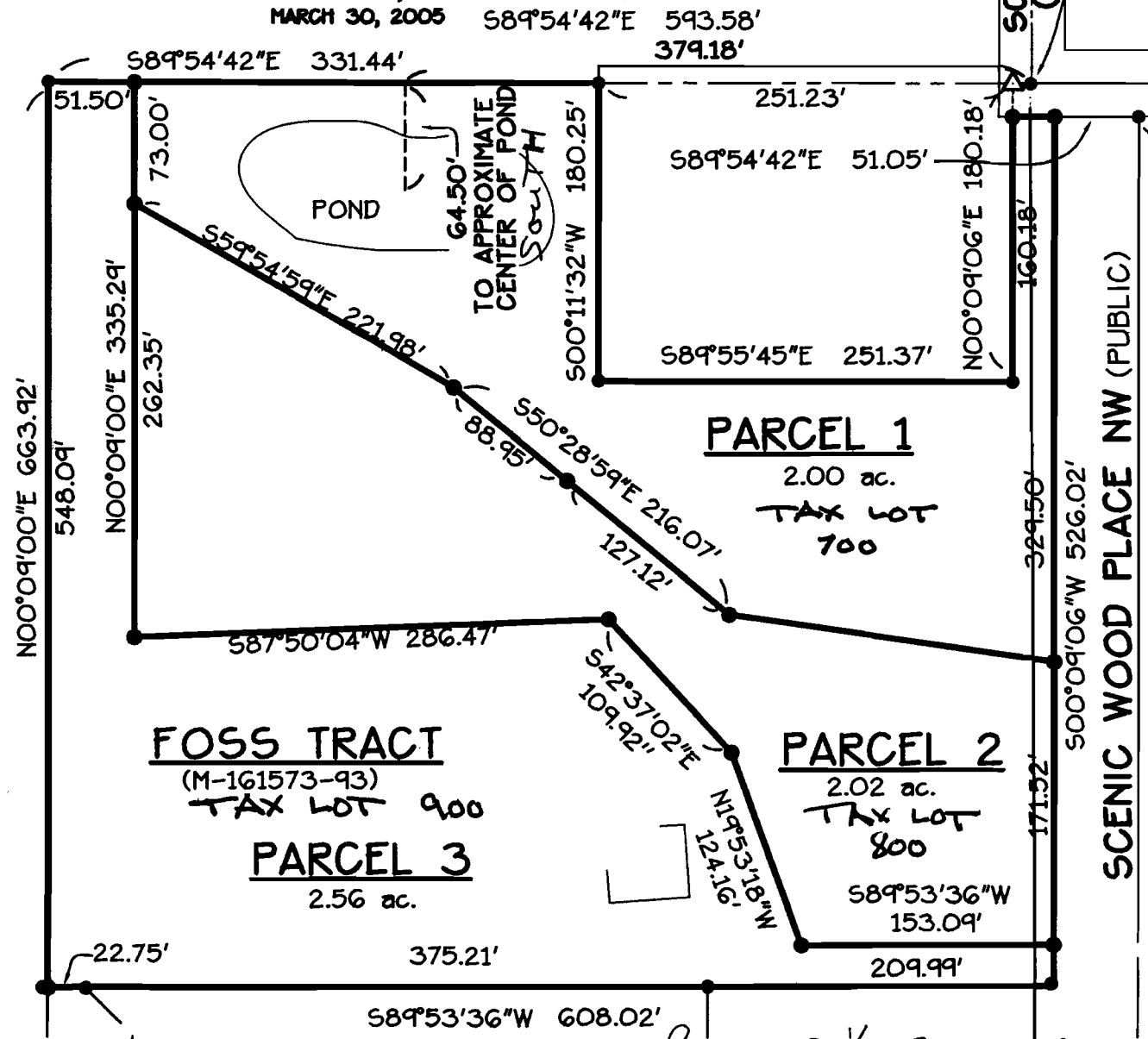
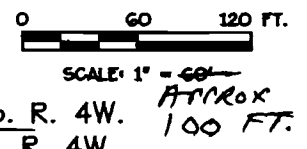


WORK COPY  
Scale approx.  
1" = 100 ft.

**POND EXHIBIT**  
FOR  
**ROBERT H. AND DELORES I. FOSS**

LOCATED IN  
NW 1/4 OF SEC. 2, T. 11 S., R. 4 W., W.M.  
BENTON COUNTY, OREGON  
MARCH 30, 2005

S. 1/4 COR. SEC. 35  
T. 10 S., R. 4 W.  
FD. 5/8" I.R. W/YPC STAMPED  
"BENTON COUNTY SURVEYOR"  
IN MON. BOX PER.  
RESTORATION No. 3156.  
HELD.



T. 10S. R. 4W.  
T. 11S. R. 4W.

- LEGEND:**
- FD. MONUMENT
  - △ CALCULATED POINT

app # R86252

RECEIVED

APR 04 2005

WATER RESOURCES DEPT.  
SALEM, OREGON

WATER RESOURCES DEPT.  
SALEM, OREGON

APR 11 2005

RECEIVED

Date: 3/30/2005 Time: 16:55  
Scale: 1=60(P5)  
File: dwg\2004\04-71\71-Pond.dwg (Britan E)



**K & D ENGINEERING, Inc.**  
276 N.W. Hickory Street P.O. Box 725  
Albany, Oregon 97321  
(541) 928-2689

380 FEET WEST FROM S 1/4 CORNER SECTION 35