

SEC. 14 T.32S. R.5 W. W.M.
DOUGLAS COUNTY

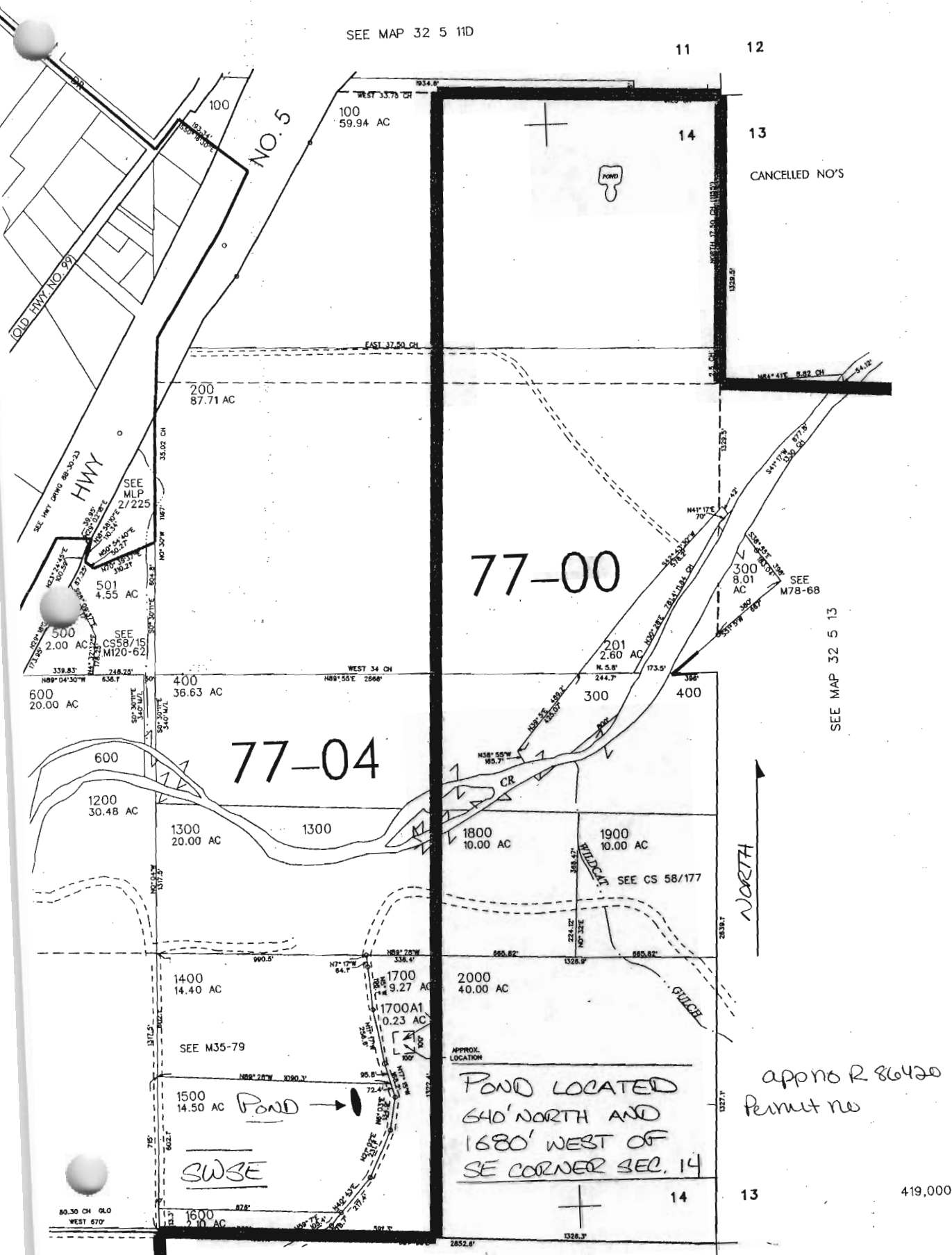
1" = 400'

REVISED ON
7-24-01

32 5 14
& INDEX

SEE MAP 32 5 11D

11 12



CANCELLED NO'S

77-00

77-04

POND LOCATED
640' NORTH AND
1680' WEST OF
SE CORNER SEC. 14

NORTH

SEE MAP 32 5 13

appno R 86420
Permit no

419,000