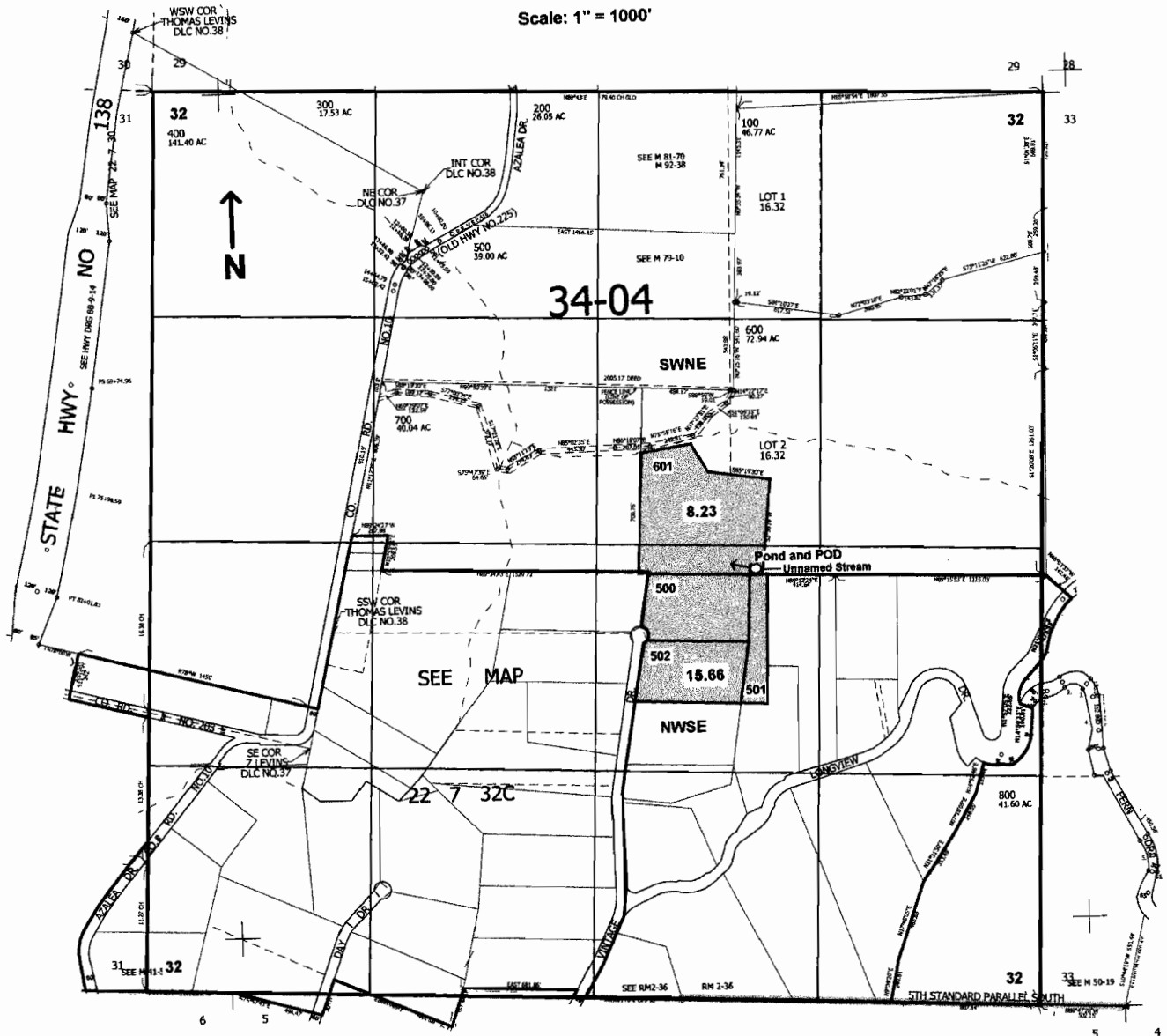


SEC.32 T.22S. R.7W. W.M.  
DOUGLAS COUNTY

Scale: 1" = 1000'



Pond ( Dam ) and POD located 130 ft. S. and 920 ft. E. from the center of Sec. 32

RECEIVED

OCT 04 2005

WATER RESOURCES DEPT  
SALEM, OREGON

app no R 86432