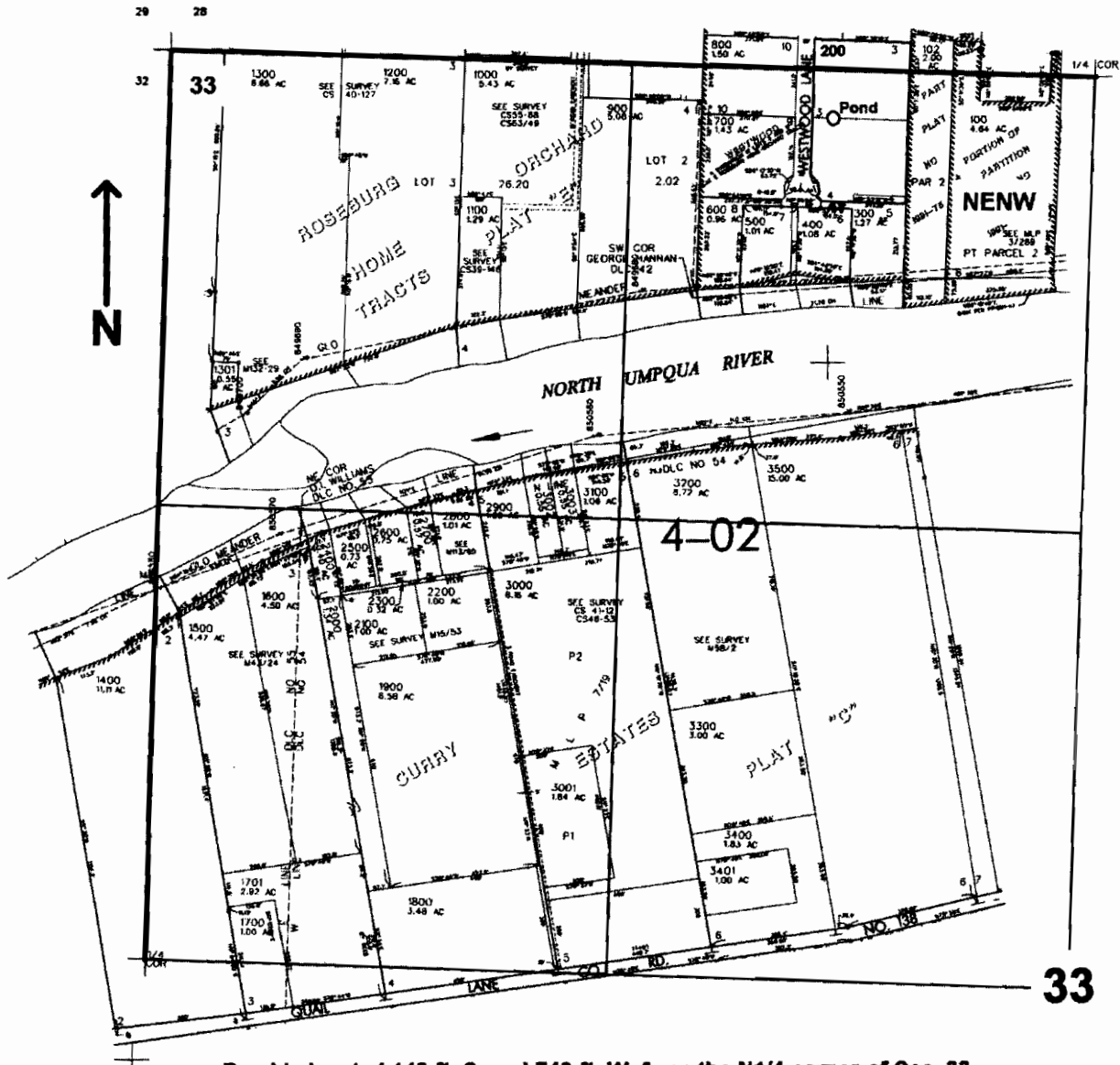


NW/4 SEC. 33 T.26S. R.6 W W.M.
DOUGLAS COUNTY

Scale: 1" = 500'



Pond is located 140 ft. S. and 740 ft. W. from the N1/4 corner of Sec. 33

RECEIVED
NOV 10 2005
WATER RESOURCES DEPT
SALEM, OREGON

0 81.453