

**IMPORTANT**  
This Map for Assessment  
and Taxation Purposes  
ONLY

**SEC.17 T6S R5W WM**  
**POLK COUNTY**  
Scale 1" = 400'

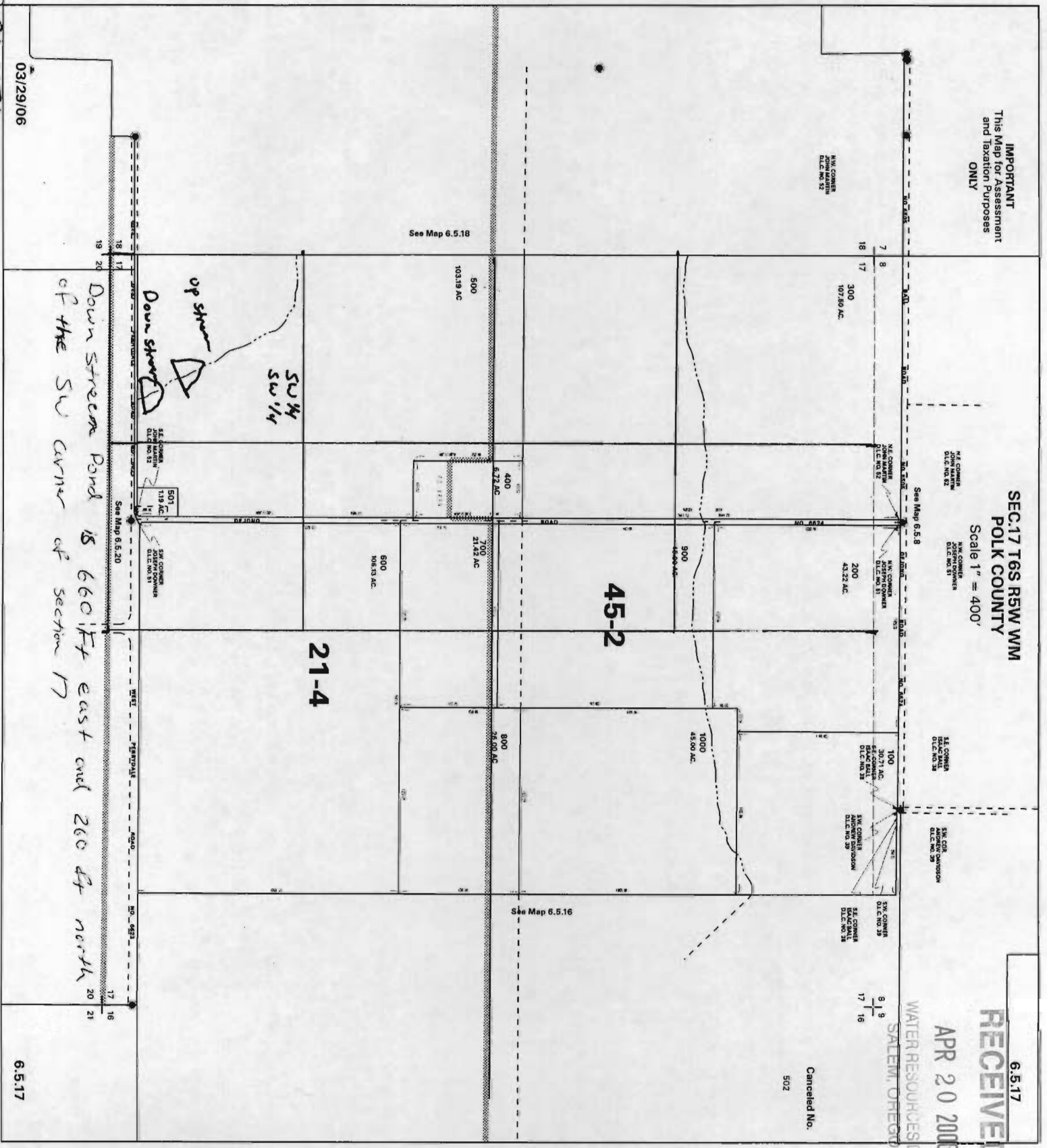
6.5.17

**RECEIVED**

APR 20 2006

WATER RESOURCES DEPT  
SALEM, OREGON

Cancelled No.  
502



approx 86576

03/29/06

Down stream Pond is 660 ft east end 260 ft north  
of the SW corner of section 17

6.5.17

