

ON 27 T.33S. R.6W. W. M.
EPHINE COUNTY

1" = 400' SCALE



335-611-27

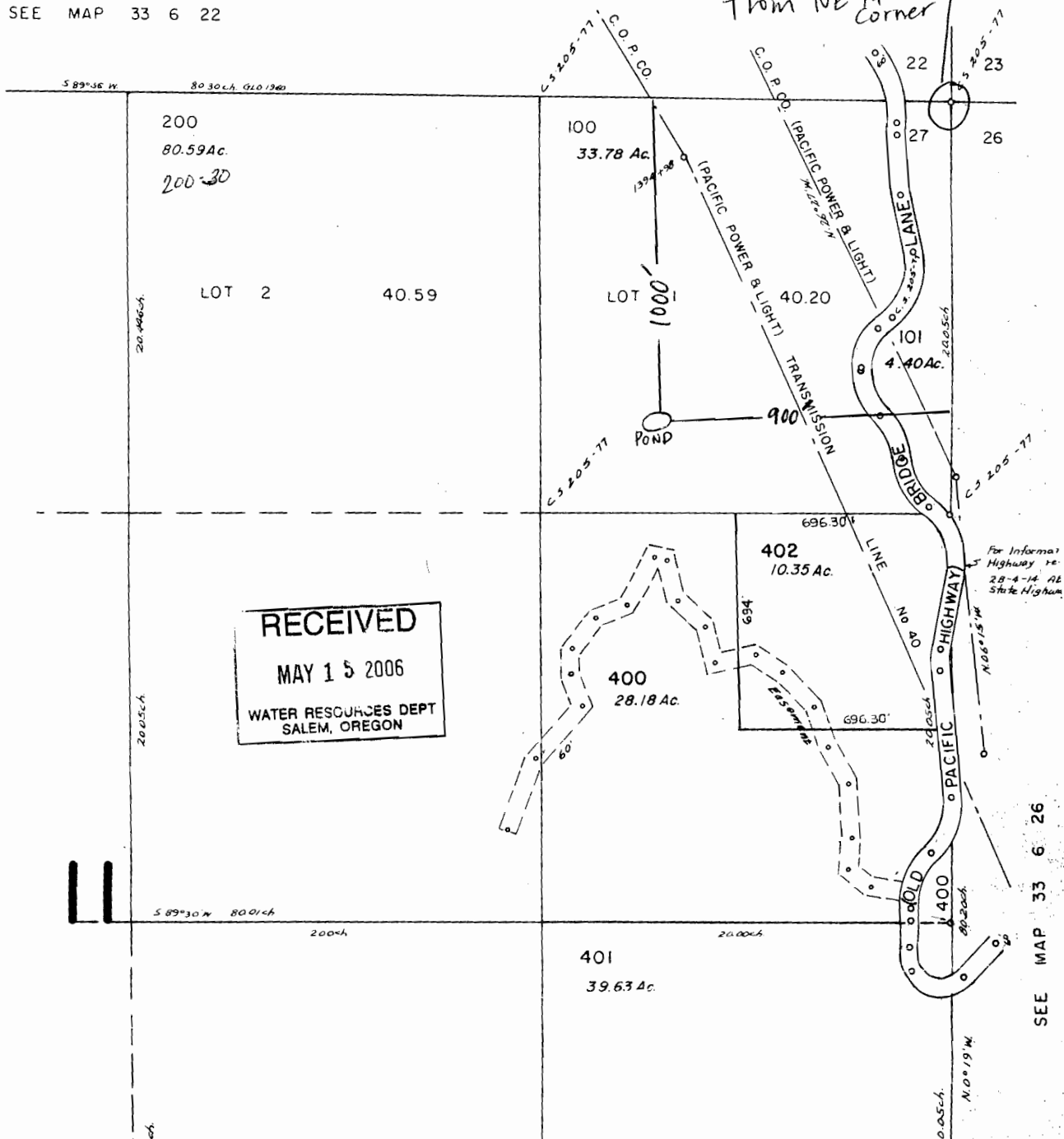
Josephine County

Blossom Bar Pond

1000' South
900' West
from NE 1/4
Corner

NE 1/4
Section 27

SEE MAP 33 6 22



RECEIVED
MAY 15 2006
WATER RESOURCES DEPT
SALEM, OREGON

SEE MAP 33 6 26