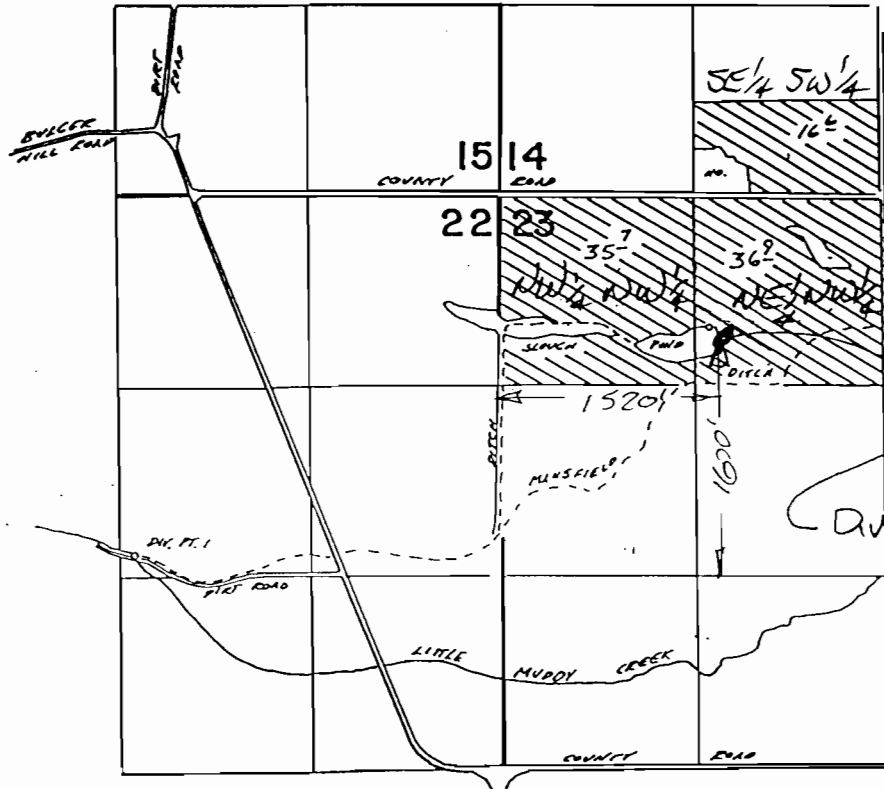


T. 7S., R. 38E., W.M.



T.L.# 4000

QUESTION POINT

DIV. PT. 1 LOCATED 2470' S. & 2540' W. FROM NE COR. SEC. 22

DIV. PT. 2 LOCATED 890' S. & 1400' E. FROM NW COR. SEC. 23

SCALE: 4" = 1 MILE

APPLICATION MAP FOR STORAGE IN

STEPHEN'S FAMILY RESERVOIR

RICHARD D. STEPHENS  
14900 N. ROCK CR ROAD  
HAINES, OR 97833

RECEIVED

APR 07 2006

WATER RESOURCES DEPT  
SALEM, OREGON

April 4, 2006

277P

APPX R 86570