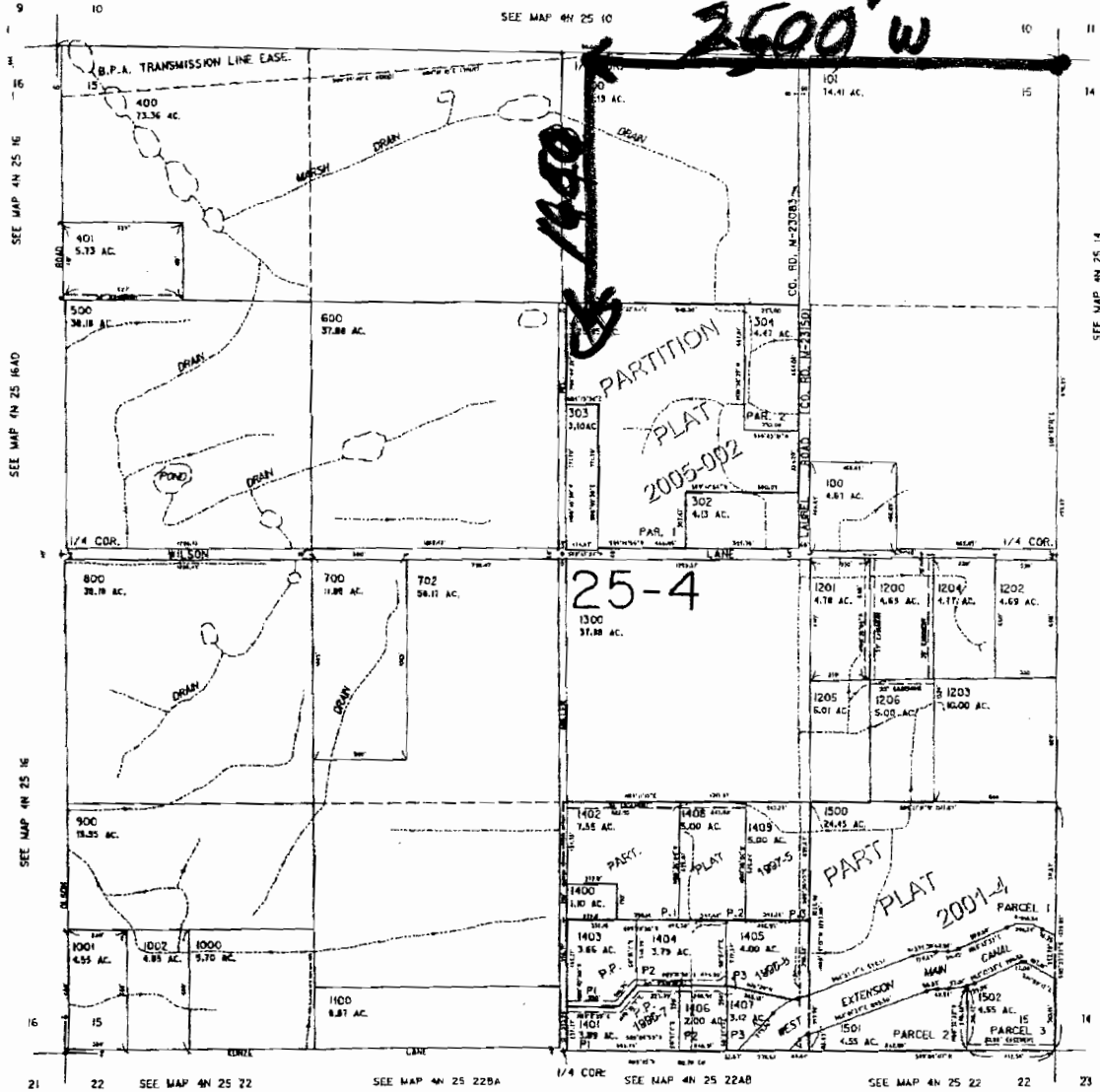
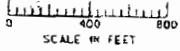


THIS MAP WAS PREPARED FOR
ASSESSMENT PURPOSE ONLY

SECTION 15 T.4N. R.25E. W.M.
MORROW COUNTY

4N 25 15



CORRECTED
SCALE
@ APPROX
1" = 1000 FT

RECEIVED
OCT 04 2005
WATER RESOURCES DEPT
SALEM, OREGON

Revised
8/5/2005, DLW
4N 25 15

POND LOCATED FROM
NE CORNER SECT 15
1440 FT SOUTH
& 2500 FT WEST

appno R 86431