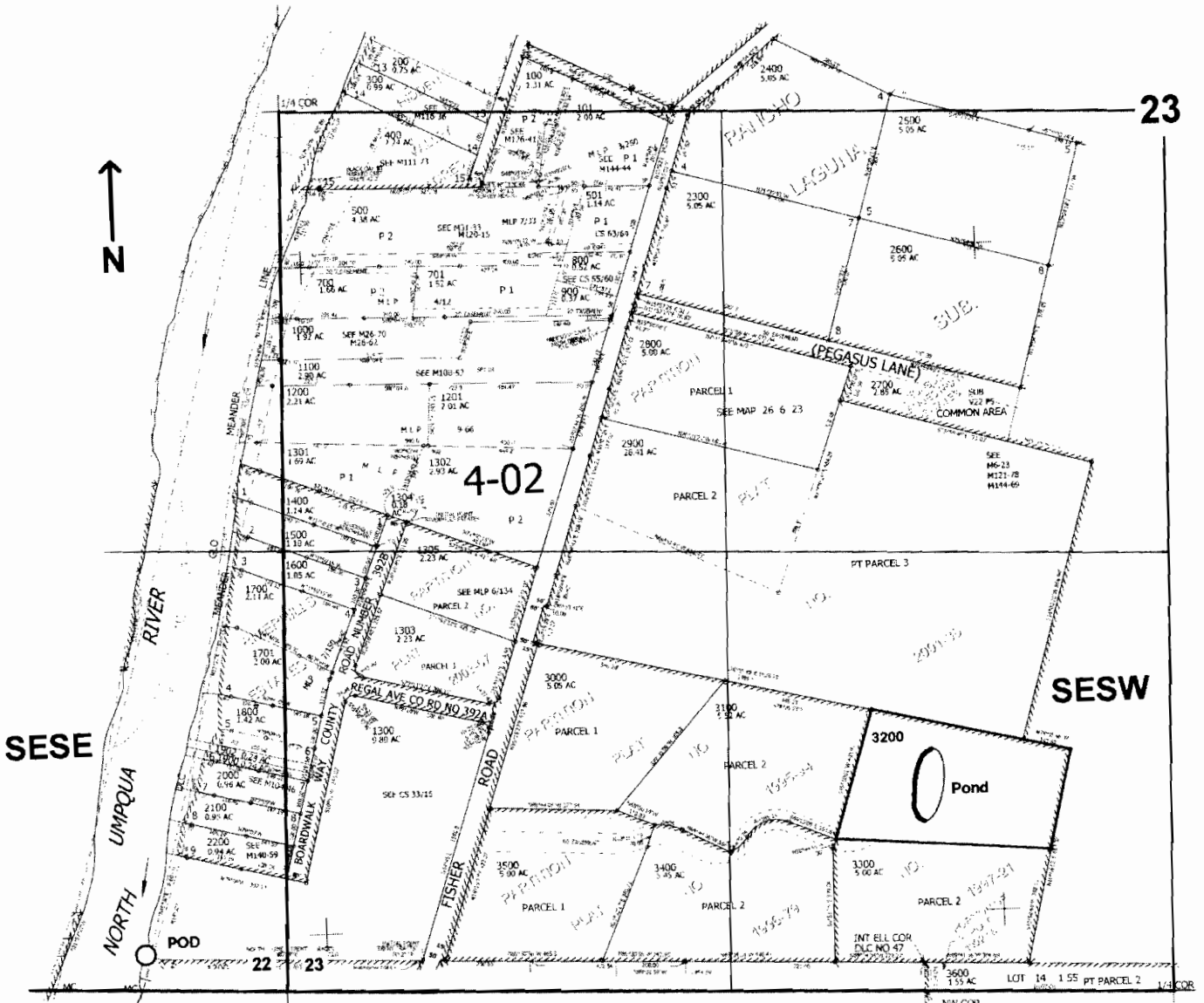


T.26S. R.6W. W.M.
DOUGLAS COUNTY

Scale: 1" = 500'



POD is located 100 ft. N. and 420 ft. W. } from the SW corner of Sec. 23
Dam is located 620 ft. N. and 1870 ft. E. }

RECEIVED
MAY 01 2006
WATER RESOURCES DEPT
SALEM, OREGON

appno R 86556