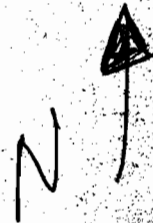


37s-6w-6-3

SCALE 1" = 200'

1600  
1500  
1890  
1801  
800  
2190



N0°13'40"W

SEE MAP 36 6 6

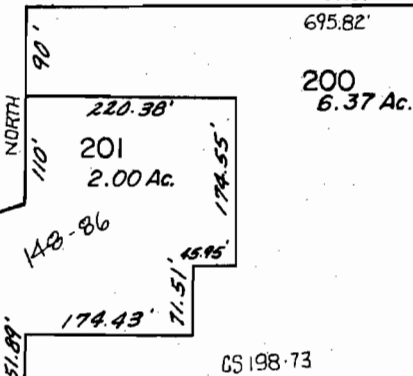
1288.17'

445' M/L SOUTH

WEST BELL TELE. RISER 850

N 72°00'E 300'

CS 148-86



192.70' 51.89'

174.43'

71.51'

CS 198-73

860' M/L WEST

232.40'

101.15'

50'

514°33'52"W 101.15'

512°28'W 443.61'

522°07'W 148.45'

551°56'W 150.39'

512°28'W 121.55'

499.51'

1800 3.40 AC

1900 0.25 AC

2000 1.90 AC

CS 151-66 CS 210-66

323.35'

185.73'

1298.88'

T 2100 36.14 AC

2190 286.95' 496.38'

496' M/L

40'

500'

T 2100 SW 1/4 SE 1/4

210 1.21 AC

210'

90'

1288.17' M. DEILDON

1288.17'

40'

1288.17'

1288.17'

1288.17'

1288.17'

1288.17'

1288.17'

1288.17'

1288.17'

1288.17'

1288.17'

1288.17'

1288.17'

1288.17'

1288.17'

1288.17'

1288.17'

1288.17'

1288.17'

RECEIVED JUN 26 2006 WASH. GEOLOGICAL DEPT. OREGON

SW 1/4 CORNER SECTION 6

1/4 COR.

N 89°55'E

37 6 6

App No R-86625