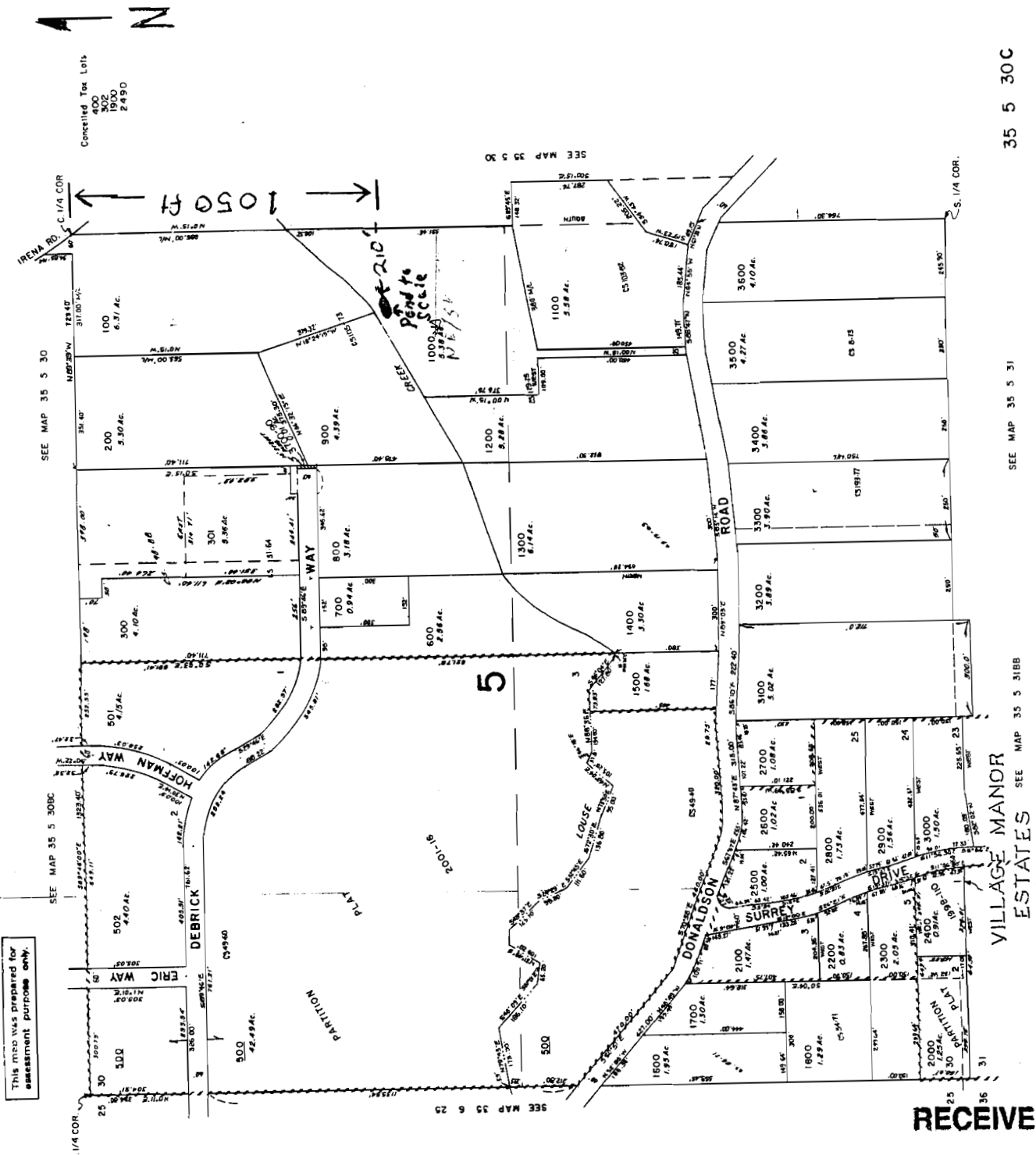


The Pond is located as follows:
 NE 1/4 SW 1/4, Section 30, T35S, R5W, W.M.
 1050 Feet South and 210 Feet West From
 The Center 1/4 Corner of Section 30



RECEIVED

MAY 19 2006

WATER RESOURCES DEPT
 SALEM, OREGON

app no R 86602

35 5 30C

SEE MAP 35 5 31

SEE MAP 35 5 31B

VILLAGE MANOR
 ESTATES

This map was prepared for
 assessment purposes only.

Cancelled Tax Lots
 400
 302
 1900
 2490