

WATER RESOURCES SALEM, OREGO
OCT 3 4 20
RECEIVE

agreed with Trip Franklyn
to tails -

sent 10-30-06
n.t. included: (w/lf + trip)
pg 3 of 4

Revised Corrected
Adjusted State
1" = 300 FEET
Deepest part 7' from small amt is max deep
most is 5' + under

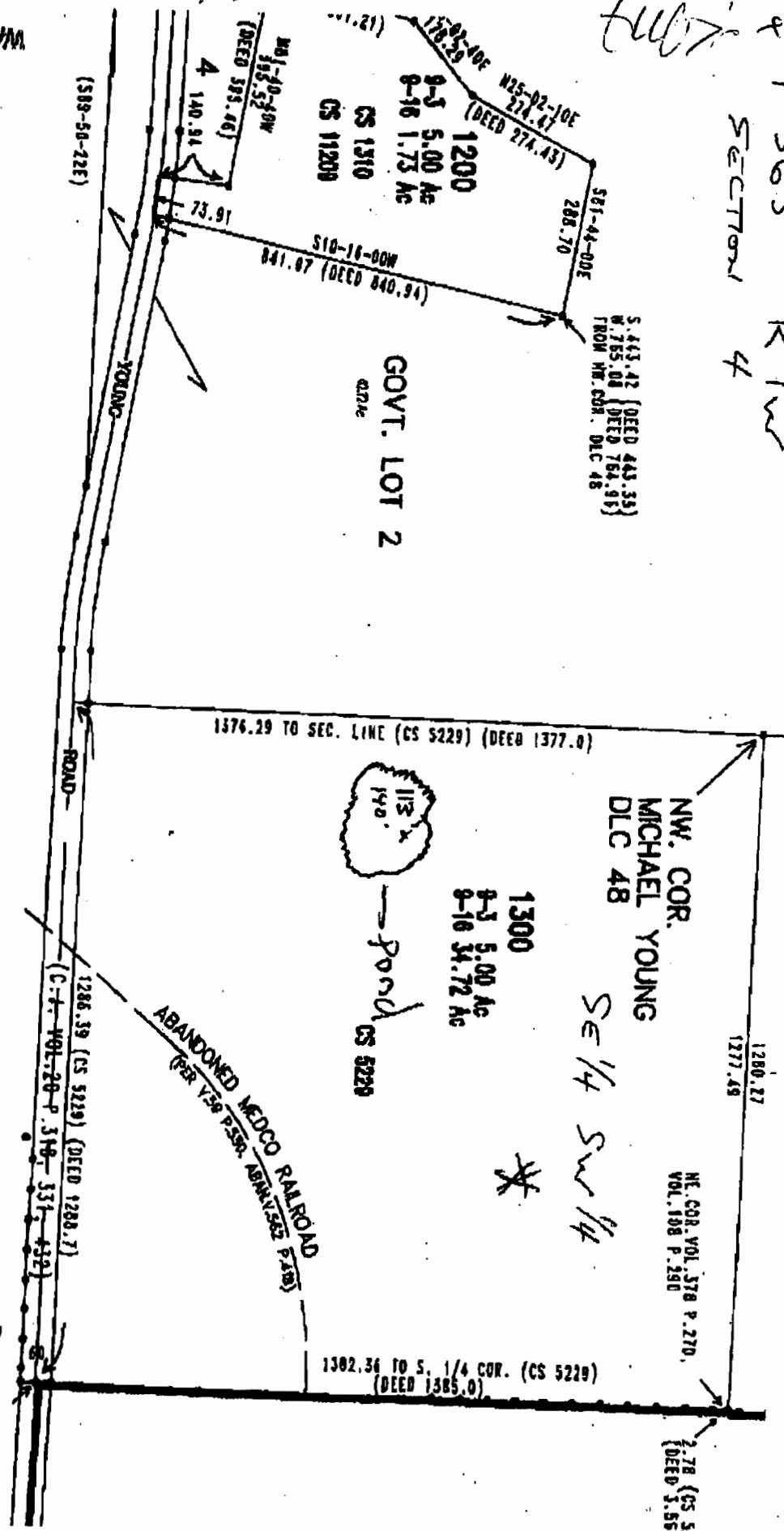
T.36S. R.1W, W.4.

Section 4

1" = 300'

WORK
COPY

T36S R1W
SECTION 4



POND LOANED FROM SOUTH 1/4 CORNER
G30 ft NORTH & 1120 ft WEST
South 1/4 CORNER

app no R 86711