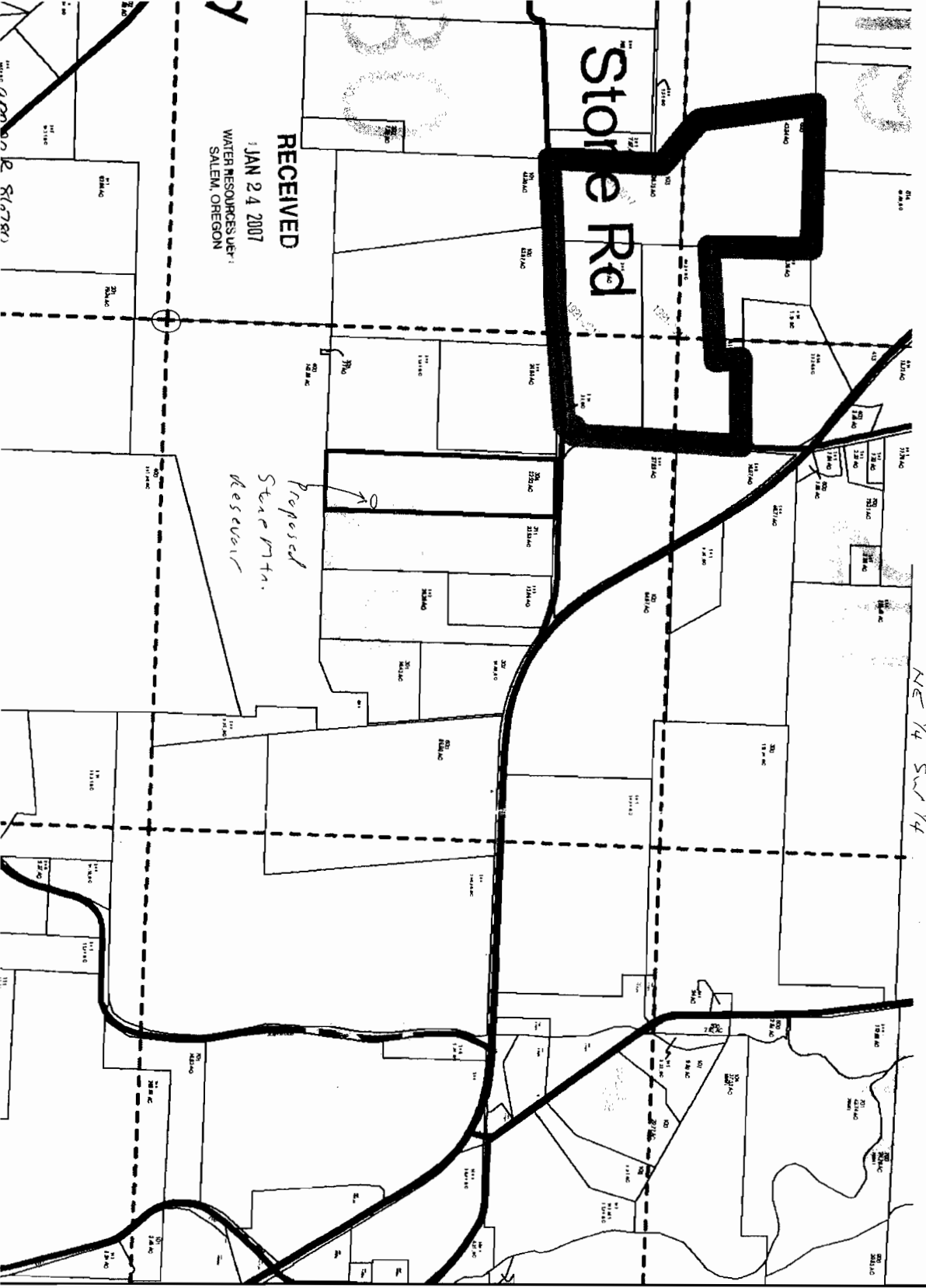


Township 6 South, Range 6 West, Section 29, Tax lot 304

CENTER OF RESERVOIR LOCATED FROM SW CORNER  
2200 FE ALONG E 1800 FE EAST  
NE 1/4 SW 1/4



RECEIVED  
JAN 24 2007  
WATER RESOURCES DEPT.  
SALEM, OREGON

Proposed  
Scarpmtn.  
Reservoir

Polk County Map

6.6.29

- County
- Railroad
- Roads
- STATEHWY
- CO-PAVED
- CO-GRAVEL
- Section
- Subdivision
- taxlot06
- Taxlot Arrow06
- Taxlot Boundary2
- taxlot06
- Taxlot07
- Taxlot Arrow07
- Taxlot Boundary3
- taxlot07
- Updates

ADJUSTED AREA  
SCALE 1" = 1000 FT.

