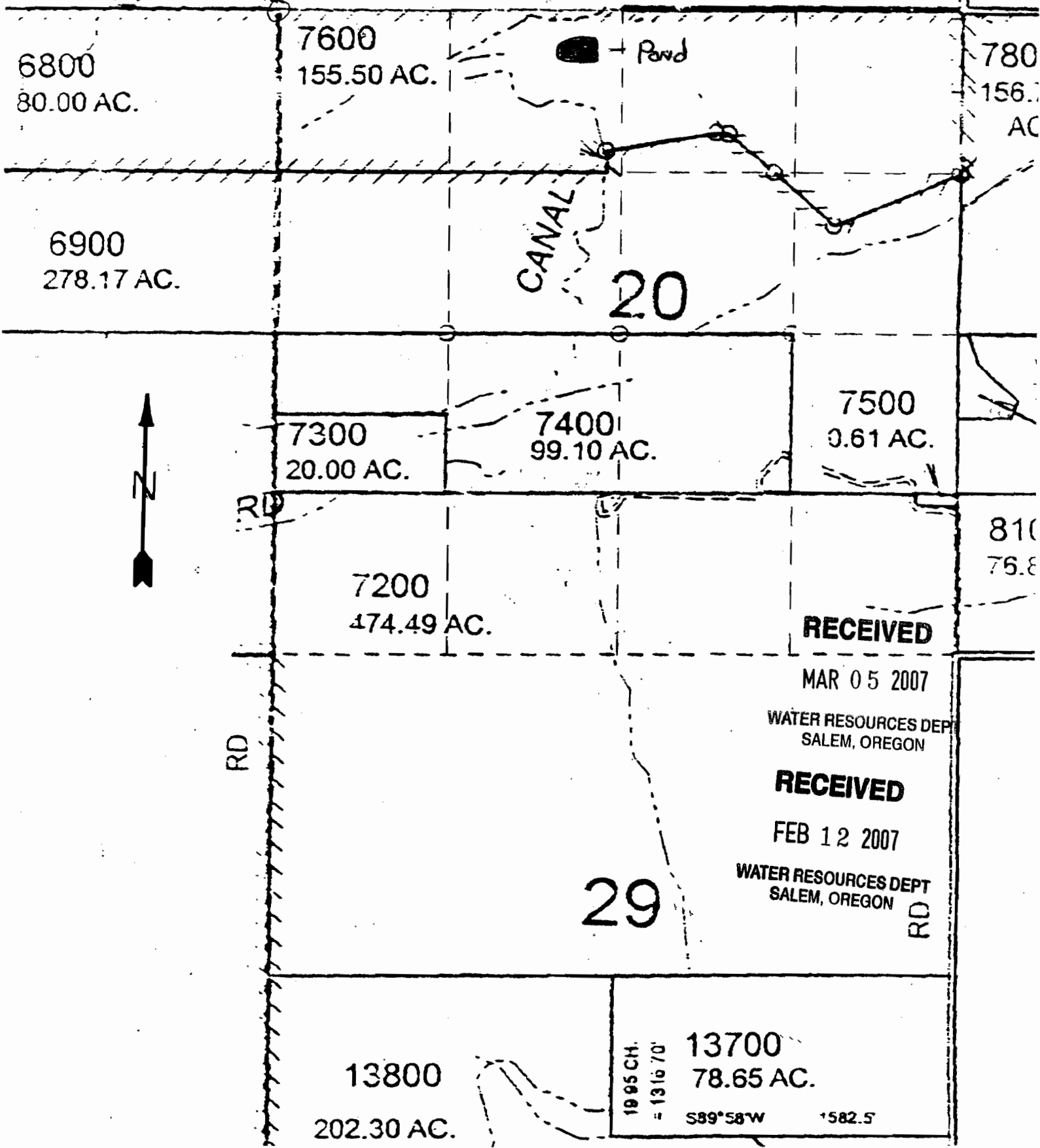


K86777
R 14446

SW1/4 T.16S. R.47E. W.M. MALHEUR COUNTY

1" = 1000'

2420' EAST 275' South
off NW CORNER Sec. 20



6800
80.00 AC.

7600
155.50 AC.

7800
156.00 AC

6900
278.17 AC.

CANAL
20

Pond

7300
20.00 AC.

7400
99.10 AC.

7500
0.61 AC.



RD

7200
174.49 AC.

8100
75.80 AC

RECEIVED

MAR 05 2007

WATER RESOURCES DEPT
SALEM, OREGON

RECEIVED

FEB 12 2007

WATER RESOURCES DEPT
SALEM, OREGON

RD

29

RD

13800
202.30 AC.

1995 CH.
= 1316.70'

13700
78.65 AC.

589°58'W 1582.5'