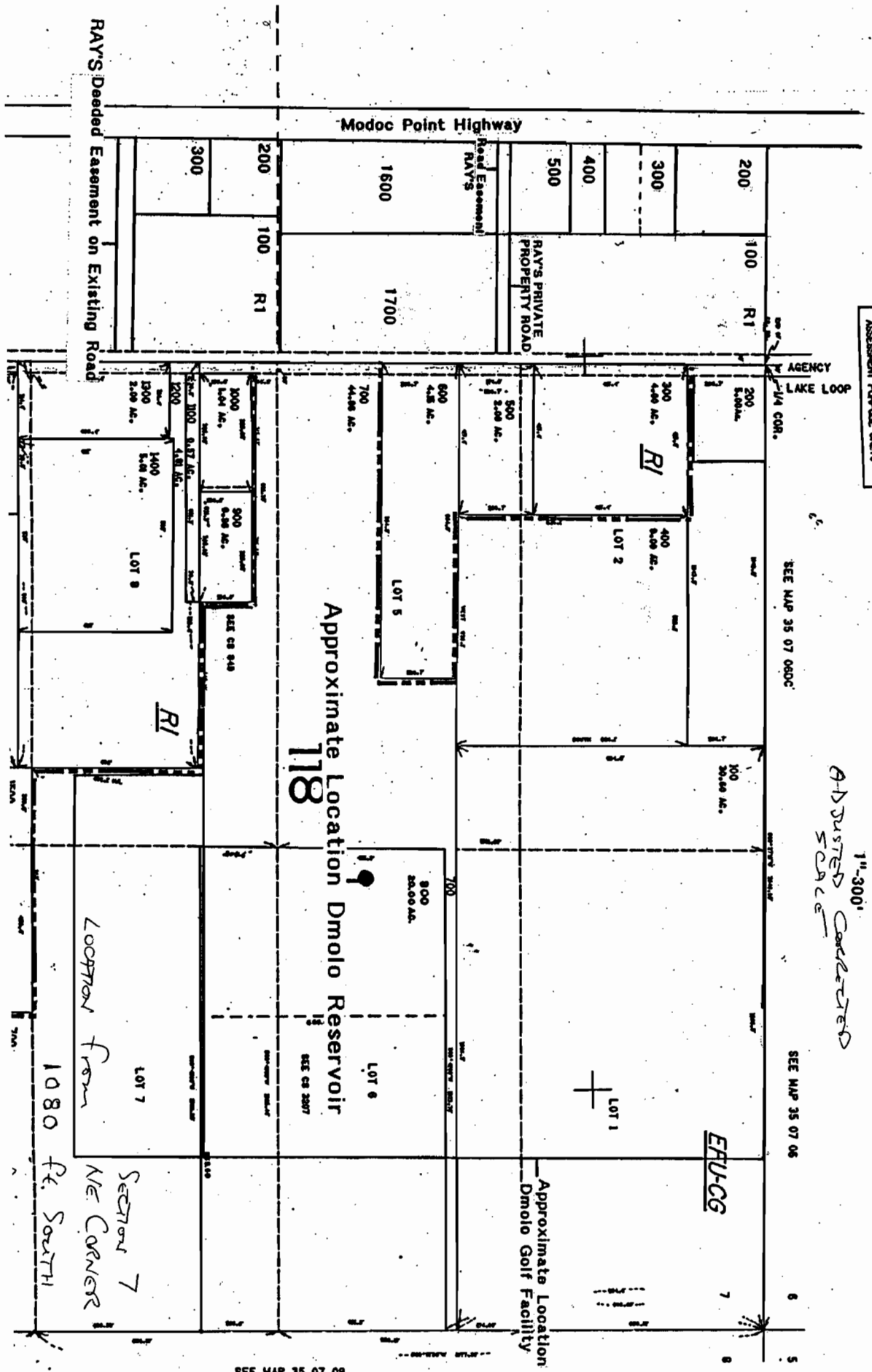


THIS MAP WAS PREPARED FOR ASSESSMENT PURPOSE ONLY.

NE1/4 SEC. 07 T.35S. R.07E. W.M. WORK COPY
KLAMATH COUNTY

1"=300'
ADDUSTED CORRECTED SCALE



SEE MAP 35 07 08

JAN 31 2007

ADDMR 86785

TOWNSHIP 35 SOUTH, RANGE 7 EAST, W. M.

Owner # 37, Property # 1
OWRD Claim # 265

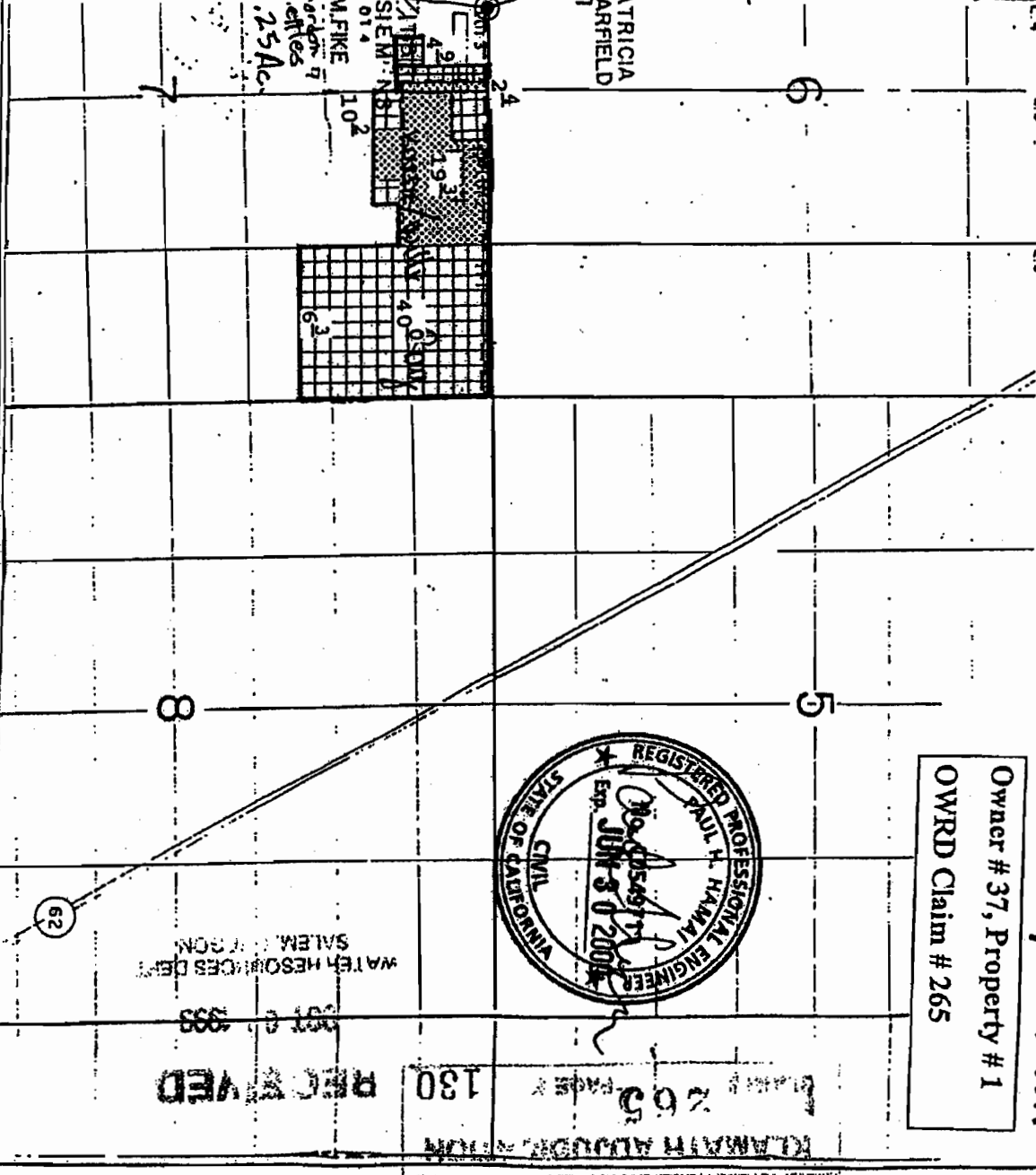


POINT OF DIVERSION
058 FEET WEST
FROM N1/4
CORNER,
SECTION 7,
T35S, R7E, W.M.

PATRICIA
BARFIELD

RECEIVED

- Presently Irrigated Land
- Practicably Irrigable Acreage
- Header Pipe
- Point of Diversion



By: Natural Resources Consulting Engineers Inc.
139 Addison St., Suite 204
Berkeley, Ca. 94702
Netherline (510)841-7814

