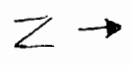
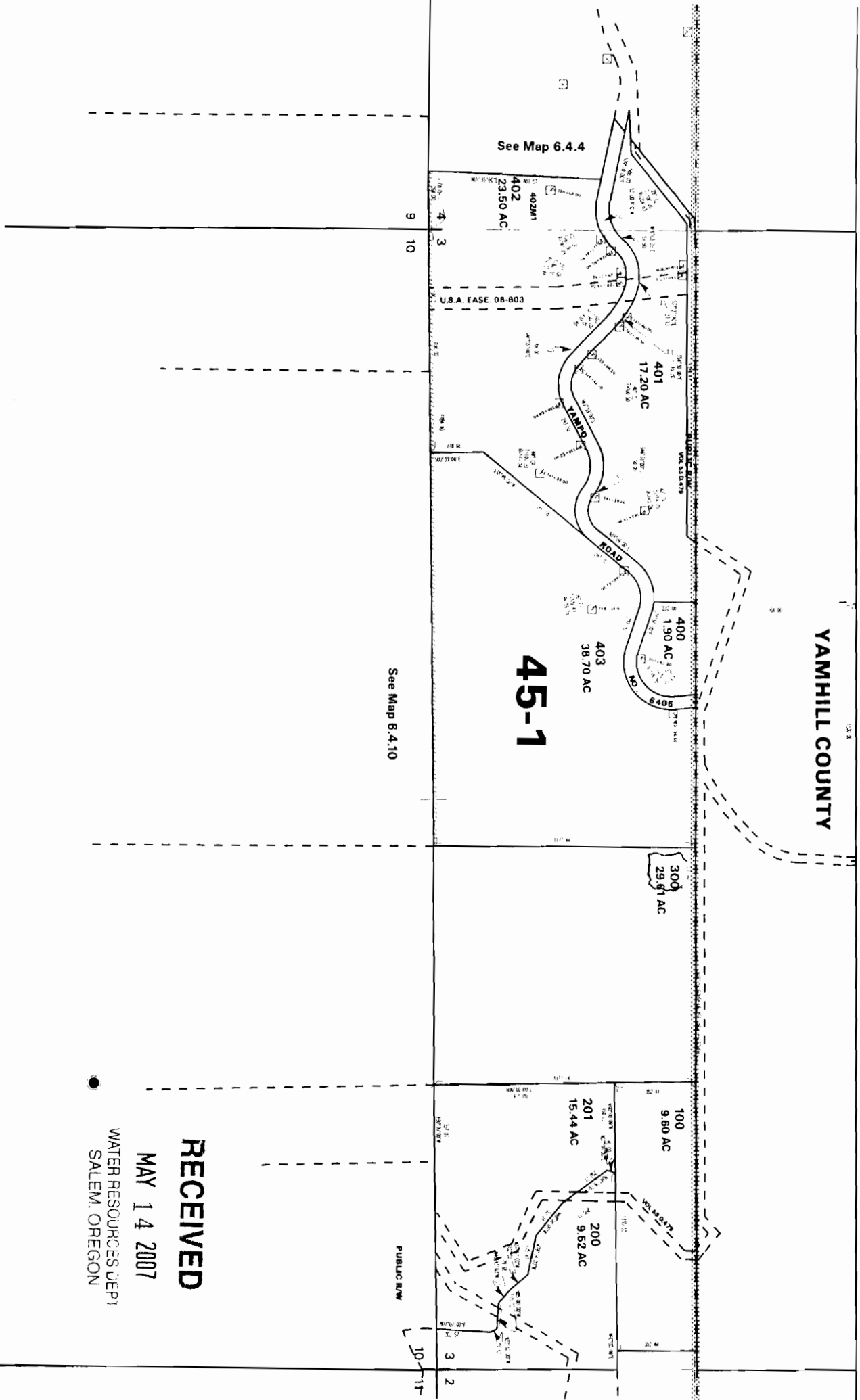


6 south 4 west section 3

1070 feet north & 2300 feet west from SW corner, section 3 -- to center of pond



1" = 600 feet



See Map 6.4.4

See Map 6.4.10

45-1

YAMHILL COUNTY

RECEIVED

MAY 14 2007

WATER RESOURCES DEPT  
SALEM, OREGON