

K 86885

RECEIVED

JUN 01 2007

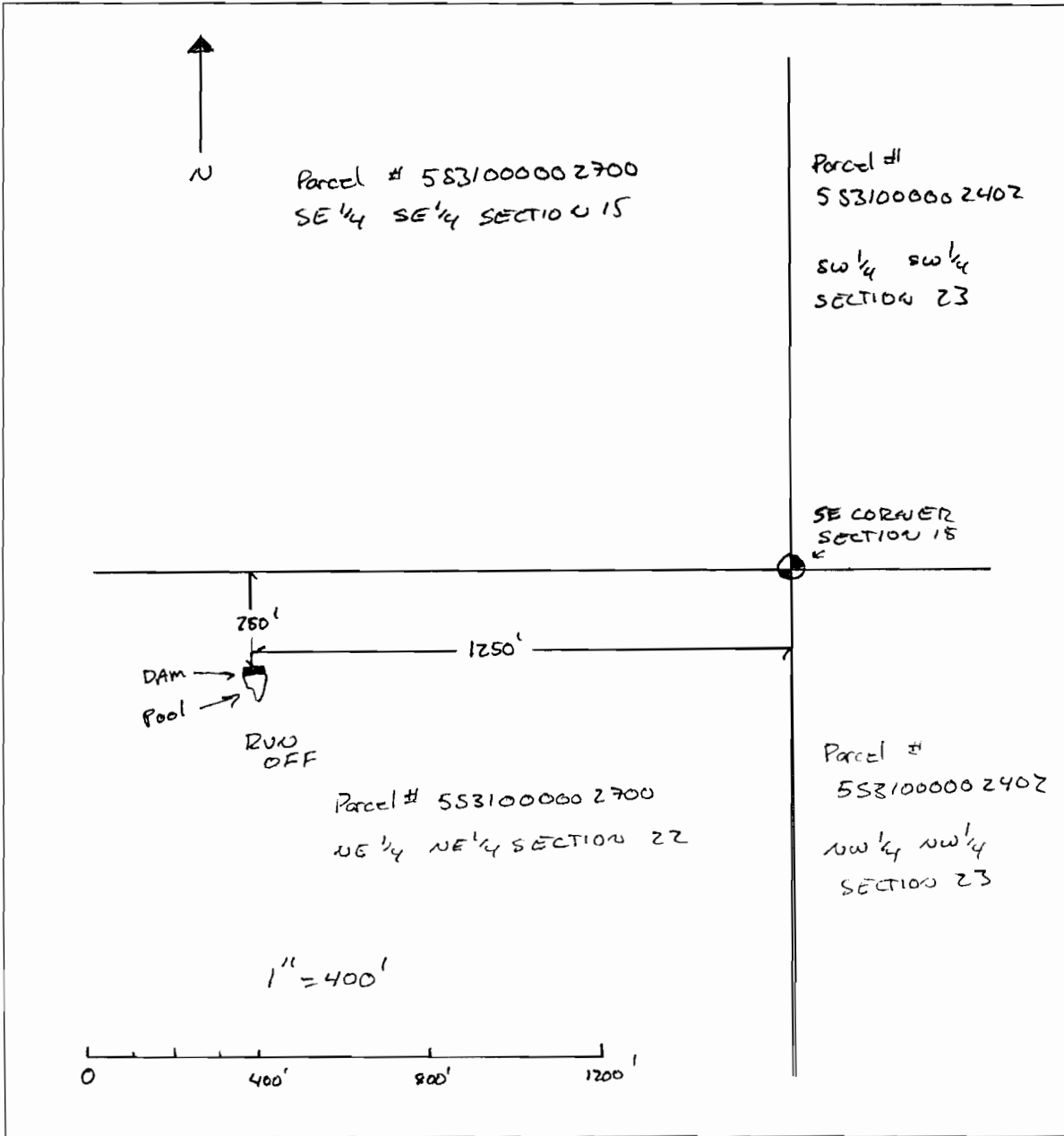
WATER RESOURCES DEPT  
SALEM, OREGON

# Alternate Review Application Map

T5S, R31E T5S, R31E, Sec. 22

Tax Lot 5S31000002700

Umatilla County, Ore



RECEIVED  
OVER THE COUNTER

corrected copy (veterance corner).

R 86885

RECEIVED

JUN 01 2007

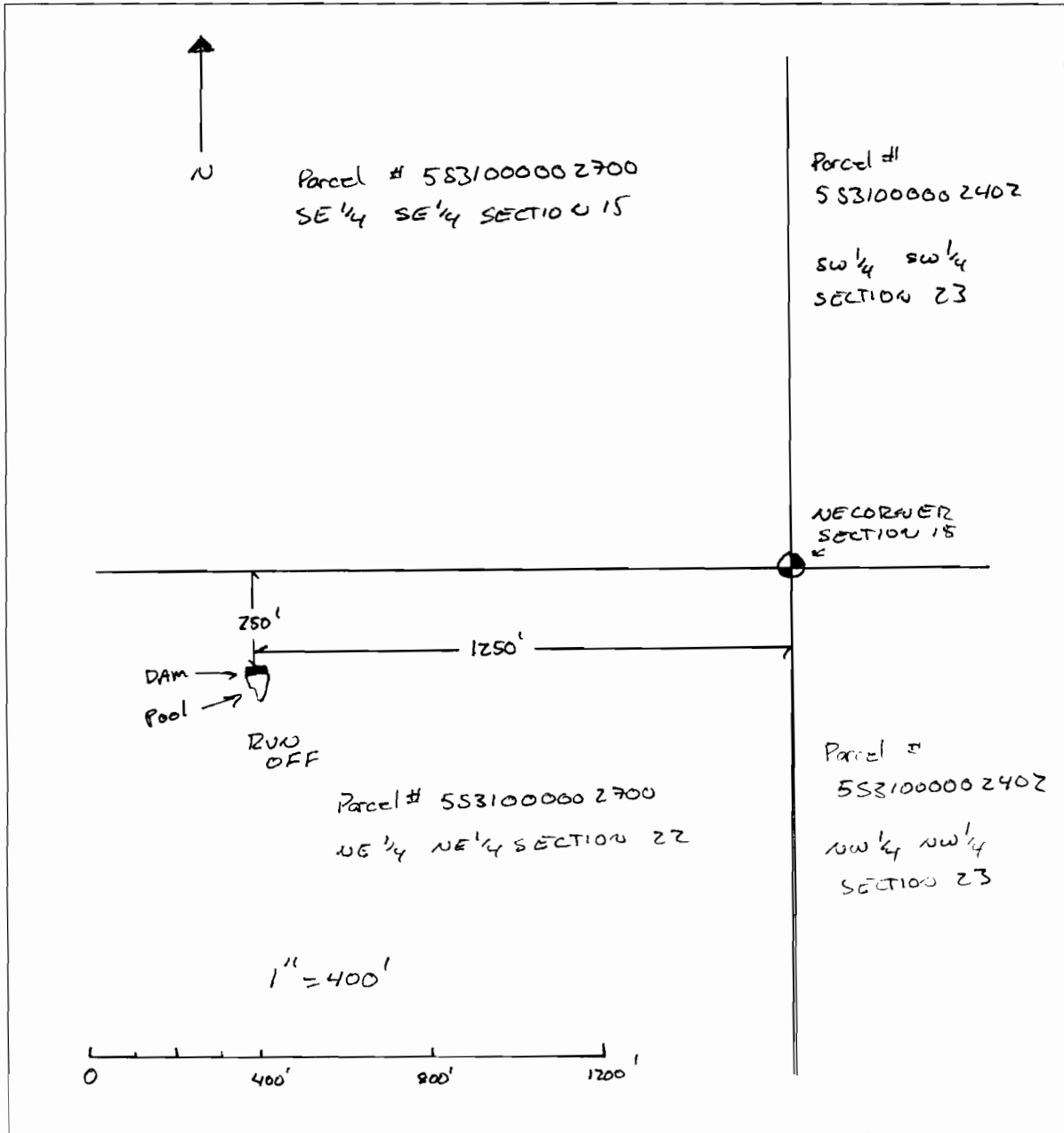
WATER RESOURCES DEPT  
SALEM, OREGON

# Alternate Review Application Map

T5S, R31E T5S, R31E, Sec. 22

Tax Lot 5S31000002700

Umatilla County, Ore



RECEIVED  
OVER THE COUNTER