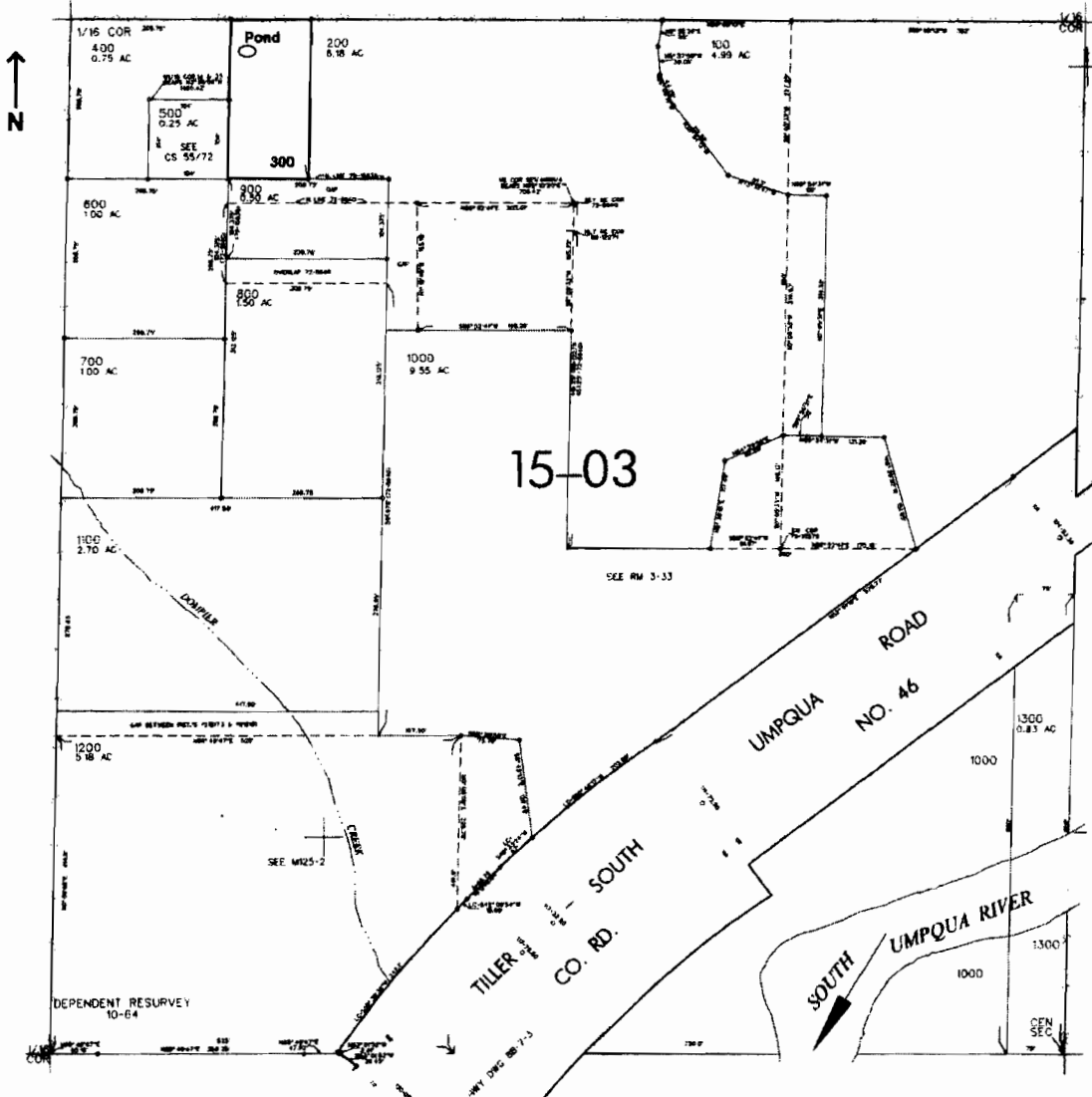


SE1/4 NW1/4 SEC. 23 T.30S. R. 2W W.M.
DOUGLAS COUNTY

Scale: 1" = 250'



Pond is located 40 ft. S. and 230 ft. E. from the NW corner of the SENW of Sec. 23

RECEIVED

MAY 23 2007

WATER RESOURCES DEPT
SALEM, OREGON