

Zenith pond is 1.625 feet south and 250 feet west of the quarter section monument between section 23 and 26

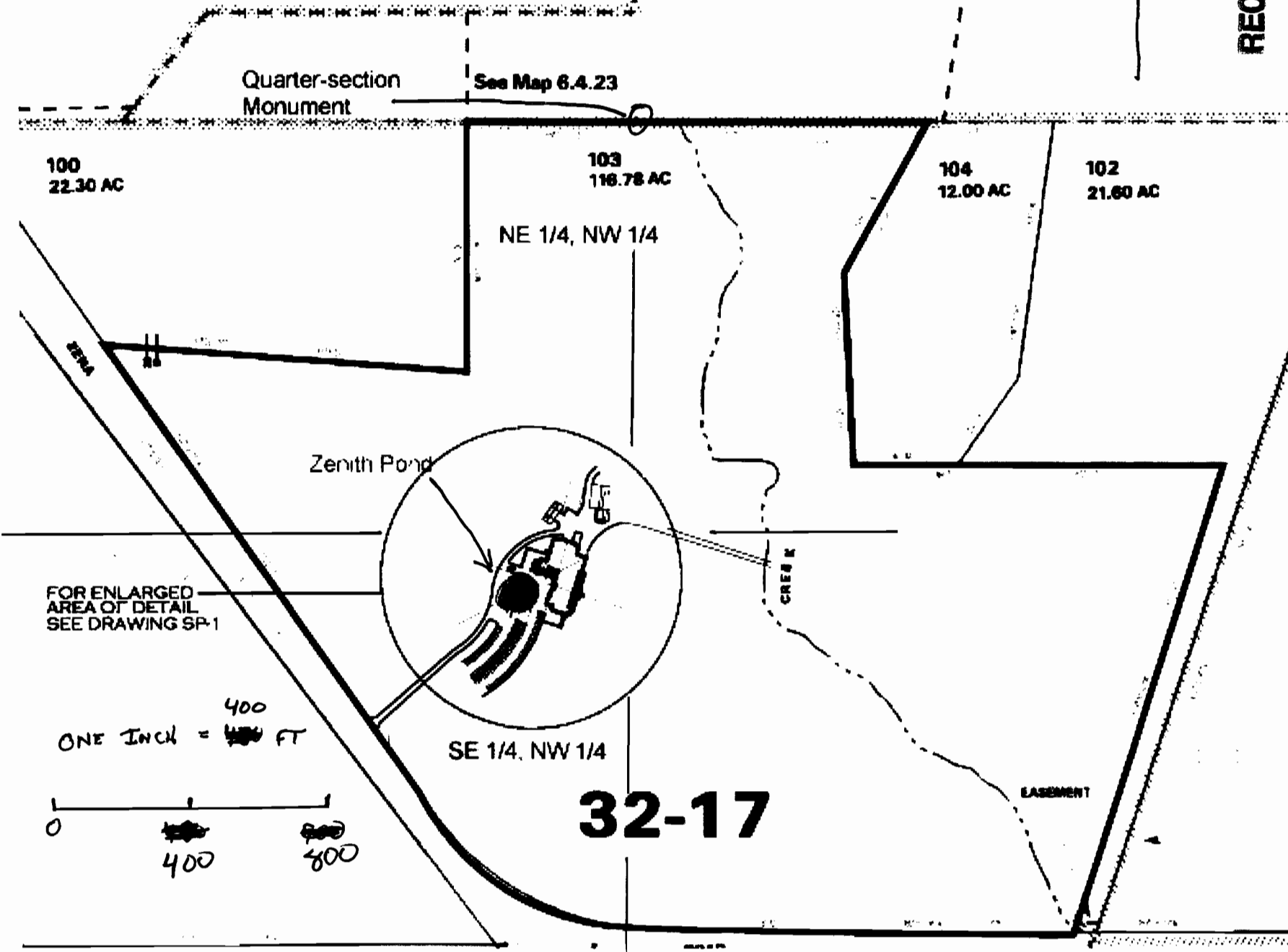
# SEC. 26 T6S R4W WM POLK COUNTY



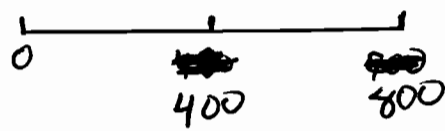
**RECEIVED**

SEP 25 2007

WATER RESOURCES DEPT  
SALEM, OREGON



ONE INCH = 400 FT



v-8692

12-86952

**IMPORTANT**  
This Map for Assessment  
and Taxation Purposes  
**ONLY**

**SEC.26 T6S R4W WM  
POLK COUNTY**  
Scale 1" = 400'

6.4.26

See Map 6.4.23

N.W. CORNER  
JOHN PHILLIPS  
D.L.C. NO. 90

22 23

27 26

23 24

26 25

200  
74.77 AC

100  
22.30 AC

103  
116.78 AC

104  
12.00 AC

102  
21.80 AC

101  
65.32 AC  
PARCEL 1

LOT 1  
11.44 AC

Canceled No.  
201  
301

**32-17**

105  
3.45 AC  
PARCEL 2

LOT 2  
11.44 AC

See Map 6.4.25

See Map 6.4.27

300  
159.24 AC

302  
0.76 AC

400  
23.57 AC

501  
76.77 AC

500  
6.06 AC

401  
56.43 AC

LOT 3  
11.44 AC

LOT 3  
38.97 AC

LOT 2  
26.92 AC

LOT 1  
26.92 AC

LOT 4  
7.30 AC

N.W. CORNER  
ELIAS ROWNS  
D.L.C. NO. 49  
See Map 6.4.35

S.W. CORNER  
JOHN PHILLIPS  
D.L.C. NO. 90

27 26

34 35

28 25

36 36

08/02/06

6.4.26