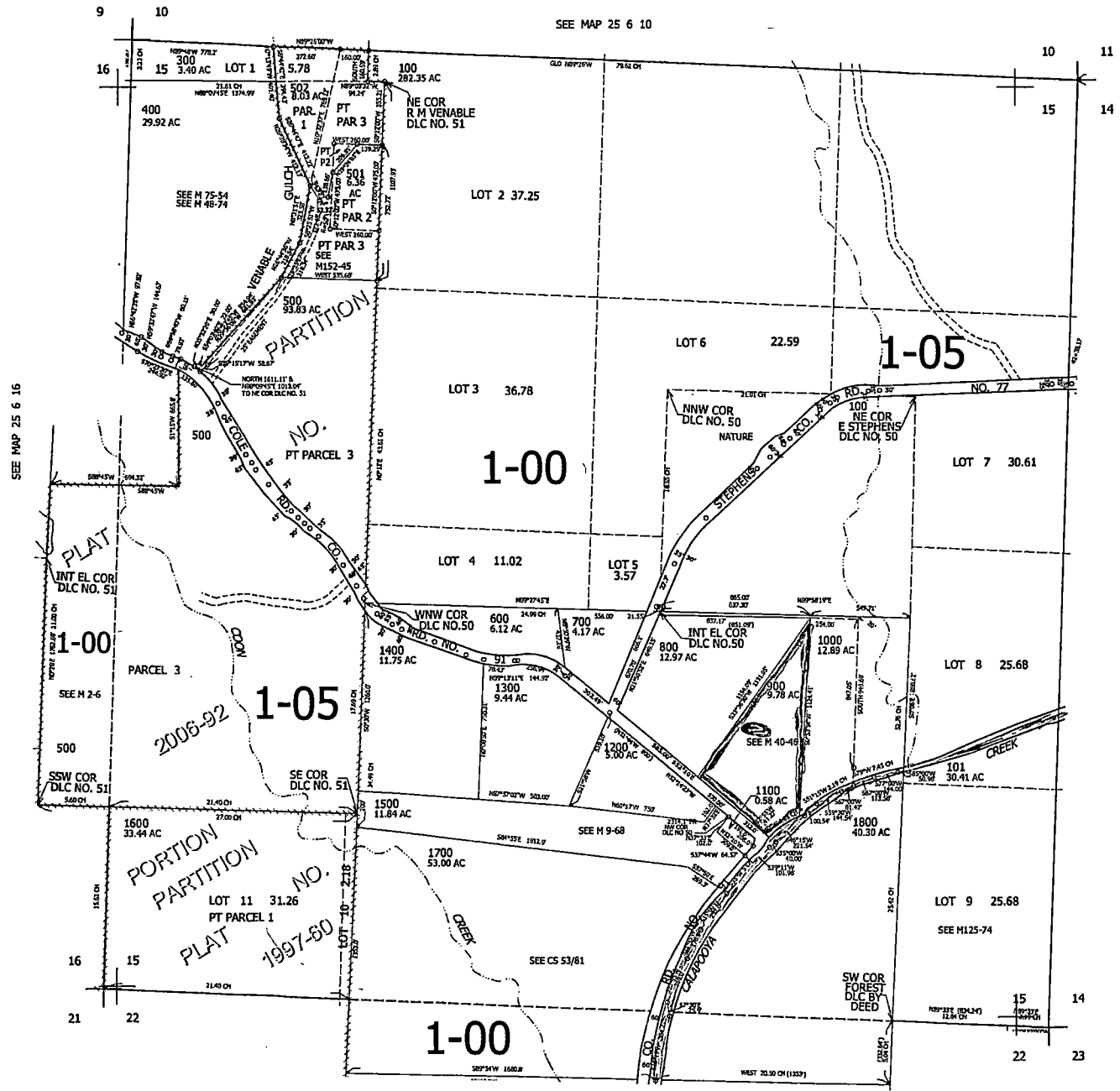


THIS MAP WAS PREPARED FOR ASSESSMENT PURPOSE ONLY.

SEC.15 T.25S. R.6W. W.M. DOUGLAS COUNTY 1" = 400'

REVISED ON 4-30-07

25 6 15



CANCELLED NOS 300M1 400M1 400M2 500M1 201 200 503 504 505 506

SEE MAP 25 6 16

SEE MAP 25 6 14

RECEIVED

DEC 13 2007

WATER RESOURCES DEPT SALEM, OREGON

App No R87054

SEE MAP 25 6 22

4,154,000

641,000

25 6 15